

PLATE 1

BEDROCK SURFACE MAP OF THE
HOMER, OHIO QUADRANGLE

GEOLOGY BY
JEFFRY C. KONKLER
1985

EXPLANATION

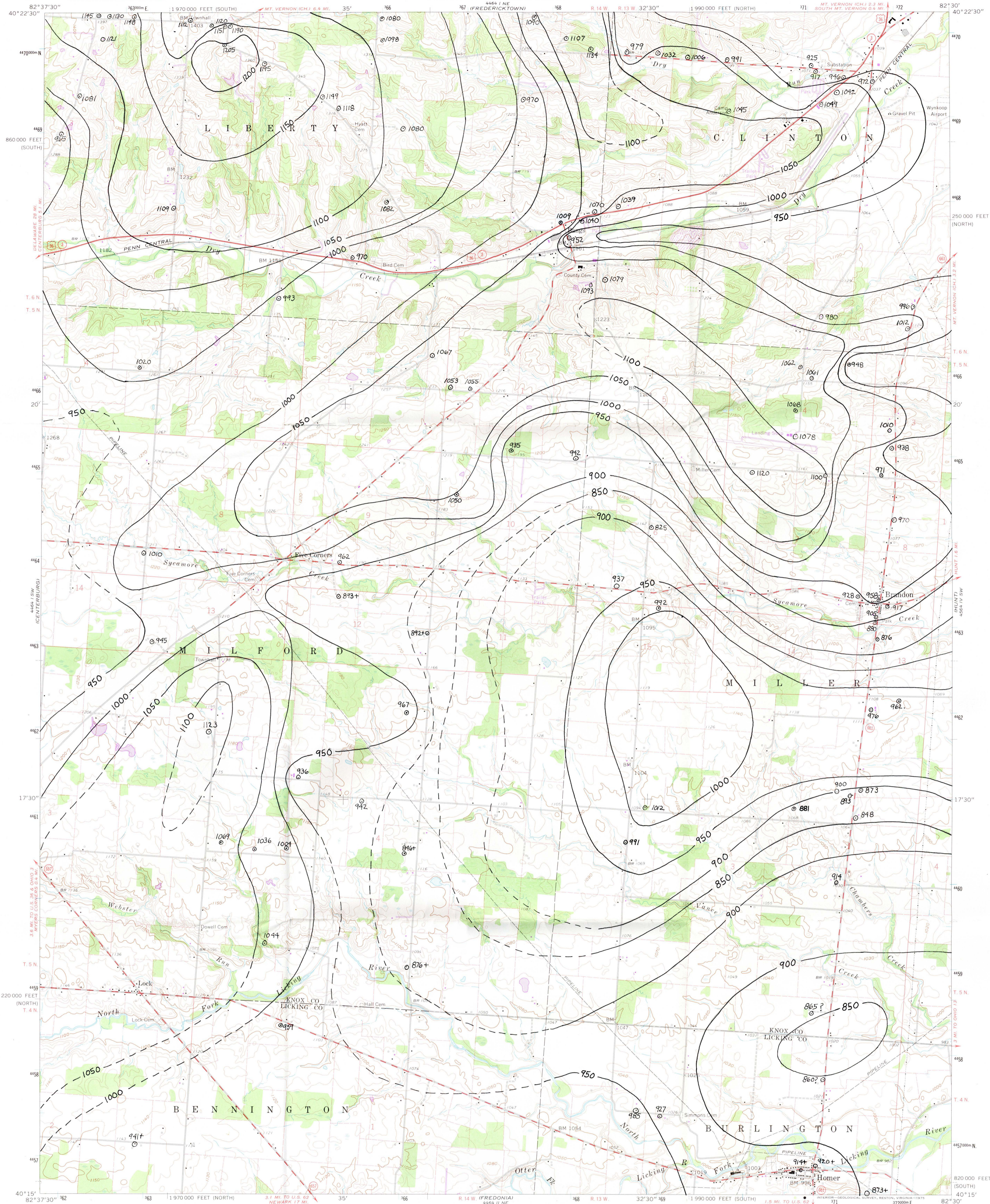
CONTOURS ON BEDROCK SURFACE (CONTOUR INTERVAL
50 FEET)

 900 — DEFINED
 900 - - - UNCERTAIN

CONTROL POINTS*

⊙ 925 ELEVATION OF BEDROCK SURFACE IN FEET

*All control points obtained from water well logs at the Ohio Department of Natural Resources, Division of Water.



Mapped, edited, and published by the Geological Survey

Control by USGS and NOS/NOAA

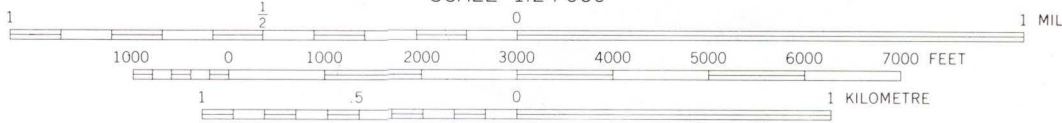
Topography by photogrammetric methods from aerial photographs taken 1959-60. Field checked 1960-61

Polyconic projection 1927 North American datum 10,000-foot grids based on Ohio coordinate system, north and south zones 1000metre Universal Transverse Mercator grid ticks, zone 17, shown in blue

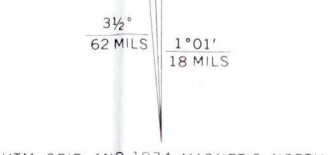
Entire area lies within the United States Military District Land lines based on the Base Line of the United States Military District

Fine red dashed lines indicate selected fence and field lines where generally visible on aerial photographs. This information is unchecked

SCALE 1:24 000



CONTOUR INTERVAL 10 FEET
NATIONAL GEODETIC VERTICAL DATUM OF 1929



THIS MAP COMPLIES WITH NATIONAL MAP ACCURACY STANDARDS FOR SALE BY U.S. GEOLOGICAL SURVEY RESTON VIRGINIA 22092 A FOLDER DESCRIBING TOPOGRAPHIC MAPS AND SYMBOLS IS AVAILABLE ON REQUEST

Revisions shown in purple compiled in cooperation with State of Ohio agencies from aerial photographs taken 1974. This information not field checked.

ROAD CLASSIFICATION	
Heavy-duty	Light-duty
Medium-duty	Unimproved dirt
U.S. Route	State Route



HOMER, OHIO

N4015-W8230/7.5

1961

PHOTOREVISED 1974
AMS 4464 I SE-SERIES V852