

The Knowledge Bank at The Ohio State University
Ohio State Engineer

Title: Front Matter

Issue Date: Jan-1927

Publisher: Ohio State University, College of Engineering

Citation: Ohio State Engineer, vol. 10, no. 2 (January, 1927), 1-3.

URI: <http://hdl.handle.net/1811/33848>

Appears in Collections: [Ohio State Engineer: Volume 10, no. 2 \(January, 1927\)](#)

32

OHIO STATE UNIVERSITY
BROWN HALL LIBRARY. JAN 19 1927

THE OHIO STATE ENGINEER



See page 22

Member of
ENGINEERING COLLEGE MAGAZINES ASSOCIATED

Vol 10 # 2

January, 1927

C. E. Sherman

*TA
1
036
v. 10, no. 2
Jan. 1927
copy 3*

昇
降
機

Лифт

Ascenseur

Ascensor

Ascensore

Ascensor

Elevador

Lift

Elevator

OTIS

The above are reproductions of the Japanese, Russian, French, Spanish, Italian, German, Portuguese, English, American and universal equivalents for elevators.

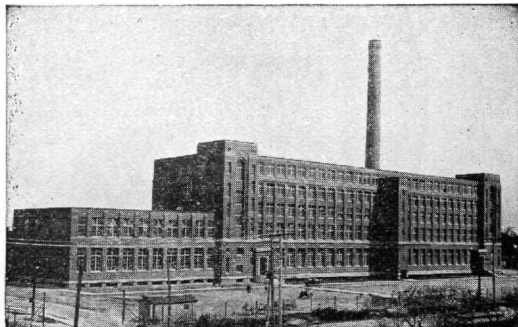
*On sea or on land, at home or abroad,
the single word OTIS is sufficient.*



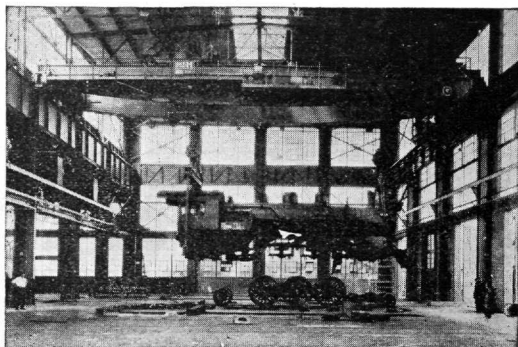
O T I S E L E V A T O R C O M P A N Y

Offices in all Principal Cities of the World

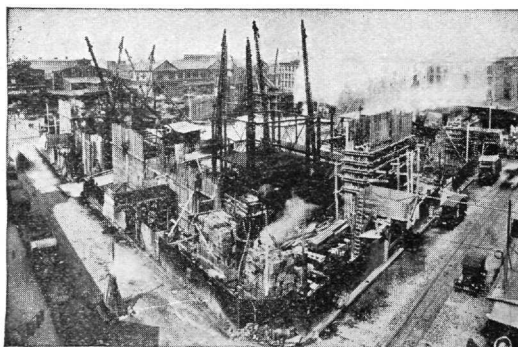
"From Turret to Foundation Stone"



Complete design and construction of all types of structures are included in the service offered by The Foundation Company. Efficient production in industry is dependent upon scientific design of plant;— and initial cost of plant is dependent upon economical, rapid and skillful construction.



Modern factory buildings must contain every facility to meet the demand for effective mechanical operation, and for consideration of the human operator. The mill built for Courtaulds, Limited, at Cornwall, Canada, is a model of such factory construction.



The construction of the locomotive erecting shops of the Southern Railway at Atlanta, Georgia, is a notable example of complete service rendered by engineering contractor, working in full cooperation, in both design and construction, with the engineers of the railway company.

Often considerations of location determine a site where construction of the foundations is rendered unusually difficult. The New York Telephone Building, of which Marc Eidlitz & Son, Inc. were General Contractors, was placed where the Hudson River used to flow; yet modern methods permitted The Foundation Company to construct the substructure reaching to rock five stories below surface level.

These are but a few of the types of projects constructed by this organization.

THE FOUNDATION COMPANY

CITY OF NEW YORK

*Office Buildings • Industrial Plants • Warehouses • Railroads and Terminals • Foundations
Underpinning • Filtration and Sewage Plants • Hydro-Electric Developments • Power Houses
Highways • River and Harbor Developments • Bridges and Bridge Piers • Mine Shafts and Tunnels*

ATLANTA
PITTSBURGH
CHICAGO

SAN FRANCISCO
LOS ANGELES
MONTREAL, CANADA

MEXICO CITY
LIMA, PERU
CARTAGENA, COLOMBIA

LONDON, ENGLAND
BRUSSELS, BELGIUM
TOKYO, JAPAN

BUILDERS OF SUPERSTRUCTURES AS WELL AS SUBSTRUCTURES

Koehring Re-mixed Concrete is Dominant Strength concrete

IN addition to the use of proper aggregates, positive control of the thoroughness of mix and the correct amount of water accurately timed, there is finally, an essentially important factor in the production of standardized concrete of Dominant Strength. It is the proper mixing action.

The raw materials—cement, sand, stone and water—must be so combined and mixed that the resultant concrete will be of maximum strength and quality. The drum of the Koehring concrete mixer has been designed to produce a re-mixing action which coats every particle of aggregate thoroughly with cement. Tests have proved that the Koehring five action re-mixing principle accomplishes this most completely.

Koehring supremacy inside the drum goes even further. With the Koehring re-mixing action there is no separation of aggregate according to size—it is uniform to the last shovelful of every batch.

"Concrete—Its Manufacture and Use" is a 210 page treatise on the uses of concrete, including 26 pages of tables of quantities of materials required in concrete paving work. To engineering students, faculty members and others interested we shall gladly send a copy on request.



- (1) Blade cuts through materials with churning action.
- (2) Blade carries materials up, spilling down again against motion of drum.
- (3) Materials hurled across diameter of drum.
- (4) Materials elevated to drum top and cascaded down to reversed discharge chute which (5) with scattering, spraying action, showers materials back to charging side for repeated trips through mixing process.

KOEHRING  **COMPANY**
MILWAUKEE WISCONSIN

Manufacturers of Pavers, Mixers—Gasoline Shovels, Cranes and Draglines



OHIO STATE ENGINEER

Published quarterly by the students in the College of Engineering,
Ohio State University

CONTENTS

Vol. X JANUARY, 1927 No. 2

Cover Drawing—Hoyt Sherman.	4
The Perkins Observatory, by Frank Dickerson, Jr., '27	4
Our Broadcasting Station, by J. E. Anderson, '27 and Edward S. Hecht, '29	6
The Relation of Maps to The Oil and Gas Industry, by Russell C. Newhouse, '29	8
The Financial Aspect of An Engineering Education, by E. E. Kimberley	9
Decimal Points in Slide Rule Computations, by Edward S. Heck	10
Financial Engineering, by T. C. Lloyd	11
Honorary Fraternities	12
Tau Beta Pi	13
Editorials	14
Hall of Fame	15
The Supply and Demand for Engineering Graduates	16
The Metric System, by Brice Reay	16
The Bookshelf Speaks	18
Alumni News	20
Notes of the Campus	22
Cranks and Countershafts	24

MANAGING BOARD

W. G. HARDY '27 Editor	RAY BIRCH '27 Managing Editor	L. P. DOYLE '27 Business Manager
H. W. FORSCHNER Advertising Manager		C. C. KELLER Circulation Manager

BUSINESS STAFF

J. F. GABRIEL, <i>Ass't Business Mgr.</i>	H. M. LEAR, <i>Advertising.</i>
R. V. MUCKLEY, <i>Ass't Advertising Mgr.</i>	W. J. MORLOCK, <i>Advertising.</i>
CARL W. RYAN, <i>Ass't Circulation Mgr.</i>	HAYWARD A. GAY, <i>Circulation.</i>
L. J. DUERR, <i>Circulation.</i>	

EDITORIAL STAFF

FRANK DICKERSON, '27..... <i>Ass't Editor</i>	L. G. STEWART, '28..... <i>Bookshelf</i>
W. H. SCHOTTS, '27..... <i>Ass't Editor</i>	D. B. CHANCELLOR, '30..... <i>Alumni News</i>
W. H. FABER, '28..... <i>Ass't Editor</i>	R. C. NEWHOUSE, '30..... <i>Ass't Alumni News</i>
E. S. HECK, '29..... <i>Campus Notes</i>	B. O. REAY, '30..... <i>Ass't Campus Notes</i>
D. T. JOHNSTONE, '29..... <i>Alumni News</i>	H. S. HOSKINS, '30..... <i>Ass't Campus Notes</i>
J. W. LAYTON, '30..... <i>Ass't Alumni News</i>	

Member of Engineering College Magazines, Associated

PROF. L. F. VAN HAGAN, *Chairman*, University of Wisconsin, Madison, Wisconsin

Armour Engineer	Kansas State Engineer	Purdue Engineering Review
Colorado Engineer	Michiagn Technic	Rose Technic
Cornell Civil Engineer	Minnesota Techno-log	Sibley Journal
Illinois Technograph	Nebraska Blue Print	Tech Engineering News
Iowa Engineer	Ohio State Engineer	Pennsylvania Triangle
Iowa Transit	Penn State Engineer	Virginia Journal of Engineering
Kansas Engineer	Princeton News Letter	Wisconsin Engineer

Roy Barnhill, Inc., 40 East 34th St., New York, Sales Representative

Subscription price, \$1.00 per year, 25c per copy. Checks, money orders, etc., payable to the Ohio State Engineer.

Entered as second-class matter May 15, 1922, at the post office at Columbus, Ohio, under the Act of March, 3, 1879. Acceptance for mailing at special rate of postage provided for in Section 1103, Act of October 3, 1917, authorized December 8, 1922.