

The Knowledge Bank at The Ohio State University
Ohio State Engineer

Title: Front Matter

Issue Date: Apr-1931

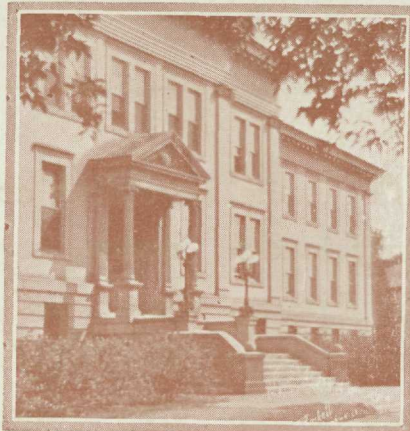
Publisher: Ohio State University, College of Engineering

Citation: Ohio State Engineer, vol. 14, no. 6 (April, 1931), 1-3.

URI: <http://hdl.handle.net/1811/34781>

Appears in Collections: [Ohio State Engineer: Volume 14, no. 6 \(April, 1931\)](#)

The
**Ohio State
Engineer**



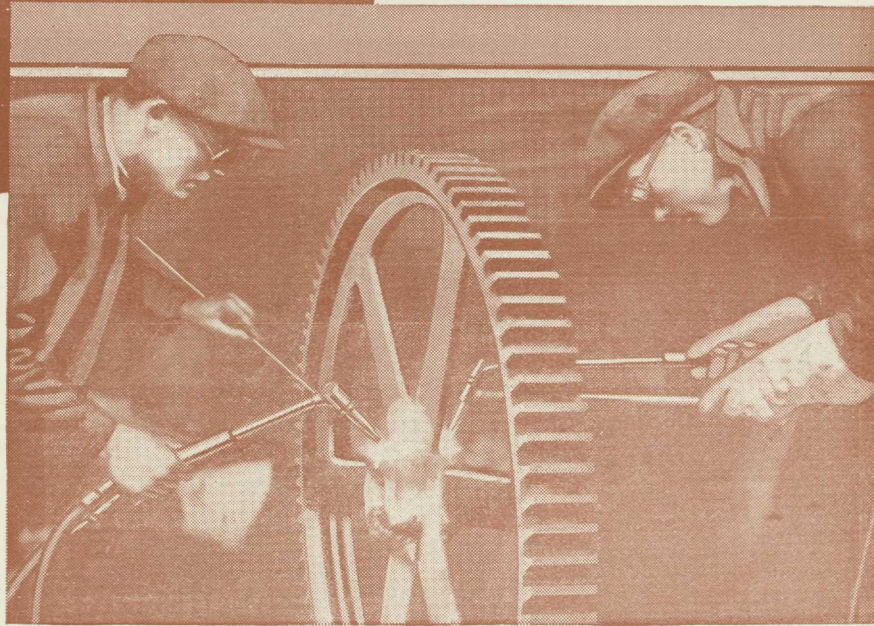
TA
1
036
v. 14, no. 6
Apr. 1931
Copy 3

APRIL 1931

MEMBER OF ENGINEERING COLLEGE MAGAZINES ASSOCIATED

v. 14 # 6

THE FOE OF INDUSTRIAL WASTE ▲▲▲▲▲



MILLIONS of dollars of capital are dissipated yearly in discarded machinery and equipment. This figure would be many times as large but for the use of oxy-acetylene welding in the repair and maintenance of plant machinery. Much more can be saved by still broader application of the oxy-acetylene welding process.

welding and cutting metals has many other interesting applications in the design, construction or fabrication of metal parts or structures. Tomorrow's engineers will be expected to know how to apply this modern metal-working process. Several valuable and interesting technical booklets on design and applications are available. Write us if you are interested.

The oxy-acetylene process of

THE LINDE AIR PRODUCTS COMPANY

Unit of Union Carbide and Carbon Corporation

126 Producing Plants



627 Warehouse Stocks

IN CANADA, DOMINION OXYGEN COMPANY, LTD., TORONTO

26 District Offices

Atlanta	Detroit	New Orleans
Baltimore	El Paso	New York
Birmingham	Houston	Philadelphia
Boston	Kansas City	Pittsburgh
Buffalo	Los Angeles	St. Louis
Chicago	Memphis	Salt Lake City
Cincinnati	Milwaukee	San Francisco
Cleveland	Minneapolis	Seattle
Denver		Tulsa



LINDE OXYGEN • PREST-O-LITE ACETYLENE • OXWELD APPARATUS AND SUPPLIES • UNION CARBIDE

Smith-mixed Concrete

for Milwaukee County Court House



KOEHRING
Pavers, Mixers; Power Shovels,
Pull Shovels, Cranes, Draglines;
Dumpsters.

INSLEY
Excavators; Concrete Placing
Equipment; Cars, Buckets,
Derricks.

T. L. SMITH
Tilting and Non-tilting Mixers,
Pavers, Weigh-Mix.

PARSONS
Trenchers, Backfillers.

C. H. & E.
Portable Saw Rigs, Pumps,
Hoists, Material Elevators,
Ditchers.

KWIK-MIX
Mixers — Concrete, Plaster and
Mortar.

One of the largest county court houses in the United States is nearing completion at Milwaukee, Wisconsin. This new eight million dollar building of classical architecture takes an imposing position on its raised elevation.

General dimensions show a length of 450 feet, a width of 200 feet and a height of 200 feet. In the foundation, 6,700 piles were sunk in order to provide a secure base for the heavy structure. There were 12,000 tons of steel used in the building and the limestone order, which was third largest placed in the United States during 1929, amounted to 303,000 cubic feet. The six columns over the entrance are 7 ft. 6 in. in diameter and are 60 ft. high.

Among the N. E. C. machines used on the Milwaukee County Court House was a large Smith Tilting Mixer of 2 yard capacity. With the famous Smith end-to-center mixing action, the big tilter mixed 10,000 cubic yards of concrete—Smith-mixed concrete for permanence.

"Concrete—Its Manufacture and Use," a complete treatise and handbook on preparing and handling portland cement concrete, will be gladly sent on request to engineering students, faculty members and others interested.



National Equipment Corporation

30th St. & Concordia Ave.
Milwaukee, Wisconsin

Dynamite clears the way for modern engineering wonders!



The river front area of the Repauno dynamite plant near Gibbstown, New Jersey, where the du Pont Company first began manufacturing high explosives

... Can 129 years' experience help YOU?

IN 1802, E. I. du Pont de Nemours, a young French chemist in America, built and began to operate a small powder mill on the banks of the Brandywine River.

Today—after 129 years—the trade-mark of the du Pont Company is well known throughout the industrial world. Du Pont Explosives have played a major part in building the nation's railroads, highways, aqueducts, reservoirs and subways; in clearing millions of acres of land, in mining enormous quantities of coal and other minerals, and in making possible many great engineering enterprises.

Du Pont has never been content merely to *manufacture* explosives. Its highly trained technicians have

spent years in chemical research . . . matching ingredient against ingredient . . . to develop new improvements or to make new explosives that will do a given job better. It is significant that a vast majority of all valuable NEW explosives come from the du Pont plants.

The information that du Pont has gathered in more than a century and a quarter is available to you. As an engineer of today—and tomorrow—you can't afford not to know all there is to know about DYNAMITE.

Write to the du Pont Company for *The Blasters' Handbook*—which tells you how to use explosives. Your free copy is waiting for you.



E. I. DU PONT DE NEMOURS & COMPANY, INC.
Explosives Department • Wilmington, Del.

THE OHIO STATE ENGINEER

Published in October, November, January, February, March, April, and May by the students in the
College of Engineering, The Ohio State University, Columbus, Ohio

Vol. XIV

APRIL, 1931

No. 6

CONTENTS

BROWN HALL.....	Cover
CEMENT MANUFACTURE IN OHIO—By J. WILLIAM LAYTON, E. E. 3.....	4
WHY ONLY AN ENGINEER?—By J. W. SEVERINGHAUS, Arch. 4.....	5
TRAFFIC CONGESTION—A Brief Survey of Its Causes and Remedies.....	6
AUTOMOTIVE DEVELOPMENTS—By HORACE M. MACFARLAND, M. E. 1.....	7
EDITORIALS	8
ALUMNI NEWS.....	10
CAMPUS NOTES.....	11
AROUND THE GUADRANGLE—By MERRILL WEED	12
CRANKS AND COUNTERSHAFTS	16

Subscription price, \$1.00 per year for seven copies; single copies 20¢ each. Make checks and money orders payable to *The Ohio State Engineer*.

Entered as second-class matter May 15, 1922, at the post office at Columbus, Ohio, under the act of March 3, 1879. Acceptance for mailing at special rate of postage provided for in Section 1103, Act of October 3, 1917. Authorized December 8, 1922.

MEMBERS OF THE ENGINEERING COLLEGE MAGAZINES ASSOCIATED

Chairman: Willard V. Merrihue, 1 River Road, Schenectady, New York

The Transit	Wisconsin Engineer
Iowa Engineer	Tech Engineering News
Colorado Engineer	Cornell Civil Engineer
Nebraska Blue Print	Kansas State Engineer
Sibley Journal of Engineering	Princeton E. A. News Letter
Rose Technic	The Technograph
Michigan Technic	Pennsylvania Triangle
The Ohio State Engineer	Kansas Engineer
Penn State Engineer	Oregon State Technical Record
Minnesota Techno-Log	The Purdue Engineer
Armour Institute Engineer	The Auburn Engineer
	The Marquette Engineer