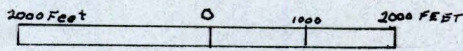
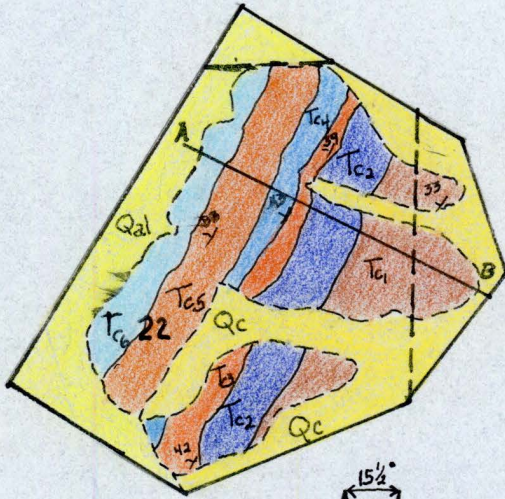


Geologic Map of Portion of Wasatch Monocline

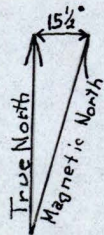
South of the mouth of Ephraim Canyon,
Ephraim, Utah

by
P.S. Fisher 1978

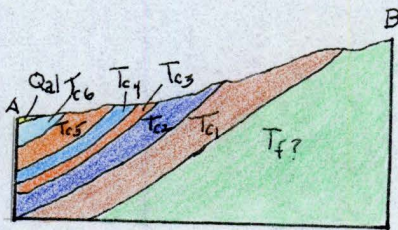
Explanation



Scale 1:24000



Approximate Mean Declination 1978



Quaternary

Tertiary

Colton Formation

Qc

Colluvium

Qal

Alluvium

Tc6

Unit 6

Tc5

Unit 5

Tc4

Unit 4

Tc3

Unit 3

Tc2

Unit 2

Tc1

Unit 1

Tf

Flagstaff Formation

Symbols

↘25

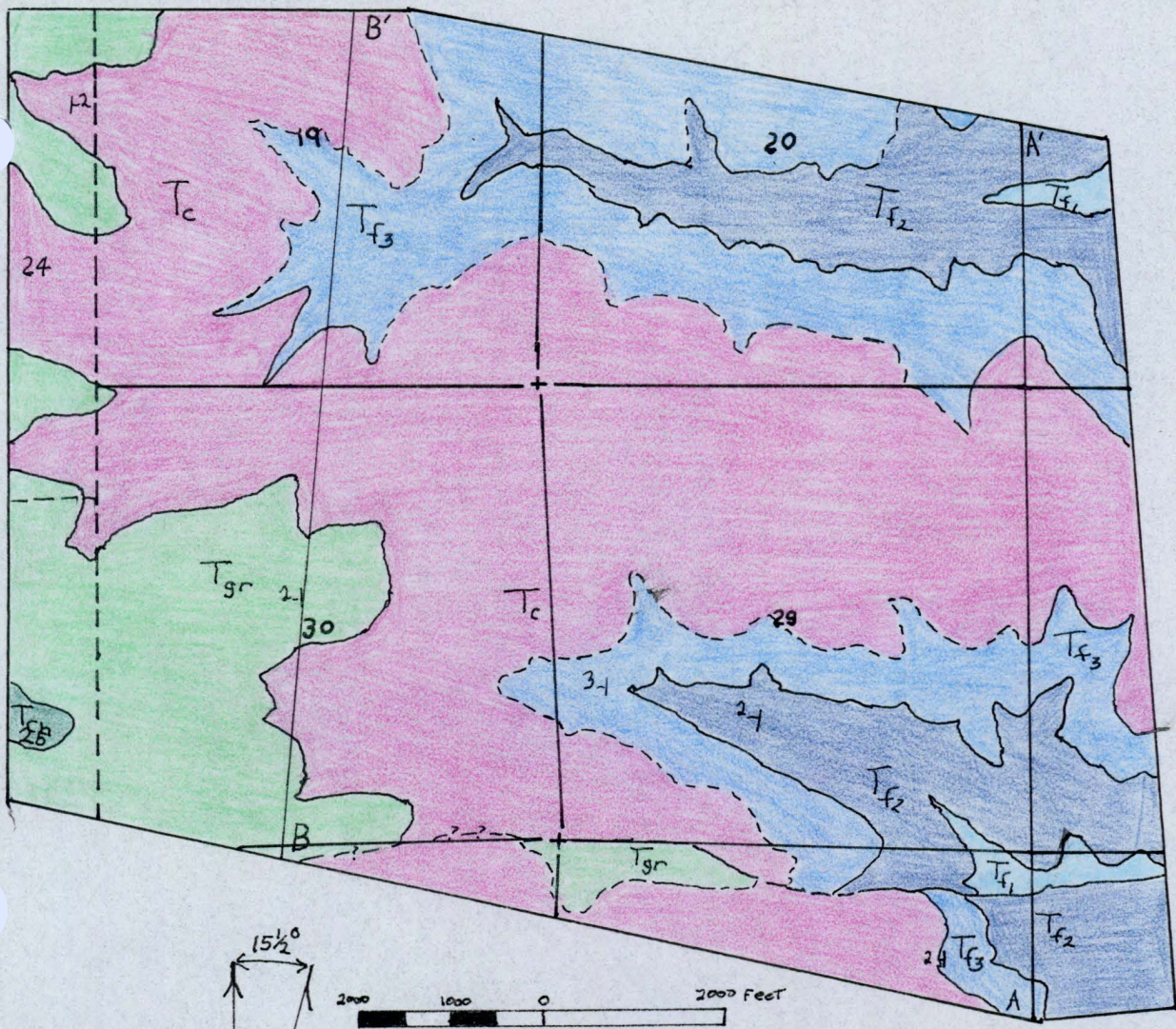
Strike and Dip of Bedding



Fig. 1

System	Formation	Lithology	Thickness (in feet)	Description
Quaternary	Colluvium		Variable	Mostly limestone floats from the Flagstaff Formation at higher elevations.
	Alluvium		Variable	Bedded sand and gravel and cobbles along streams
Tertiary	Colton Formation	T ₆	300	Interbedded buff, white, light gray limestone and green, gray and red mudstone
		T ₅	280	Interbedded brown, medium-coarse grained friable sandstone of quartz, chert, jasper and green, gray and variegated mudstone.
		T ₄	180	White to light-gray limestone with green and gray fissile mudstone.
		T ₃	115	Green-gray mudstone and limestone Fine-grained gray sandstone and red and gray mudstone
		T ₂	295	Medium-grained light-brown sandstone and variegated mudstone Light gray sandstone, fine-grained with red sandstone, micaceous Limestone - mudstone
		T ₁	310	Alternating light gray limestone and green-gray mudstone; the limestone contains fossils. Light-brown mudstone, fissile Light-brown feldspathic sandstone

Fig. 2



Explanation

- f20
Strike and Dip
- Contact, dashed
Where inferred or poorly exposed
- Fault, dashed
where inferred or poorly exposed
- Tch 739
Crazy Hollow Formation
- Tgr 751
Green River Formation
- Tc 743 1/2
Colton Formation
- Tf3 759
Upper Flagstaff Member
- Tf2 741
Middle Flagstaff Member
- Tf1 76 1/2
Lower Flagstaff Member

Tertiary

A Geologic Map of the
Rock Canyon Region, Utah
by
P.S. Fisher 1978

Fig. 3