

THE COMMUNICATOR

Volume 42 Issue 7

November 5, 2001

CAMPUS INFORMATION

Operation Care Package

As a result of the September 11th attacks, many local National Guard units have been mobilized. This includes an estimated twenty OSU and LTC students. They have withdrawn from classes and been deployed throughout the United States.

In an attempt to ease this adjustment, Student Activities is organizing "Operation: Care Package" to collect items and send care packages to our students. Donations can be dropped off in the Student Activities Office (GA 066). We hope that everyone will take advantage of this opportunity to directly affect our own students that have been called in the wake of our nation's tragedy.

Some recommended items include:

- *hand warmers/boot warmers
- *CDs and/or CD players
- *batteries both AA and C
- *letter writing material
- *candy/nonperishable food
- *razors and shaving cream
- *pictures, posters and newspapers
- *phone cards and letters



Please turn in all donated items by November 9th so we will have time to ship them out. Also, if you are aware of other LTC or OSU students that have been deployed, please report their name and address to the Activities Office after asking their permission.

SPORTS

Men's Basketball

Date	Opponents		Time
Nov 8	Indiana Tech	A	7:00
Nov 13	Taylor Ft. Wayne	A	7:30

Women's Basketball

Practice will be held Monday and Thursday at 3:30 and also on Saturdays at 10:00.

CLUBS

Bible Club



Meetings are held every Wednesday at 1:30pm in GA 101. The goal of the club is to teach students about our lord and savior.

Psych Club

The next meeting is Wednesday, November 6, at 12:30pm in Galvin 254.



Medieval Club

The Medieval Club will be holding meetings on the first and third Monday of the month at 7:30pm in PS 212. Garb parties will be held on the last Sunday of the month from 11am-5pm in SCI 170. Come relive the middle ages.



Student Leadership Council

The SLC will be holding weekly meetings throughout the quarter. The meetings are Monday's from 12-1pm in the PS Board Room (214). We hope to see you there!



Chess Club

The Chess Club will be holding weekly meetings on Tuesdays from 6-9pm in the Commons located in the basement of Galvin Hall. Everyone is welcome to come and play (or learn how to play).



Brain teasers

Home

1. Regina left home one afternoon. She turned to the right and started running straight ahead. Then she turned to her left, ran, turned to her left again, ran, turned to her left one more time, and ran even faster. She headed for home. Then she saw a masked boy waiting for her. Who was he?

Coast to Coast



2. Train A and train B are crossing the country, from coast to coast, over 3,000 miles of railroad track. Train A is going from east to west at 80 miles per hour, and Train B is going from west to east at 90 miles per hour. Which train will be closer to the west coast when they meet? (Hint: You don't have to do any math to get the answer. Just use your head!)

Rising Tide

3. The rope ladder of a boat hangs over the side of the boat and just reaches the water. Its rungs are 8 inches apart. How many rungs will be under the water when the tide rises 4 feet?



Name the Dog

4. Once a dog named Nelly lived on a farm. There were three other dogs on the farm. Their names were Blackie, Whitey, and Brownie. What do you think the fourth dog's name was?



Answers on page three

Student Activities Survey Winter Dance Input



Are you interested in a winter dance?
Yes / No

If yes would you like it to be
formal / informal?

Which day would work best for you?
Friday or Saturday

Would you like to help by being involved or
planning? Yes / No

Please give your email if you would like to
help.

Please cut this out and return it to the Student
Activities office no later than November 16.
GA 066

Opportunities

On The Road Again

Join the Student Activities Office as we make scheduled trips to conferences, lectures and other interesting campus related events.

Who: Any OSU or LTC students

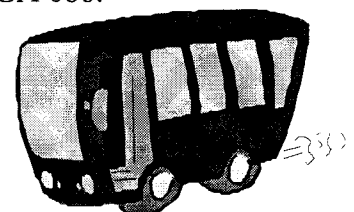
What: Selected topics, if you know of an interesting speaker, please let us know!

Where: Area Campuses, usually OSU main campus

When: Times will be posted at posting sites and in the Communicator.

How: We will travel on the pinnacle of luxury, the Honors Bus, AKA the "Happy Bus"

Why: To enjoy an educational experience, to meet new people and build friendships with people from the Lima Campus. If you are interested in taking a road trip, please stop by the Student Activities office in GA 066.



Past events

Follow up from the Halloween Party

Many costume-clad kids enjoyed painting pumpkins, playing games, and participating in contests. The goolish happenings in the gam room produced many screams from both young and old.

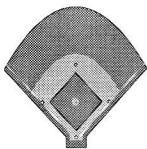
A special thank you to those students who volunteered to be monsters and contributed to the food table. Thank you to all that helped.



Winner of movie tickets for "Find the Bat" was Erin McVicker

Answers to Brain Teasers

1. The masked boy was the catcher. Regina played on a coed baseball team.
STRATEGY: Draw a picture or diagram.



2. When the trains meet, they will be at exactly the same point. Therefore, they will each be the same distance from the west coast.



3. When the tide rises 4 feet, the boat and its ladder will also rise. So no rungs will be under the water.



4. Nelly.



Congratulations!!!!

Congratulations to Ida Abdalkhani for winning Homecoming Queen. Ida is the youngest winner and the first ever Queen to come from Lima. Both of her proud parents are part of the OSU-Lima faculty. The students, staff and faculty are very proud for you.



Upcoming Events

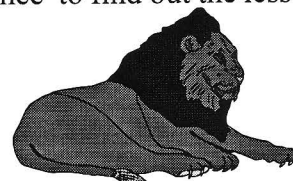
Androcles and the Lion

The Theater Department will be performing the production of *Androcles and the Lion* for the public on Nov. 17th at 7:30pm and Nov. 18th at 2:00pm.

The cost of tickets are:

Non students	\$5.00
Students:	\$4.00
Children and seniors:	\$3.00

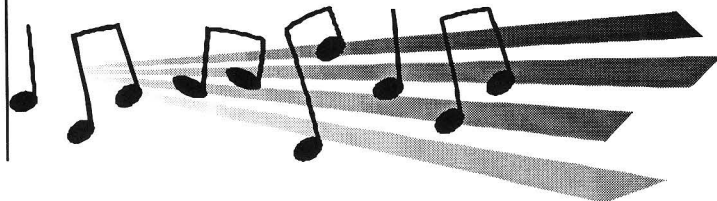
Androcles and the Lion, based on the original Aesop fable, is filled with comedy, friendship and warmth. As with all fables, there is a moral to be learned. Come see this performance to find out the lesson of this fable.



Chorus

The University Chorus will perform
Thursday
November 29, 2001, at 8:00p.m.
in the Reed Hall Auditorium.

The performance is free and open to the public.



November 2001

Sun 4	
Mon 5	Medieval Club meeting @ 7:30 in PS 212 Student Leadership Committee meeting @ 12:00 in PS Board Room Buckeye Ag Society meeting @ 12:00 in GA 101 Menu: Cook's Choice
Tue 6	Psych Club Meeting @ 12:30 in GA 254 Chess Club Meeting @ 6-9 PM in the Commons Menu: Meat Loaf w/Mashed Potatoes, Vegetable & Roll \$4.65
Wed 7	Bible Club Meeting @ 1:30 in GA 101 Menu: Taco Bar/Potato Bar .30 an ounce
Thu 8	Men's Basketball game @ Indiana Tech tip off at 7:00 Menu: Wing Dings, Cole Slaw & Fries \$4.95
Fri 9	Last day to turn in items for the Care Package!! (in Galvin 066) Menu: Shrimp Basket w/Fries & Cole Slaw \$3.70
Sat 10	