
A NEW YUCCA-INHABITING *ACMAEODERA*
FROM ARIZONA
(COLEOPTERA: BUPRESTIDAE)

JOSEF N. KNULL

Department of Zoology and Entomology, The Ohio State University, Columbus 10

The following species, which closely resembles *Acmaeodera subballeata* Lec. in color pattern, was found to be undescribed.

***Acmaeodera yuccavora* sp. n.**

Male.—Form and size of *A. parkeri* Caz. (1940); dark-shining bronze on both surfaces; each elytron containing four irregular transverse yellow markings, one back of base, one at middle, an oblique one on apical half which is joined at side to a short one near apex.

Head convex, depressed on front; surface with densely placed umbilicate punctures; antennae serrate starting with fifth segment.

Pronotum wider than long, wider at base than at apex, widest back of middle; anterior margin sinuate, median lobe broad; basal margin truncate; sides rounded to back of middle, then broadly rounded to constricted apex; side margins not visible from above; disk convex, a transverse, corrugated band at base, a deep basal depression each side in front of band, a slight basal depression in front of band in scutellar area; surface densely, coarsely punctured in middle, punctures separated by less than their own diameters, toward sides punctures larger, umbilicate, pubescence longer and more evident at sides.

Elytra at widest part slightly narrower than widest part of pronotum; sides rounded back of base, constricted in front of middle, then broadly rounded to rounded apices, side margins serrulate from in front of middle to sutural margin; disk flattened in front, umbone prominent, a transverse basal depression present; surface striately punctured, punctures separated by less than their own diameters, interspaces narrower than punctures of striae, finely uniserrately punctured, a short recurved hair arising from each puncture, third interspace slightly raised from middle to near base.

Prosternal margin retracted from side margin, margin entire. Abdomen beneath densely punctured, punctures separated by more than their own diameters, a short recumbent hair arising from each puncture. Last sternite without carina. Posterior tarsus shorter than half the tibia.

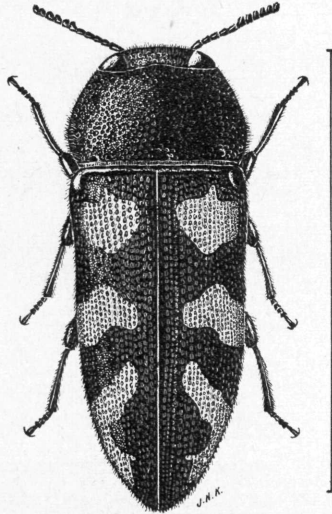
Length 5.3 mm; width 2 mm.

THE OHIO JOURNAL OF SCIENCE 62(1): 2, January, 1962.

Female.—Larger, more rounded apically. Antennae shorter, with outer segments more compact and less serrate.

Holotype male and allotype collected in Chiricahua Mountains, Arizona, 5100 ft, July 29, 1955. Paratypes as follows: reared from dead flower stems of *Yucca* sp., 1949; Aug. 7, 1959, Aug. 2, 10, 1961, all from type locality; in collection of author; Sabino Canyon, Santa Catalina Mountains, Ariz. July 11, 1949. All material collected by D. J. and J. N. Knull. Holotype, allotype and paratypes in collection of author; paratype in Ohio State University collection.

Variations.—Lengths are from 5 to 6.5 mm. The yellow markings vary considerably and on some specimens are connected.



Male *Acmaeodera yuccavora* sp. n.
Line represents 5 mm.

Adults are slow fliers and frequently alight on paths or other bare areas. It has been misidentified as *A. subbalteata* Lec. (1863) which has similar markings; however, it can be separated by the apical crest on last sternite of *subbalteata* Lec. I am indebted to R. E. White for comparing it with the LeConte type. *A. parkeri* Caz. occurs with this species. It can be separated by the carinate third interspace near apex of elytra, and also by markings. In *A. opinabilis* Fall (1899) elytral markings are similar, however the sinuate prosternal margin will separate it. *A. lucana* Van D. (1942) has similar markings; the acute elytral apices will distinguish it.

LITERATURE CITED

- Cazier, Mont A. 1940. New North American *Acmaeodera*, with synonymical and miscellaneous notes. *Wasmann Collector* 4: 17-29.
- Fall, H. C. 1899. Synopsis of the species of *Acmaeodera* of America north of Mexico. *J. N. Y. Entomol. Soc.* 7: 1-36.
- LeConte, J. L. 1863. New species of North American Coleoptera. *Smiths. Misc. Coll.* 167: 1-86.
- Van Dyke, E. C. 1942. Contributions toward a knowledge of the insect fauna of Lower California, *Proc. Calif. Acad. Sci.* 24: 97-131.