

---

STUDIES OF THE *GYPONINAE*  
2. A NEW GENUS—*ZONANA*\*  
(HOMOPTERA: CICADELLIDAE)

DWIGHT M. DELONG AND PAUL H. FREYTAG

*Department of Zoology and Entomology, The Ohio State University, Columbus 10*

A large number of specimens of *Gyponinae* has been made available for study from several sources. While sorting this material a small series of specimens were studied which cannot logically be placed in any known genus. These are being placed in a new genus, *Zonana*, which is closely related to *Dragonana* (Ball, 1935).

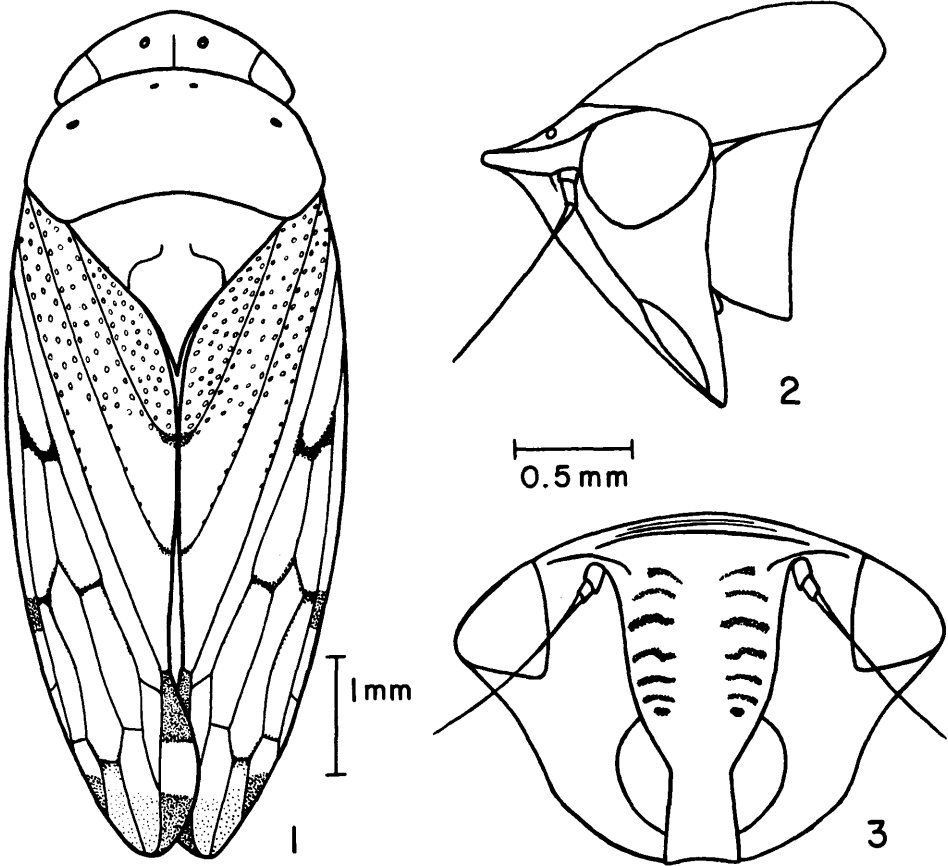
---

\*This work was supported by the National Science Foundation. (Grant NSF-G 9803).

*Zonana* gen. n.

Related to *Dragonana* but with punctures limited to the claval area of the forewings and these without seta. Head narrower than pronotum; crown longer in middle than next to eyes; anterior margin distinct and foliaceous; ocelli closer to median line than to eyes. Pronotum broad, transversely striate, with lateral margins broadly rounded. Forewings with normal venation and a large appendix. Hind tibia without outer secondary setae. Male aedeagus without basal processes.

Type: *Zonana flamma* sp. n.



## ALERA

*Zonana alera* sp. n.

FIGURE 1. Dorsal view.

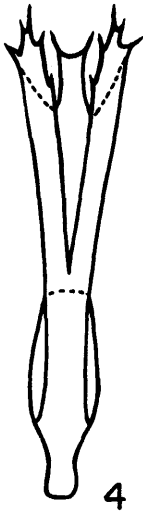
FIGURE 2. Lateral view of head and pronotum.

FIGURE 3. Face. (scale same as fig. 2)

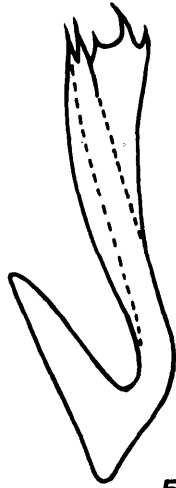
*Zonana flamma* sp. n.

In form and general appearance resembling a *Prairiana* but closely related to *Dragonana*. Length: male 6.5 mm, female 8 mm.

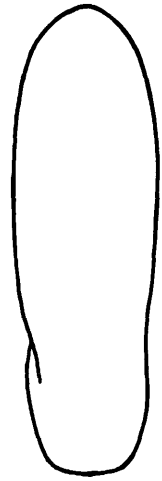
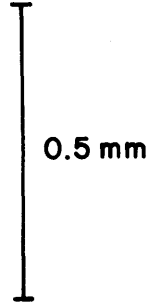
Body short and broad. Head much narrower than pronotum, crown flat, more than twice as wide between eyes at base as median length; margin thin and produced. Pronotum three times as long as head.



4



5

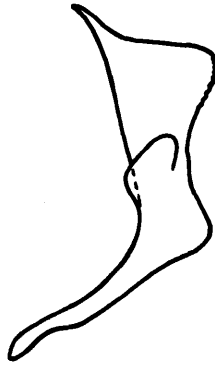


6

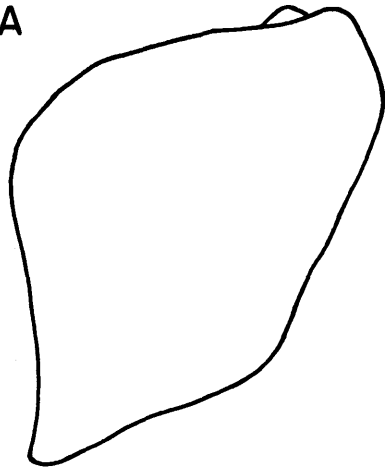
FLAMMA



7



8

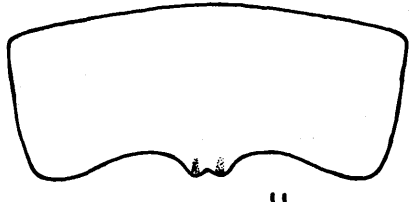


9

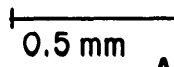


10

FLAMMA



11



ALERA

**Color:** Pale brown variously marked with darker brown. Male with reddish vermiculate markings on crown and anterior portion of pronotum. Wings subhyaline with veins near base and on apical third dark brown. Female with a broad longitudinal band extending from apex of crown to apex of scutellum and a pair of small spots on each side of pronotum behind eyes, forewings usually darker brown posterior to clavus.

**Genitalia:** Female seventh sternum with posterior margin broadly, slightly emarginate either side of a notched, slightly produced median lobe. Male plates about three and one-half times as long as broad, parallel-sided, apex broadly rounded. Styles, in lateral view, constricted at middle, apical portion broadened on ventral margin and rounded, then tapered to a narrow, produced, sharp pointed apex on the dorso-caudal margin. Aedeagus cleft on the ventral side near base of shaft, the two arms diverging, and apex of each terminated with spine-like projections; aedeagal shaft stout and terminating along with ventral arms in spine-like protrusions.

**Holotype male:** Paraiso, C. Z., Panama, 1-7-11, August Busck. **Allotype female:** Gatun Lake, Panama, X-1931, Tres Rios Plantation, T. O. Zackokke, E. P. Van Duzee Collection. **Paratype:** 1 female, same locality as allotype except collected, on 9-6-31. Holotype in U. S. National Museum Collection. Allotype and paratype in California Academy of Science Collection.

#### *Zonana alera* sp. n.

In form and general appearance resembling *flamma* but smaller in size and with a different female seventh sternum. Length: female 7 mm.

Crown about two and one-half times as wide between eyes as median length, broadly rounded.

**Color:** Similar to *flamma*, dull yellow, marked with brown. Pronotum with a few irregular pale spots along the anterior margin. Forewings with a small spot at terminus of each claval vein. A brown spot on anterior portion and beyond middle of costal area and a spot at tip of clavus.

**Genitalia:** Female seventh sternum with prominent lateral angles excavated on each side of a median produced tooth which is bifid at center.

**Holotype female and five paratype females:** San Leidro del General, Costa Rica, D. L. Bounds. Holotype and 3 paratypes in the North Carolina State College Collection. Other paratypes in the DeLong Collection.

#### REFERENCES CITED

- Ball, E. D.** 1935. Some new Gyponas with notes on others. *J. Wash. Acad. Sci.* 25: 503.  
**DeLong, D. M.** 1942. The North American species of the subfamily *Gyponinae* (*Homoptera, Cicadellidae*). The Ohio State University Graduate School Studies—Contributions in Zoology and Entomology No. 5: 109-110.

#### EXPLANATION OF FIGURES 4-11

##### *Zonana flamma* sp. n., male genitalia.

- FIGURE 4. Ventral view of aedeagus.  
 FIGURE 5. Lateral view of aedeagus.  
 FIGURE 6. Ventral view of plate.  
 FIGURE 7. Ventral view of style.  
 FIGURE 8. Lateral view of style.  
 FIGURE 9. Lateral view of pygofer.

All male structures drawn to same scale.

- FIGURE 10. *Zonana flamma* sp. n., female seventh sternum.  
 FIGURE 11. *Zonana alera* sp. n., female seventh sternum.

Both female seventh sterna drawn to the same scale.