

Wiseman Hall

Herrick Archives Number 157

A. IDENTIFICATION & LOCATION

1. Name

1.1 Officially named "Health Center Research Laboratories" by Board of Trustees on January 12, 1959.

1.2 Officially named "Wiseman Hall" by Board of Trustees on September 13, 1963.

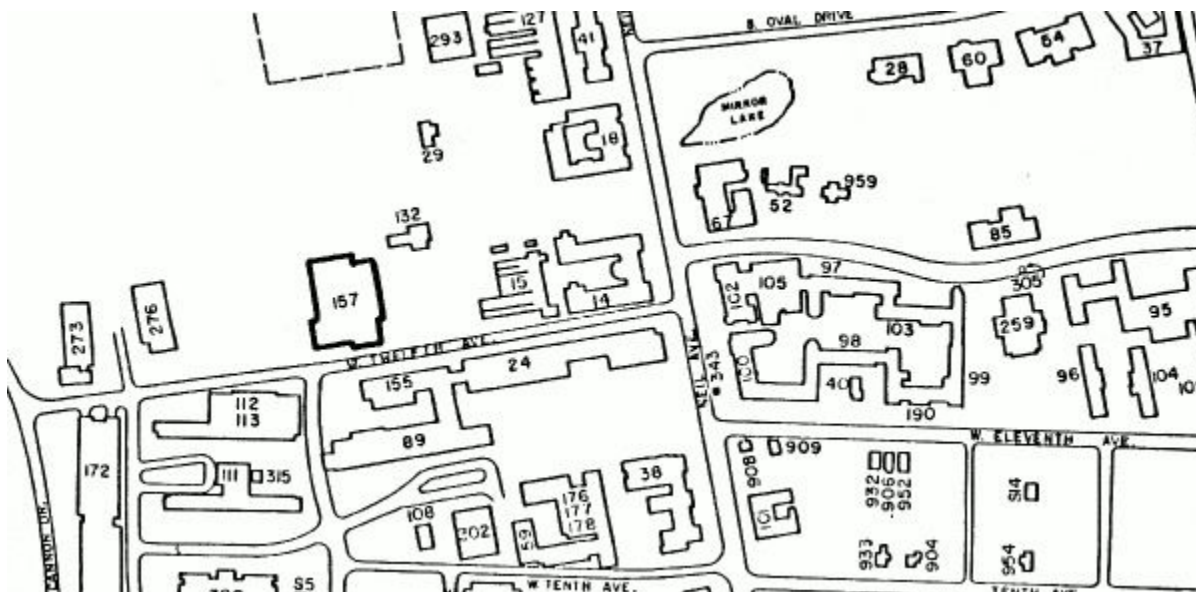
1.3 Alternate names noted:

Animal Research Building
Animal Research Laboratory Building
Animal Research Facility, College of Medicine
Health Center Research Laboratories

2. Location

2.1 Located at 400 West 12th Avenue. See map below.

2.2 For greater detail, see Sheets 108 and 109 In the book of campus maps in the University Archives.



For identification of other buildings shown, see Appendix A.

3. General Description

3.1 Type of construction:

Reinforced concrete frame with brick exterior.

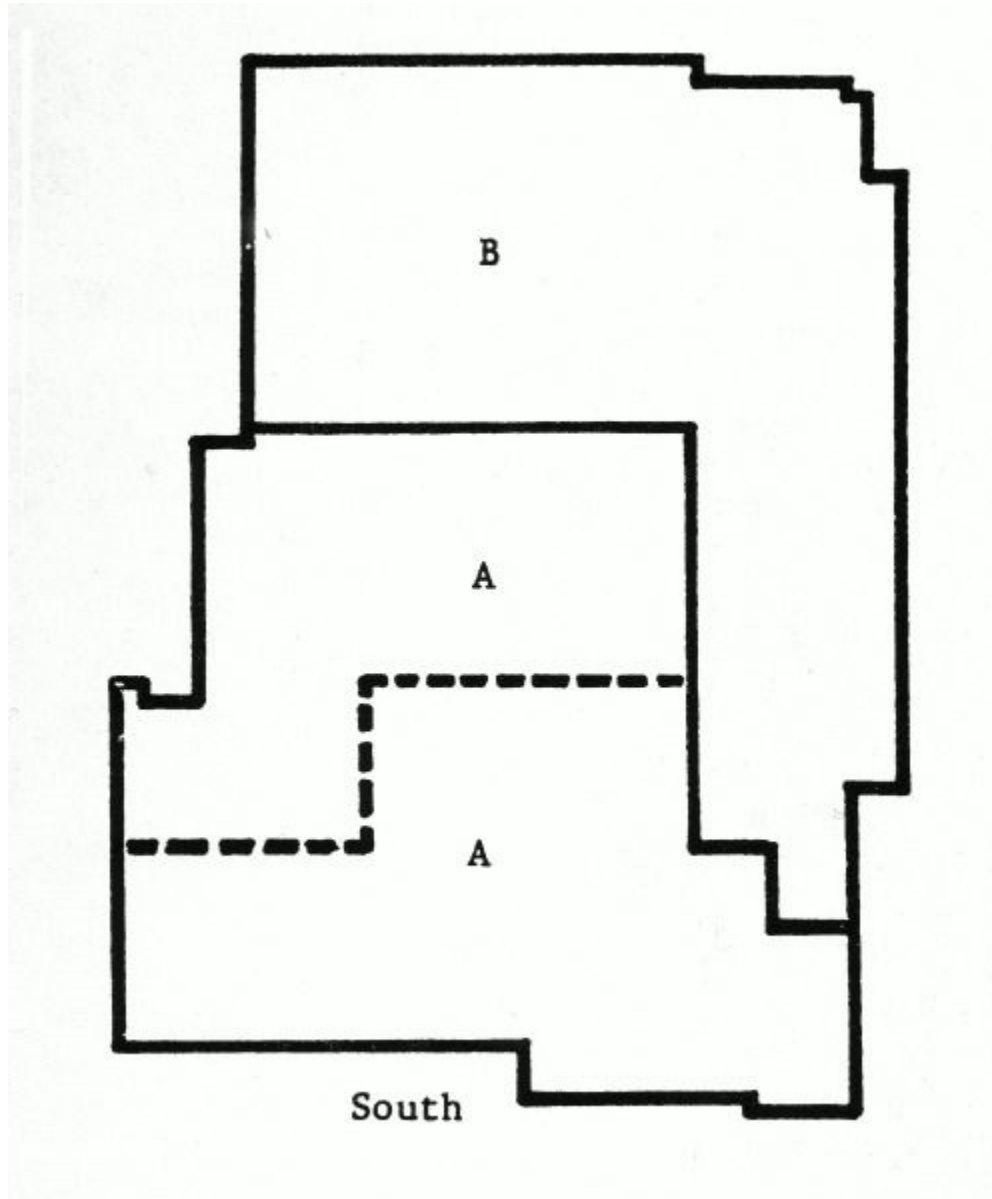
3.2 No of stories:

Two, with no basement.

See Addendum No. 1

3.3 Increments of construction:

Enlarged once -- see sketch.



A-- Original building. Only that part of the 2nd floor below the broken line was included.

B-- Addition. Portion of 2nd floor above the broken line was included.

3.4 Present area of building as shown in inventory records of Division of Campus Planning:

79,842 sq. ft. gross;

47,512 sq. ft. net assignable

See Addendum No. 1

B. PLANNING & CONSTRUCTION - ORIGINAL BUILDING

1. On September 1, 1958 the Board of Trustees approved the plans and related documents prepared by Dan A. Carmichael. The solicitation of bids by contractors had been authorized on July 11, 1958.
2. Bids were received on September 24, 1958 and October 10, 1958 (T).
3. On October 13, 1958 the Board of Trustees awarded contracts to the following contractors:

General: C. C. Vogel
Electrical: Guston Hirsch Organization, Inc.
Heating: Piping Contractors Co.
Plumbing: National Corp.

4. Completion and occupancy:

Records in the University Architect's Office indicate a completion date of February 1, 1960.

C. PLANNING & CONSTRUCTION -- ADDITION

1. On July 14, 1966 the Board of Trustees approved the plans and related documents prepared by Dan A. Carmichael and authorized the solicitation of bids by contractors.
2. Bids were received on August 18, 1966 (T).
3. On September 8, 1966 the Board of Trustees awarded contracts to the following contractors:

General: Baker and Coombs of Ohio, Inc.
Electrical: Mid-City Electric Co.
Heating, ventilating and air conditioning: Limbach Co.
Plumbing: Duckworth Plumbing and Heating Co.

4. Completion and occupancy:

The addition was released for purposes of installation of equipment on September 23, 1968. (P)

All work completed by October 16, 1968, but subject to final checking by Physical Plant. (A)

D. COST

Carried at \$3,031,347.56 as of June 30, 1971 (B).

E. PHOTOGRAPHS

1. In Photoarchives:

X 7940
X 7941
X 7942

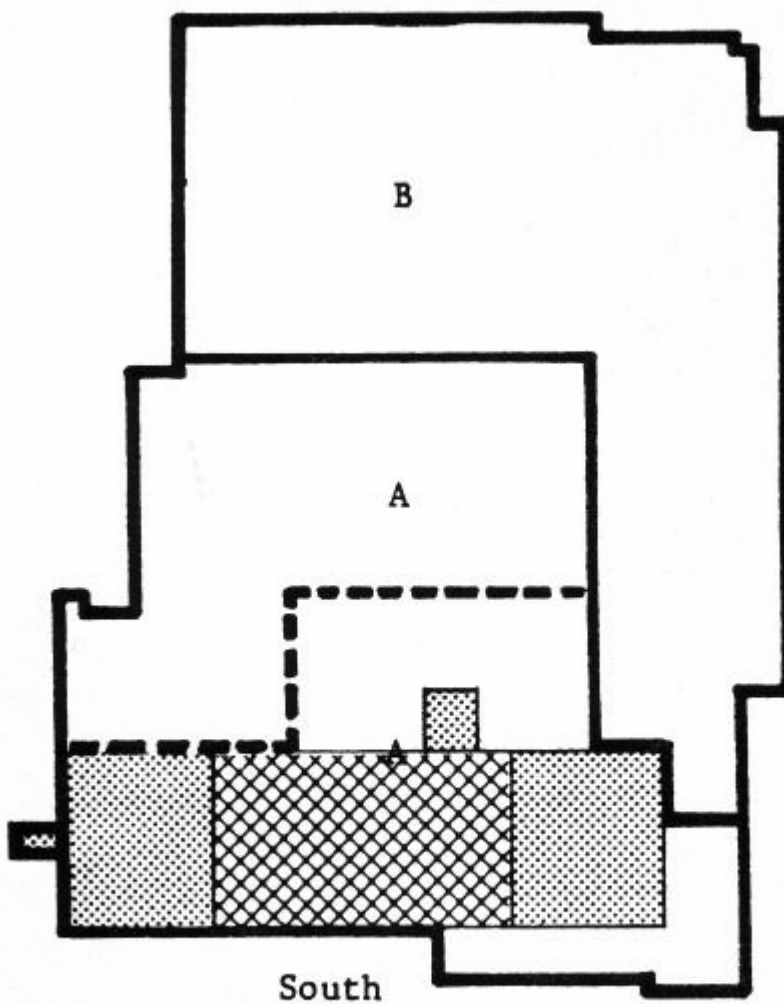
See Addendum No. 3

John H. Herrick
August 5, 1976

ADDENDUM NO. 1

The Board of Trustees on November 3, 1978 approved plans prepared by Dan A. Carmichael for a vertical expansion at the south end of this building to provide a "Cancer Center."

The extent of this addition is represented by the shaded area in the following sketch:



The small projection to the left is an elevator.

The remaining shaded areas include an "interstitial" floor on the roof of the present building (for

mechanical facilities), a third floor, and a fourth floor.

The cross-hatched portion represents a mechanical equipment floor on top of the new fourth floor.

Bids on this project were taken on February 9, 1979 (T).

On February 2, 1979, the following contract awards were reported to the Board of Trustees:

General: The Setterlin Company
Plumbing: Duckworth Plumbing Company, Inc.
Heating, ventilating, and air-conditioning: J.A. Guy, Inc.
Electrical: Electric Power Equipment Company

According to the University Architect's office, the addition is scheduled for completion on July 27, 1980; and the addition has a gross square footage of 23,350.

See Addendum No. 4

John H. Herrick
July 11, 1979

ADDENDUM NO. 2

Inspection of old campus maps reveals the following additional names for this building:

H C Research Lab
Medical Research Lab
Wiseman Lab

John H. Herrick
November 13, 1979

ADDENDUM NO. 3

Photographs X 25037 and X 25038 show the addition under construction as of December 14, 1979.

John H. Herrick
December 28, 1979

ADDENDUM NO. 4

This addition was released for beneficial occupancy on October 8, 1980 (P).

Photographs X 25202 and X 25203 taken July 10, 1980, show the building with the exterior substantially completed.

On October 13, 1980 the office of Campus Planning and Space Utilization announced that the addition would be known as "The Ohio State University Comprehensive Cancer Center."

John H. Herrick
November 17, 1980

ADDENDUM NO. 5

The Office of Campus Planning and Space Utilization records show the Cancer Center as Building 500.

John H. Herrick
September 24, 1981

ADDENDUM NO. 6

Campus Planning records now carry the Cancer Center as Building 363.

Areas shown in current Campus Planning records for this building are as follows:

	Gross Sq. Ft.	Net Assignable Sq. Ft.
Building 157--Wiseman	79,842	44,327
Building 363--Cancer Center	31,794	12,908
TOTAL	111,636	57,235

See Photographs X 30113 & X 30114 for the completed addition.

John H. Herrick
November 16, 1984

ADDENDUM NO. 7

This building is now carried in Campus Planning records as Bruce K. Wiseman Hall. The official name remains "Wiseman Hall."

John H. Herrick
August 26, 1986