



[Complete Archive](#)

"The very idea that there is another idea is something gained."

Richard Jefferies
The Story of My Heart

Contents

| [Calendar](#) | [Announcements](#) | [Library Links](#) |
| [Features](#) | [Meeting Notes](#) | [Human Resources](#) |

See also: [What's New](#) on the Libraries' Homepage.

Send items to green.9@osu.edu by Friday noon for publication the following week.

Calendar of Events [Back to Top](#)

A Shoe for All Seasons: The 25th Anniversary Exhibition

June 10 - August 16, 2002

Cartoon Research Library [More Info](#)

OSU Discount Days at Cedar Point

July 21 - August 3

\$12 off regular admission to Cedar Point [More Info](#)

Ohio Support Staff Institute Closing Session

August 7, 2002 9:00am-11:30am

Ohio Dominican College [More Info](#)

OSU Employees Nights with the Columbus Crew

August 14, 2002 7:30pm

Crew vs. L.A. Galaxy [More Info](#)

OSU Night with the Columbus Blue Jackets

Sunday, September 22, 2002 5:00pm.

Blue Jackets vs. Nashville Predators [More Info](#)

For other University events, see

[OSU Electronic Calendars](#)

[University News Releases](#)

[onCampus](#)

[University Research News](#)

Announcements [Back to Top](#)

Volunteers Needed

Volunteers needed to represent the Libraries on the

WOSU-TV34 August Fund Drive

Saturday, August 10th, 2002

8:00am until 12:00pm

Interested?

Please contact Chiquita Mullins Lee, 2-8999, mullins-lee.1@osu.edu.

A Reminder from Javamaster

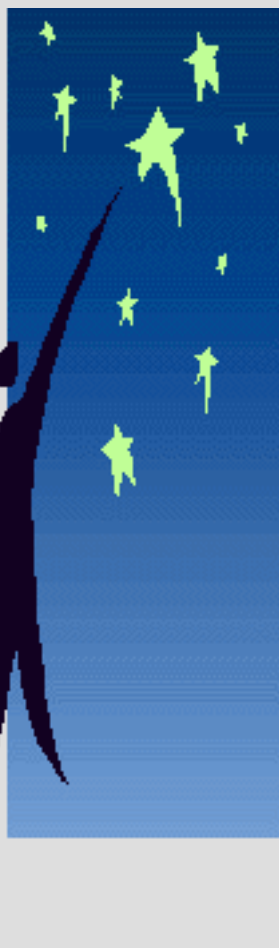
Libraries employees are still eligible for a discount from Javamaster, but please remember to wear your Libraries ID.



Many of the newer Javamaster employees won't know you work in the Libraries and will no longer give discounts unless you have your Libraries ID.

Thanks for your cooperation.

Chiquita Mullins Lee (mullins-lee.1@osu.edu)



Awards, Acknowledgments, Fellowships, Grants, and Publications

Share your good news with the University and the entire community. Please send information about your recent accomplishments to Program Coordinator Chiquita Mullins Lee (Library Communications) at mullins-lee.1@osu.edu.

Libraries' faculty and staff are engaged in exciting work and we want to make it known.

Awards

Achievements



Training Opportunities & Tips

Presented by the OSUL Training Advisory Council

July 30 **Libsoftips**--A listserv called libsoftips was established as a mechanism for exchanging information and problem solving for the software packages generally used in the Libraries. If you're having a problem or know that something should be able to be done by a specific piece of software, but can't figure out exactly how to do it, send your question to [libsoftips](#) and someone more familiar with that software will likely be able to provide the assistance you need. Of equal importance is the opportunity to share with others information about a capability that you've discovered. This listserv hasn't been heavily used, but has the capability to be of significant assistance to all of us in our daily work. A message about Opening Software from the Desktop in Windows 2000 was sent to the listserv on Tuesday, July 30. If you did not receive the message, but would like to receive future messages, please contact [Marilyn Willhoff](#) and ask to be subscribed to the list.

[Training Calendars](#) - Calendars for the current and two future months, showing training opportunities available from the Libraries, the Office of Human Resources, OhioLINK, OHIONET, and the Computer Workshop. **[Alphabetic](#)** and **[Subject Indexes](#)** are also provided.

Send comments and questions to [Training Advisory Council](#)
Visit the [TAC Web site](#).

Library Links [Back to Top](#)

- [OSU Course Catalog & Master Schedule](#)
- [Library Staff Advisory Council's Web Page](#)
- [Library Staff Information Page](#)
- [OhioLINK Reference Databases - Access Rights](#)
- [Electronic Journal Center \(OhioLINK\) - Publisher List](#)

Visiting Japanese Scholar

Mr. Toshiro Takagi has come from Japan to the Ohio State University Libraries as a visiting scholar to conduct research for two years (June 2002 - June 2004). In Japan he holds the position of Deputy Director-General in the Research Planning at the Institute of Developing Economies (IDE), which is part of the Japan External Trade Organization (JETRO). IDE is a semi-official, non-profit institution founded in



L-R: Kazuko Takagi, Maureen Donovan, Toshiro Takagi

1960 to study problems in developing economies. IDE merged with JETRO in 1998 as a part of a Japanese governmental reorganization. JETRO has close ties to Ohio, sending one of its staff members to the State of Ohio's Department of Development on a regular basis.

As a semi-governmental research institute, IDE has responsibilities to the public. IDE has become aware that similar organizations in the United States are involved in document delivery, electronic scholarly journals, publishing research results on web sites, and participating in library consortia for information sharing. In order to continue producing high quality research, receive higher performance assessments, and participate more actively in information sharing, IDE has deployed Mr. Takagi to do research for two years at the Ohio State University Libraries.

Mr. Takagi's assigned research project is in the area of library services. In particular he will be concentrating on the following research topics:

1. Research/study of Information and Communication Technology (ICT)
 1. Document delivery systems

2. Data-Base systems (Retrieval systems and Data structures for Indexing, Abstracting, Contents and full text)
 3. XML, Dublin Core meta-tags
 4. Links between article, hyper linking
 5. ICT of DOI and CrossRef, situation of participations
 6. Electronic journals
 7. Copyright
 8. Fee charging systems
2. Research on the actual situation of library consortia, including research library consortia, university library consortia, and regional library consortia
 1. Services
 2. Organization
 3. Costs and fees for participating libraries
 4. Contracts and Roles of participating libraries
 5. Relationship with agents and publishers
 6. Performance assessment
 7. History
 8. Public support

Toshiro holds the B.S. degree in Engineering from the Science University of Tokyo. He also studied in the Graduate School of Computer Science at the University of California at Los Angeles for two years.

Mr. Takagi is accompanied by his wife, Kazuko Takagi. Mrs. Takagi is a librarian with substantial experience at Japanese libraries. She holds the B.A. degree in Economics from International Christian University (Tokyo) and the MLS from the University of California, Los Angeles. Among other positions, she has served as Head of Libraries and Information Services at the British Council in Tokyo. Most recently she was Manager of the Matsushita Library and Information Center at the International University of Japan. She has published several articles and translations in the area of library and information sciences. While in Ohio, Kazuko will be conducting her own research. She is looking for opportunities to work and/or volunteer doing something that will enhance her skills and employability when she returns to Japan in two years.

Toshiro Takagi's email is: takagi.3@osu.edu

He will be sharing an office with me (328 Thompson Library).

Maureen Donovan (donovan.1@osu.edu)

Thousands of Theses! A Retrocon Card Pulling Project

If you've been to the basement lately, you've noticed all the extra space. The card catalog cabinets, stored there for years, have been moved. The removal of these cabinets created a sense of urgency in the Cataloging Department, as staff members worked to complete the thesis card pulling project. Magda El-Sherbini, Associate Professor and Head of the Cataloging Department, coordinated the effort.



Library staff feasting on the buffet

According to Magda, University Libraries owns about 40,000 theses and dissertations that were cataloged prior to 1972, before OCLC was used to create catalog records. The theses and dissertations are Ohio State's publications and represent the first 100 years of OSU graduate school history. By adding cataloging records to the OCLC database, Worldcat, we make them available so that scholars know what OSU has, and so that graduate students are aware of earlier work.



Magda El-Sherbini handing out certificates.

Says Magda, "In the past, the theses and dissertations received full catalog records in card format, including subject headings, which we don't add in our current theses cataloging. We can use the old typed cards to create records in OCLC and then use those records to replace the brief records that exist in OSCAR."

Had they not pulled the cards, they would have depended on the shelf list, which does not provide full information such as subject headings.

"We would have added them to the OCLC database at minimal cataloging level," says Magda, "Using the 'main entry' cards from the old public

catalog, and adding full bibliographic records to the OCLC database will give the Ohio State University Libraries a significant monetary credit."

Magda and her team intensified efforts to pull the cards in anticipation of the July 18th removal of

the card catalogs.

She says, "We were planning to pull the cards but the timing of the move made it urgent."

Her department, with help from students and staff members in other departments such as the Monographs Dept., Serials/Electronic Resources, the Hilandar Library and Administration pulled about 35,000 cards, an amazing accomplishment in just two days. Everyone worked in an organized, efficient way, from alphabetic printout. They came early, stayed late, and helped one another in order to finish on time. Magda gave a party to celebrate the willingness of people, throughout the Libraries, to pitch in and help complete the card pulling project. In addition, with the help of Donna Kosch, ASD, beautiful "Certificates of Appreciation" were created for each individual volunteer. Next stage: planning converting the cards to OCLC and OSCAR full bibliographic records.



Everyone posing with cake.

Luminous Lucubrations

Last week's entry; "metage" means "The action of measuring officially the content or weight of a load."

This week's entry is "demonifuge."

Online resources for this question are available:

- [Merriam-Webster OnLine](#) - brief definitions
- [The Oxford English Dictionary](#) - lengthy, historical entries
- [The Dictionary of Difficult Words](#) - rarely used, archaic, and difficult words

Laughs

- [Calvin & Hobbes Daily Comics](#)
- [Cartoon of the Day](#)

Meeting Notes [Back to Top](#)

CAC Minutes

The minutes of the July 25th meeting of the Collections Advisory Council are now available on the web at:

</tswweb/cac072502.htm>

Lisa Iacobellis (iacobellis.2@osu.edu)

Human Resources [Back to Top](#)

Vacancies

===Administrative & Professional===

Health Sciences Library: Curator (Myers Lenahan Archivist) New Position

===Staff===

Circulation Department (Thompson Main Library): Library Associate 2 (replacing Morgan)

Health Sciences Library: Library Media Technical Assistant 2 (replacing Pfister)

In order to comply with University procedures, employees who are applying for listed vacancies must complete a Promotion/Transfer Request (form 8931, Rev 9/97) during the week of the first listing of the vacancy in the University Personnel Posting (green sheet). To ensure awareness of all vacancies which have been posted, applicants should consult the weekly green sheet rather than relying on the listing in *NEWS NOTES Online* and are encouraged to attach a resume and/or other supporting documents to the form. Prospective faculty and staff applicants who are absent during the five-day posting period and wish to apply should see Toni Morrison-Smith (morrison-smith.1@osu.edu)

Library personnel may also review University employment opportunities at <http://www.ohr.ohio-state.edu/index.htm>

Return to [OSU Libraries Home Page](#)

Ohio State University Libraries *NEWS NOTES Online* is a weekly publication edited by [Patricia Greene](#). Photography: Charles Kasek, Matthew Senne

If you have trouble accessing this page, contact Pat Greene via email (green.9@osu.edu) or at (614) 292-2404.