

LET'S MAKE LIMA NO. 1 IN EDUCATION

The Ohio State

LIMA CAMPUS

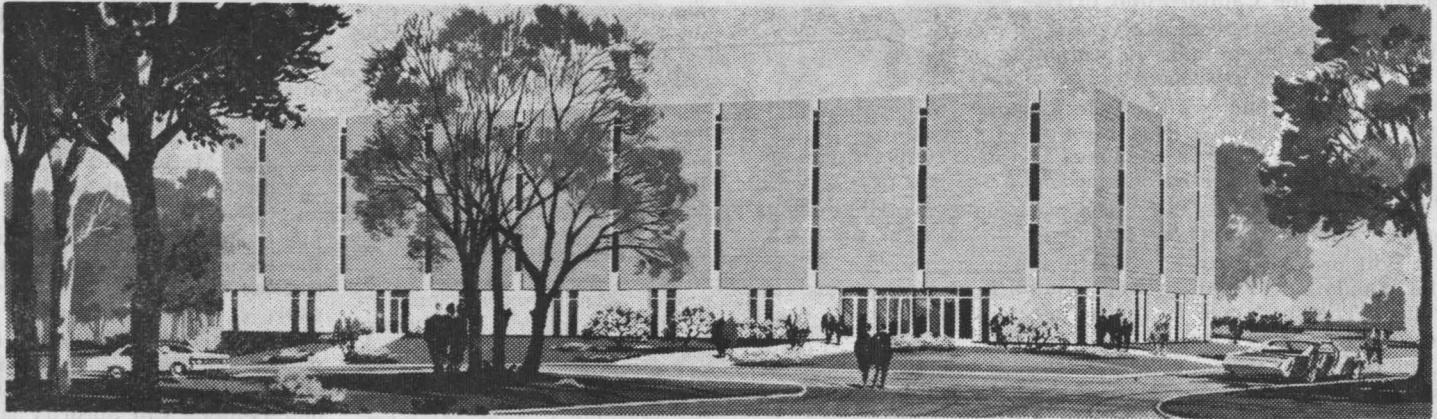
Vol. 4, No. 3



MAY 17, 1965

Lima, Ohio

Construction of First Campus Building to Begin in June



This sketch is a preview of what the first building on The Ohio State Lima Campus will look like. Engravings courtesy of Lima News

Lyman J. Strong, architect for the new branch building, recently disclosed that construction on the building may begin as soon as the end of June or early July.

If things go right by the fall of 1966, the new building should be ready for its first college students.

Mr. Strong reported that plans are going on schedule and submitted this report for the plans for April, May, and June: "On April 8, I submitted the final drawing for the Lima Branch OSU building to the state architect, the director of public works, and the OSU official for approval. April 13, I met in Columbus with OSU officials to review the final drawings.

"After this conference and after approval from the Department of Industrial Relations and the Department of Health, the final sets of plans and specifications were submitted at the middle of April for final legal action and subsequent advertising for bids.

"Bids will be due sometime in the last week of May. The contracts should be awarded to the successful bidders prior to June 1, 1965. Ground breaking and construction will start at the end of June or the first of July."

Talking about the building itself, Mr. Strong said, "The first building has been located after the completion of an overall master plan which includes the possible locations of several

buildings in the future. It will be accessible through the newly-acquired land by means of a new drive from Mumaugh Road."

The first building, according to Strong, will be located approximately in the center of the land and will be built in a wooded section.

The main entrance will be on the top of a gradual knoll and the other end will be ten feet lower for the use of a service drive in the rear.

"The exterior design," said the architect, "will be of face brick and cut stone. Windows have been kept at a minimum because of the need to totally air condition the building.

"The building has been designed modular-dimension system throughout for ease of construction and fabrication of materials.

"A mechanical core will be developed on one side of the building to house stairways, elevators, rest rooms, and other mechanical equipment."

Buildings to follow will be designed in a similar manner and discriminately placed for convenience and accessibility.

When asked how he felt about designing a future college, Strong replied, "Well, there's a lot of prestige involved. It is a wonderful opportunity architecturally speaking to be associated with a team to establish a master plan of roads, future buildings, and general concept of environment and design. It is really a thrill, I guess."

Fawcett See Third-Year Courses For 1965; Then Four-Year Campus

Eventual four-year-college facilities for the Lima Campus of Ohio State University, and advanced third-year courses for next autumn, 1965, were promised by Novice Fawcett, president of The Ohio State University last week.

Dr. Fawcett spoke at a joint meeting of the OSU Advisory Committee and the Lima Allen County Alumni Association, May 7, at a luncheon in the Crystal Room of the Argonne Hotel.

He convinced his audience of his sincere interest and high hopes for the Lima Academic Center to expand into four-year courses in the colleges of education and commerce.

Dr. Fawcett emphasized the importance of top accreditation if graduates are to enjoy the greatest prestige. He pledged the vast resources of OSU to guarantee local youth top recognition.

Dr. Fawcett pointed out that arguments are somewhat stronger for centers like this one to continue to draw upon the resources of a strong existing institution (Ohio State).

"Problems of accreditation alone, which are not understood very well by most people outside the field of education, are difficult to resolve," he said.

Paying high tribute to the Galvin Foundation for its magnanimous gift of \$250,000, Dr. Fawcett declared that foresight of the foundation was largely responsible for activating the Lima project.

The OSU President saluted Charles Cook for his energetic, friendly, and courageous leadership in the Capital-Fund

Drive.

He also commended Senator Ross Pepple for his persistent efforts to give support to the Lima Campus Center at every turn and in every appropriate way in the Ohio legislature.

Unions Give Funds For 16 Scholarships

The Executive Board of the Local UAW-CIO 1219 informed J. McLean Reed, Lima Campus director, that their Union had voted to contribute funds for 10 scholarships, worth \$3,750.

These scholarships will be awarded to deserving students of parents affiliated with the union in the Lima area, and will include top candidates from Marion and Fostoria.

The Lima Campus also received a check for \$750 for six fall-quarter scholarships from Local 106 UAW-AFL-CIO.

It is the hope of the campus that more citizen groups will follow the lead of Local 1219 and Local 106 in providing financial help for worthy college-bound students.

The Director Speaks

A Forward Look Prevails

There is no mistaking—a forward look prevails among Lima citizenry.

It manifested itself a half dozen years ago in surveys, projections, and progressive planning of forward-looking men and women who envisioned for Lima's future an institution of higher learning.

It moved step by rapid step from paper work and dreams to solid reality with the magnanimous gift of the Galvin Foundation, the selection of the building site, and the climactic over-subscribing of the Capital-Fund drive.

All this bespeaks concretely and eloquently the desires and wishes of our people to make Education #1 in our city. The benefits are tremendous in scope:

For the first time, we are able to make on the higher level a wise investment in our local resources by bringing within the reach of our youth the vast resources of a great university, where a quality education may be obtained at a bargain price.

The presence of the university will make available supplementary courses for working people in all walks of life.

It will provide cultural opportunities for the older segment of the population to pursue their interests in arts, science, and literature. The space age is a challenge to those of every age to go to school in some form.

The coming of the university will invite and entice new business and industry to our city, thereby providing a balanced economy and steady employment for all.

It will strengthen and stabilize our economy by a steadily-increasing enrollment. A thousand students and one-half hundred teachers mean a \$3,000,000 business. There can be no better guarantee in time of depression.

The new Lima Campus will create a new Lima image. This new Lima image will be YOU; it will be a bright reflection of people, places, and things.

A reflection of people who present a demeanor of intelligence, skill, competency, and good will.

A reflection of attractive cultural edifices; of appealing commercial enterprises; of diversified, thriving industrial structures, providing an attractive job market for all.

The total new provision of higher education in this space age for our high-school graduates will make a reservoir of leadership of educated young men and women who will stay here to serve in the management of public affairs and progressive planning for the shape of things to come.

Yes, endless are the benefits of the forward look of a united community.

Some Speculations on Sports

Sports at the Lima Campus, only recently organized, are not yet an integral part of activities. This year a step forward was taken in basketball.

Although the intramural system inaugurated was not completely successful, it was a start and participants affirm the necessity of continuing it.

Present plans are to create a student athletic chairmanship filled by a student interested in the future of sports and willing to undertake the responsibility of continuing the intramural system and initiating new athletic activities.

The YMCA enthusiastically supports any of the proposals in sports. The advent of a faculty-student basketball game brought an immediate offer of a gymnasium by a local high school. Such expressions of community interest are encouraging.

The future presents many opportunities and possibilities to the speculator. A recent inter-branch officers council revealed the thoughts of all concerning inter-branch athletics. The next few years will be important in determining the progress and the feasibility of this proposition.

First in importance to Lima should be the solid establishment of an intramural athletic system; subsequently, inter-branch and even inter-collegiate sports will follow.

Who a few years ago believed that Lima would become one of the largest branch campuses with possibly the most aggressive attitude in the state of Ohio?

Or who had the slightest

dream five years ago that in 1967 this same Lima Campus would in reality have its own facilities?

So who can determine in the next five years the future of athletics? As the bright fortunes of Lima campus enlarge, so also does its future in sports.

Columbus Personnel Advise Lima Senate

The Assistant Dean of Women, Miss Jane E. McCormick, and the Assistant Dean of Men, Mr. Chester Burns, visited the Lima Campus, March 31.

They came to talk to students and faculty about Lima Campus social organizations, and the recognition of these organizations by Ohio State University.

Miss McCormick, in talking with J. M. Reed, director, and representatives of the local Alpha Lambda Chi Sorority suggested the affiliation of this organization with a women's service organization on campus, possibly, the Scarlet 'n Gray.

Mr. Burns suggested that the men of the campus also form a social organization, such as the Circle "K." Both organizations, even though recognized by the University, would still be under the Lima Campus Student Senate.

Both deans said that the Student Senate would have to remain the pivot for all student activities on campus.

This is just a start for increased social activity at the Lima Campus, in conjunction with the main campus.

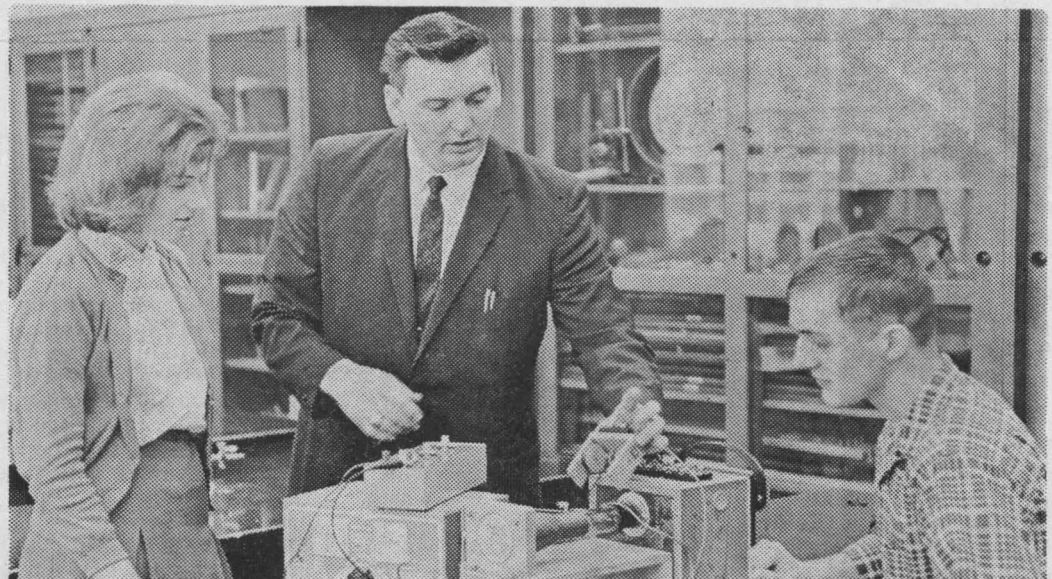
Sorority Plans June 19 Auction

Members of the Beta Sigma Phi Sorority won an accolade from the Director when they announced that they will participate in the expanding building program.

They will provide equipment for the new music room. To raise the money, they will sponsor an auction at the Allen County Fairgrounds on June 19.

To make it easy for the contributor, they will pick up donations. The donor is asked to call Mrs. Gay Edwards, 226-8154.

When the Director complimented the sorority for its display of community pride in the most outstanding venture in the history of Lima, he added, "It is our hope that other groups will emulate your example."



Two future doctors, Jerry McCluer, Harrod, and Miss Margaret Kennedy, Mendon, listen attentively as Professor Richard Ireland explains a principle in physics.

Choir Nears End Of Active Year

The Lima Campus Choir of Ohio State University is an active group of thirty singers.

With the girls in black dresses and the boys in maroon blazers, the group makes an impressive appearance at its concerts and has added much to the atmosphere of the local campus.

Also it fills an important niche in the musical life of this city.

Appearances at the Lima Management Club's annual Christmas "ladies night" program and at the Chamber of Commerce annual dinner at which Governor James Rhodes was speaker, indicate the manner in which the community has received Campus Choir.

Organized on a permanent basis this year, through the efforts of Lima Campus Director J. McLean Reed, the group is now actively completing its first year.

They gave concerts at Pandora-Gilboa High School on April 28 and at the combined Lima Campus Advisory Committee and the Allen County Alumni Association at which President Novice Fawcett was the speaker on May 7.

They will appear on a television program on WIMA late this month.

Within the personnel of the choir are two smaller singing groups—a girls' trio, the Co-eds, and a male quartet, the Buckeyes.

The Co-eds, in addition to their appearance with the choir, have presented a number of separate programs, each of which has met with enthusiastic audience response.

This spring quarter the group has added three new members to its roster and increasing enrollment at the Lima Campus in the future will be reflected in a larger choir.

Auditions for next year's choir will be held in early October. New students may sign up for auditions as they register for the autumn quarter.

Ronald W. Richards, the campus choir director, indicates that the choir is but the first of a number of musical organizations which will be formed as the local campus becomes a four-year institution.

The choir is representative of the entire 10-county area. One-half of the students reside in the city of Lima, the other half are from high schools in the Limaland area.



Two groups within choir: The Co-eds: Jane Williams, Linda Renner, Linda Worrell. The Buckeyes: Ken Crawford, Larry Andrews, Bruce Harshe, Lonnie Collins. Accompanist is Kay Beeler.

Financial-Aid Program Helps Thirty Deserving Students

The financial aid program at The Ohio State University is set up primarily to enable qualified students to attend college even though they have limited financial resources.

Types of aid available include scholarships, loans, and part-time employment.

Scholarships are granted to prospective students on the basis of high school grades which usually must average 2.25 or above. They are also granted to enrolled students who have an accumulative point-hour ratio of 2.25 or above.

Scholarships usually are awarded to students who need financial aid and have high academic ability.

About 30 scholarships are awarded on the Lima Campus to students who must qualify just as those at Columbus.

Most of these scholarships pay \$375 over a period of three quarters provided the "accume" is 2.25 or above for the immediately-preceding quarter or an equal average for the immediately - preceding high - school grades.

These scholarships originate with labor unions, Parent-Teachers Associations, Salk vac-

cine's excess funds, and service organizations.

The Hennon Estate and other individuals also are responsible for some of the scholarships. Scholarship to the Lima Campus totaled near \$8,500 for 1964-65.

The Scholarship committee for the Lima Campus meets annually in May to award these scholarships to deserving students. Mrs. Sheldon Ackerman is chairman of the group composed of Harry Martin, superintendent of Lima Public Schools; Virgil Briegel, county superintendent of schools; Howard Scheuerman, principal of the Lima Senior High School; Msgr. E. C. Herr, principal of Lima Central Catholic; and J. McLean Reed, director of Lima Campus. This committee also meets at the end of each academic quarter for necessary redistribution of scholarships.

These funds may be in the form of gifts or scholarships; they may be loans; or they may be some type of employment. Whichever they are, they are worth all the effort put forth to achieve them and then if they are repaid they will give financial aid to some other student.

Interview . . . Mike Core

Mr. Scheuerman Talks on Branch

"The students of the Lima Campus of The Ohio State University are welcome to use the facilities of Lima Senior High School as long as they need them," Howard Scheuerman, Lima Senior High School Principal, disclosed in a recent interview.

"In the beginning we were pleased to have the OSU branch because of the opportunity it gives to the students that want to go to college.

"We've had graduates from our own school system who were not able to go to college until the branch came.

"Statistics of the class of 1964 at Lima Senior alone prove the worth of the branch. Of 512 graduates in 1964, 231 went on to higher education.

"Ohio State University picked up 114 and the branch 82 of the 114 attending Ohio State.

"These 82 are 35.5 percent of all those that went on to higher education and 16 percent of those that graduated.

Once the branch was established there were other problems that had to be ironed out. "We had to give the students a chance to mix socially," said Scheuerman.

"We made arrangements to use the faculty dining room to eliminate the problem of smoking. Here the students can smoke.

"So far the college students have cooperated magnificently with this rule. In the cafeteria they can study or play cards. Another regulation is that there is to be positively no gambling.

"I'm very much pleased with parking this year. Student parking must of necessity be limited to the rear lot. Students are cooperating."

In matters of dress, the Lima Senior head said there is little trouble. "We have our high school pupils dress well. We do not allow jeans, slacks, or shorts here during the day.

"We ask the students of the branch to obey these rules until 5. After that, they may wear what they wish. So far this too has worked well."

The final note of the interview was care of school property. "When a high school student is detected defacing a desk, he must pay for the refinishing of it. Our desks are still in pretty good shape.

"All we ask is that the OSU students treat the furniture with care."



Evening's royalty, King Larry Gould and Queen Kelly Flick.

Barry Gould and Kelly Flick Reign over Annual May Dance

The annual May Dance of the Lima Campus was held May 8 at the Elks Club Ballroom.

Joint sponsors were the Alpha Lambda Chi Sorority and the Student Senate.

The highlight of the evening was the announcement of the May Court for 1965 and the crowning of the May king and queen.

Miss Kelly Flick and Barry Gould had been chosen by popular ballot to reign over the gala. In the court were Diana Crites, Denny Polter, Jackie Ford, and Howard Gratz.

The theme of "Evening Enchantment" was Hawaiian. Decorations were in shades of blue and green, and a South Seas hut, fish nets, palm trees, and sea shells added to the general effect.

The Stardusters furnished the music for the dancing. Judy Tyre and Allan Bishop sang a folk duet for intermission entertainment.

Over 130 students, in addition to some faculty members attended the affair.

Chaperones included Mr. and Mrs. William DeStephens, Mr. and Mrs. Richard Ireland, Mrs. Maxine Gillette and Leigh Sweeney, Miss Cordelia Morris, Mr. and Mrs. Jack Cusick, Mr. and Mrs. Belford Shook, and J. McLean Reed.

The committees on arrangements included: Jan Rutter and Diana Crites, co-chairman of the decoration committee; Jerry McCluer, ticket chairman; Darlyn Campbell, miscellaneous.

Misses Diana Vogelgesang and Carol Sarson were responsible for the refreshments. Mike Core and Sherri Fiscus were co-chairman of publicity.

Election of the May Queen and King was under the direction of Miss Mary Junglas, secretary of the Student Senate, and Mary Settlemire, secretary of Alpha Lambda Chi.

Student Senators Perform Services Varied in Scope

The Student Senate began the spring quarter by sponsoring a mixer at the YMCA.

Former branch student Bob Cosart, now a local D.J., spun the records for approximately 75 students as they danced in the Y's beautiful Walnut Room.

Also on the senate's spring schedule was the election of May Queen and May King.

This quarter marked the first Student Senate-faculty basketball game. Male members of the Student Senate and the faculty combined their talents on the hardwood to tangle with men from the student body. The Student Senate sponsored a dance following the game.

The senators nominated Mary Junglas and George Foscardo as Lima Campus representatives to the Ohio State University Leadership Recognition Dinner.

Both attended the dinner in the west ballroom of the Ohio Union, May 5.

The Senate will close the year by sponsoring a swim party, a popular annual event, and a picnic.

The picnic, a first-year event, is still in the planning stages. Other off-campus centers have expressed the desire of having a combined picnic at a centrally-located area.

More information concerning these two events will be posted on the bulletin boards in the front lobby and the coffee shop.

Final regular action by the Student Senate is the annual election of officers. The new officers will then be honored at the annual Student Senate breakfast, sponsored by the Lima Area Chamber of Commerce.

Campus Coed Enters Contest

Miss Linda Renner represented the Lima Campus at the mid-western Ohio Pageant at Van Wert, May 1. Miss Renner was chosen fourth runner-up and was named by all the contestants as Miss Congeniality.

A Lima Campus student and member of the Concert Choir, Miss Renner represented the Student Senate and the student body.

The pageant was sponsored by the Van Wert Junior Chamber of Commerce and was held in the Van Wert High School.

Branches Offer Pre-Engineering

A substantial portion of the College of Engineering graduating class of 1963 did not begin their college work on the Columbus Campus.

A recent study shows that 27 percent of this graduating class carried all or part of their first two years of college work at one of the branches of the university or at an independent college.

This statistic emphasizes the important opportunity which the Lima Campus provides local students who are looking forward to careers as professional engineers.

Excellence of preparation in the two-year pre-engineering curriculum can be obtained at the University Branch Campuses or at other colleges.

Admission requirements to enter the Professional Division of Ohio State's College of Engineering were then designed to include completion of 90 credit hours of work in courses in mathematics, physical and engineering sciences, communication skills in English and graphics, and socio-humanistic studies.

The course offerings at Lima have enabled a student to complete Pre-Engineering with five, or sometimes six, quarters on the Lima Campus and one final quarter on the Columbus Campus.

In this final quarter, usually carried during the summer, the student takes additional courses in mathematics, physics, and engineering mechanics necessary to pave the way for his study in his chosen professional specialty.

Opportunity for specialization in one of the eleven degree programs in the professional division of the College of Engineering is available on the Columbus Campus. There the student, well prepared by his Pre-Engineering study at Lima, finds the specialized laboratories, equipment, and teachers necessary for his continued engineering education.

Nearly three-fourths of the Lima Campus engineering students carry the full academic loads required to complete the pre-engineering curriculum in the normal two-year period. While almost half of the engineering students are employed, most full-time students find the demanding requirements of their studies leave their time for gainful employment limited to a few hours each week.