

A NEW SPECIES OF AGRILUS FROM KENTUCKY
(BUPRESTIDAE: COLEOPTERA)

J. N. KNULL

Department of Zoology and Entomology
The Ohio State University

Agrilus cladrastis n. sp.

Male.—Size and form of *A. celti* Knull, uniformly dark bronze; legs with greenish lustre; head metallic green on front.

Head convex, granulose on front, finely longitudinally rugose on occiput, clothed on lower half with dense white pubescence; antennae extending beyond middle of prothorax when laid along side, serrate from fifth joint.

Pronotum wider than long, narrower at base than at apex; sides subparallel in front, strongly narrowed basally; when viewed from side, marginal and submarginal carinae separated in front, united near base; anterior margin sinuate with broad median lobe; basal margin transversely sinuate; disk convex, with two slight median depressions, a deep lateral depression each side near margin, prehumeral carina on each side well marked. Scutellum transversely carinate.

Elytra wider than base of pronotum; sides subparallel basally, constricted about middle, widened back of middle, then narrowed to rounded serrulate apices; disk feebly longitudinally depressed, sutural margin elevated posteriorly, a broad basal depression on each elytron; surface imbricate.

Abdomen beneath finely punctate, pubescence inconspicuous, first two segments flattened in middle, slightly concave. Prosternal lobe broadly rounded in front, broadly emarginate at middle. Posterior coxa with hind margin broadly emarginate, outer angle rectangular. Anterior and middle tibiae mucronate on inner margin at apex. Posterior tarsi shorter than tibiae. Tarsal claws similar on all feet, cleft, outer tooth long, acute; inner tooth broad, very short.

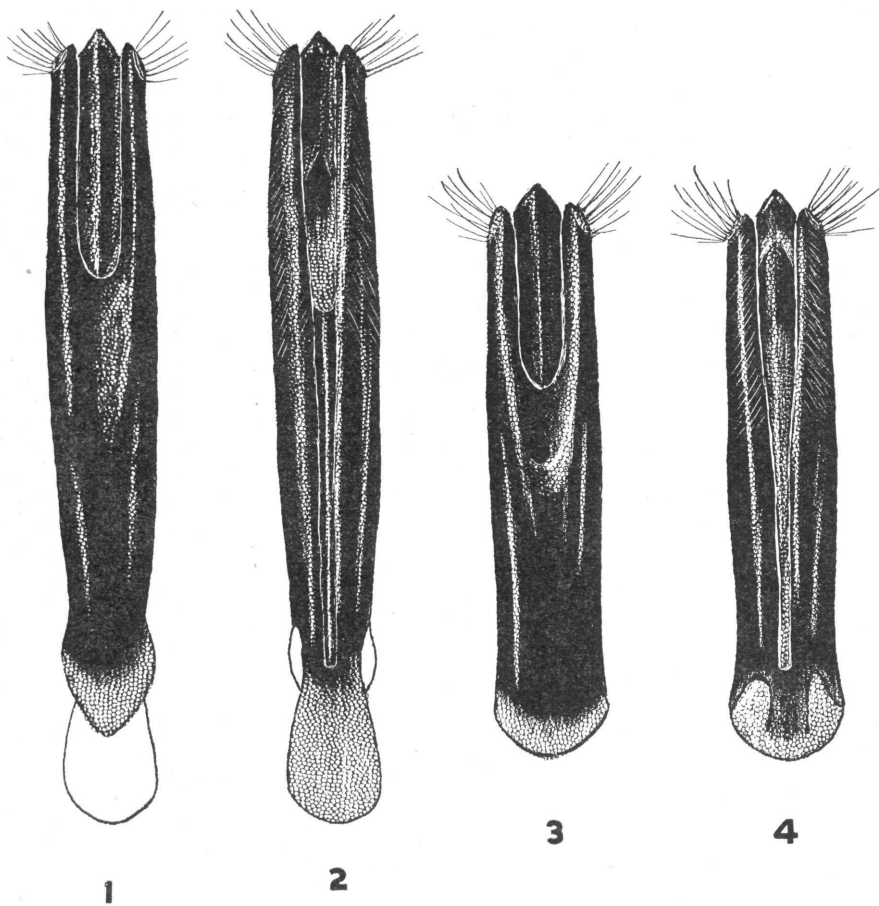
Length 4.6; width 1.2 mm.

Female.—Differs from male by not having tibiae mucronate; first two abdominal segments convex at middle.

Described from a series collected on the foliage of yellow wood (*Cladrastis lutea* (Mich.)), at Lexington, Ky., April 15, 1941, by L. H. Townsend. Holotype male, allotype and paratypes in collection of writer. Paratypes in collections of University of Kentucky and The Ohio State University.

This species runs to *A. celti* Knull in Fisher's key.¹ The males lack the brilliant viridescence of many *celti* and the median ventral line of pubescence extending from prosternum to second abdominal segment of *celti* is lacking. The male genitalia are different also.

¹W. S. Fisher, 1928. U. S. Nat. Mus. Bull. 145: 1-347.



J. N. K.

EXPLANATION OF PLATE

Male genitalia of *Agrilus*; figures 1 and 3 represent dorsal surfaces; figures 2 and 4 are ventral views.

Figures 1 and 2, *celti* Knull; 3 and 4, *cladrastis* Knull.