

# Committee on Academic Misconduct (COAM) Annual Report Summer Quarter, 2005 – Spring Quarter, 2006

Prepared by:  
Dr. Phoebe Spinrad, COAM Chairperson, 2005-2006  
Dr. Peter W. Pappas, COAM Coordinator

The University's *Code of Student Conduct* defines academic misconduct as "any activity that tends to compromise the academic integrity of the university, or subvert the educational process" (Faculty Rule 3335-23-04[A]). The Committee on Academic Misconduct (COAM) is charged with maintaining the University's academic integrity by investigating and adjudicating "all reported cases of student academic misconduct, with the exception of cases in a professional college having a published honor code, and [in instances where a student has violated the University's *Code of Student Conduct*] deciding upon suitable disciplinary action" (University Rule 3335-5-487[B]).

COAM is composed of 18 faculty members, seven graduate students (appointed by CGS), and seven undergraduate students (appointed by USG). The work of COAM is facilitated by the Coordinator who (1) receives and processes allegations of academic misconduct, (2) notifies students of allegations of academic misconduct, (3) consults with students and faculty regarding allegations of academic misconduct, (4) schedules hearings to resolve allegations of academic misconduct, and (5) notifies students and faculty of the outcomes of these hearings.

Every student accused of academic misconduct has the right to a hearing before a panel of COAM. A panel consists of at least four members of COAM, and the rules require that each panel have at least two faculty representatives and one student representative. The panel serves as an impartial hearing body that hears evidence and determines (1) if a student has violated the University's *Code of Student Conduct* and (2) an appropriate sanction in cases where a student is found "in violation." If a student agrees with the allegations of academic misconduct and waives his/her right to a hearing, he/she may have the allegations resolved as an administrative decision. For an administrative decision, a member of COAM serves as a hearing officer and determines the sanctions.

## I. SUMMARY OF CASES RESOLVED

During the 2005-2006 academic year, COAM resolved 525 cases of alleged academic misconduct. This represents a decrease of 14 cases (<3%) over the previous year. Of the cases resolved, 170 (32%) were resolved as administrative decisions and 355 (68%) were resolved as panel hearings (**Table 1**). Females and males represented 36% and 64%, respectively, of the cases resolved (**Table 2**).

**Table 1.**  
**Committee on Academic Misconduct**  
**Summary of Total Cases Resolved and Method of Resolution**  
**2005-2006 Academic Year**

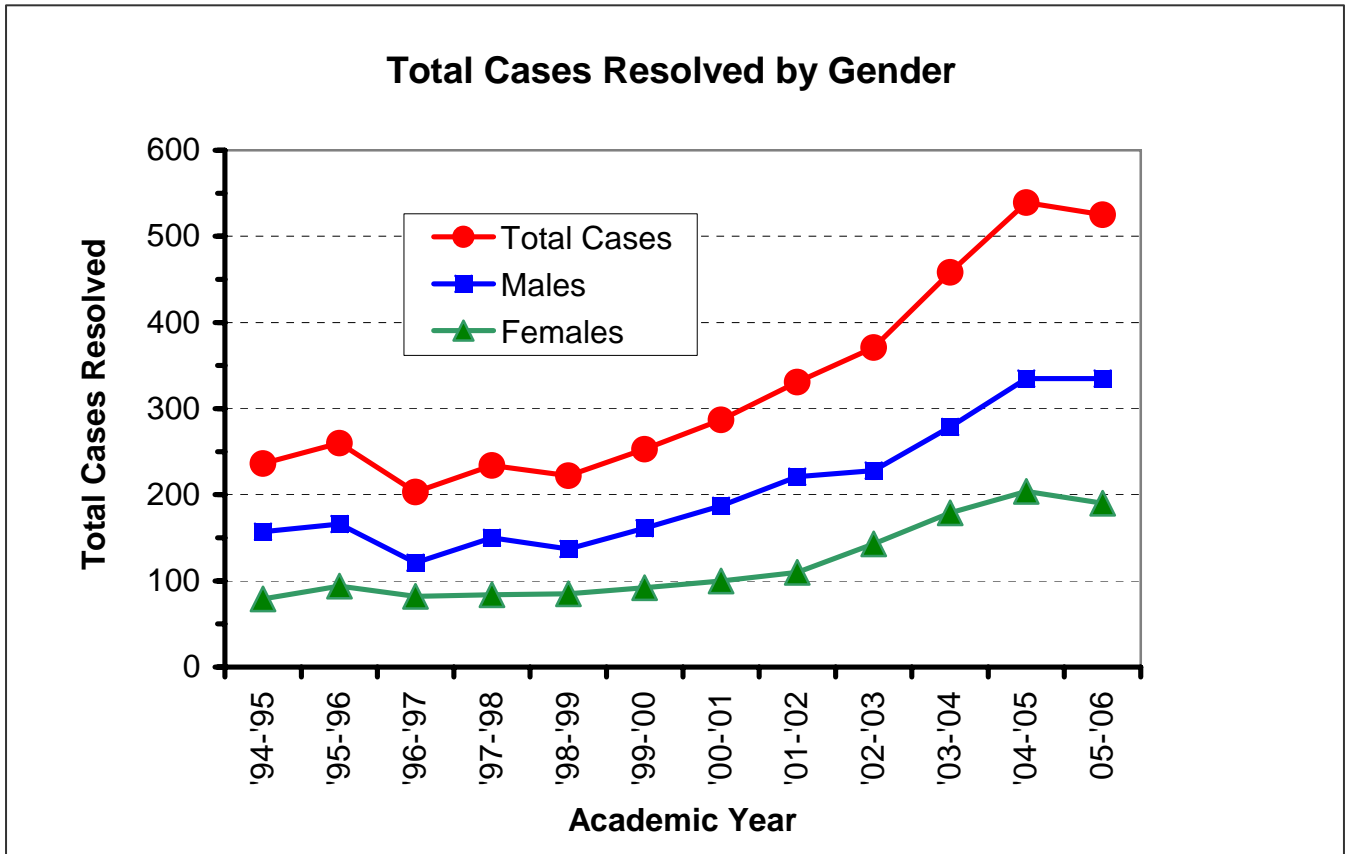
	Number of Cases	% of Total Cases
Administrative Decisions	170	32.4
Panel Hearings	355	67.6
<b>Totals</b>	<b>525</b>	<b>100.0%</b>

**Table 2.**  
**Committee on Academic Misconduct**  
**Summary of Total Cases Resolved and Student's Gender**  
**2005-2006 Academic Year**

Gender	Number of Cases	% of Total Cases
Female	190	36.2
Male	335	63.8
<b>Totals</b>	<b>525</b>	<b>100.0%</b>

**Figure 1** summarizes the total cases resolved by COAM and the distribution of these cases between males and females for the past 12 academic years. During this period, the number of cases resolved by COAM each year has more than doubled. However, the distribution of cases between males and females has not changed dramatically, with males accounting routinely for approximately 60% of the cases resolved by COAM.

**Figure 1.**  
**Committee on Academic Misconduct**  
**Summary of Total Cases Resolved and Student's Gender**  
**Academic Years 1994-1995 through 2005-2006**



Of the 525 cases resolved by COAM this past year, 63 (12%) and 462 (88%) resulted in verdicts of “not in violation” and “in violation,” respectively, and the rates at which males and females were found “in violation” of the *Code of Student Conduct* were approximately equal (**Table 3**).

**Table 3.**  
**Committee on Academic Misconduct**  
**Distribution of Cases Resolved Based on Students' Gender and Verdict**  
**2005-2006 Academic Year**

Gender	Students Found "Not In Violation"	Students Found "In Violation"	Total Cases	% In Violation (% of Total for Gender)
Female	19	171	190	89.5
Male	44	291	335	86.9
<b>Totals</b>	<b>63</b>	<b>462</b>	<b>525</b>	<b>88.0</b>

## II. SUMMARY OF ACADEMIC MISCONDUCT CHARGES

When allegations of academic misconduct arise, a student often does not know or understand what he/she has allegedly done wrong. Since COAM desires that the hearing process be an educational process, the Coordinator charges the student with violating the *Code of Student Conduct* using terminology that explains the nature of the behavior that lead to the allegations. **Table 4** summarizes information on academic misconduct charges for the 2005-2006 academic year. The left column is a list of the charges used most commonly by COAM. The "Number of Students" column lists the total number of students charged with a particular violation, and the "% of Total" column lists the "Number of Students" as a percentage of the total charges (942). The last two columns list the number of students found "in violation" (Number IV) of each charge and the number of students found "in violation" of each charge as a percentage of the total number of students charged. For example, of 221 students charged with plagiarism, 215 (97.3%) were found "in violation."

Students are often charged with and found "in violation" of more than one charge. Thus, the total number of charges (942) exceeds the total cases resolved by COAM (525), and the total for "Number IV" (723) exceeds the actual number of students found "in violation" (462).

The relatively low values for the percentages of students found "in violation" of unauthorized collaboration and copying are misleading. They result because COAM often treats the charges of "copying" and "unauthorized collaboration" as mutually exclusive. In many of the cases where COAM receives information alleging that one student may have copied the work of another student, it's not clear which student (if

any) copied and whether or not there was collusion (working together in an unauthorized manner). Thus, in many of these cases, all of the students involved are charged with copying **and** unauthorized collaboration, but, if found “in violation,” they are found “in violation” of only copying **or** unauthorized collaboration.

**Table 4.**  
**Committee on Academic Misconduct**  
**Summary of Charges for Which Students Were Found**  
**“In Violation” of the University’s *Code of Student Conduct***  
**2005-2006 Academic Year**

Charge	Number of Students	% of Total	Number IV	% IV
Plagiarism (submitting plagiarized work in fulfillment of an academic assignment)	221	23.5	215	97.3
Copying (attempting to copy) the work of another student in an unauthorized manner and misrepresenting (attempting to misrepresent) it as one's own work	226	24.0	130	57.5
Unauthorized collaboration (any instance where two or more students work together and/or share information in a manner that is unauthorized)	200	21.2	137	68.5
Failure to comply with course/program policies and/or guidelines	189	20.1	160	84.7
Submission of work not performed in a course	15	1.6	11	73.3
Engaging in activities that place other students at an unfair advantage.	3	0.3	3	100
Possession and/or use of unauthorized materials during an examination or other course activity	12	1.3	10	83.3
Forgery	10	1.1	10	100

Charge	Number of Students	% of Total	Number IV	% IV
Alteration and resubmission of course materials in an attempt to change the earned credit or grade	4	0.4	4	100
Requesting and/or receiving unauthorized assistance during an examination, course activity, and/or academic assignment	42	4.5	26	61.9
Serving as or enlisting the assistance of a substitute during the completion of an academic assignment or other course activity	5	0.5	3	60.0
Other charges	15	1.6	14	93.3
<b>Totals</b>	<b>942</b>	<b>100.0</b>	<b>723</b>	

### III. SUMMARY OF CASES BASED ON STUDENT'S COLLEGE OF ENROLLMENT AND REFEREEING DEPARTMENT

Over 20 enrollment units on campus were represented by the cases resolved by COAM during the past year (**Table 5**), but the students from four enrollment units (College of Engineering [ENG], Undergraduate Student Academic Services [USAS], College of Social and Behavioral Sciences [SBS], and College of Business), when combined, accounted for nearly 60% of all cases.

**Table 5.**  
**Committee on Academic Misconduct**  
**Distribution of Cases Based on Student's Enrollment Unit**  
**2005-2006 Academic Year**

Enrollment Unit	Total for Enrollment Unit	% of All Cases
AGR (College of Food, Agriculture and Environmental Sciences)	17	3.2
AHR (School of Architecture)	4	0.8

Enrollment Unit	Total for Enrollment Unit	% of All Cases
AMP (School of Allied Medical Professions)	10	1.9
ART (College of Art)	6	1.1
ASC (Colleges of the Arts and Sciences)	9	1.7
ATI (Agricultural Technical Institute)	26	5.0
BIO (College of Biological Sciences)	27	5.1
BUS (College of Business)	90	17.1
CED (Continuing Education)	2	0.4
DHY (Dental Hygiene)	1	0.2
EDU (College of Education)	12	2.3
ENG (College of Engineering)	51	9.7
GRD (Graduate School)	16	3.0
HEC (College of Human Ecology)	27	5.1
HUM (College of Humanities)	24	4.6
JUR (School of Journalism and Communications)	3	0.6
MPS (College of Mathematical and Physical Sciences)	9	1.7
MUS (School of Music)	1	0.2
NRE (College of Natural Resources)	2	0.4
NUR (College of Nursing)	9	1.7
PHR (College of Pharmacy)	9	1.7
SBS (College of Social and Behavioral Sciences)	73	13.9
SWK (College of Social Work)	2	0.4
USAS (Undergraduate Student Academic Services)	95	18.1
<b>Totals</b>	<b>525</b>	<b>100.0%</b>

The cases heard by COAM during the past year originated from over 65 departments across the University (**Table 6**), with the combined cases from Computer Science and

Engineering (16.0% of all cases), Chemistry (6.1%), History (9.7%), and English (6.5%) accounting for nearly 40% of the total cases.

**Table 6.**  
**Committee on Academic Misconduct**  
**Distribution of Cases Based on Referring Department**  
**2005-2006 Academic Year**

Course (Department)	Number of Cases	% of Total
ACCT&MIS [Accounting and Management Information Systems]	4	0.8
AERO ENG [Aeronautical and Astronautical Engineering]	2	0.4
AFAM&AST [African American and African Studies]	2	0.4
ALLI MED [Allied Medicine]	4	0.8
ANIM SCI [Animal Sciences]	1	0.2
ANTHROP [Anthropology]	4	0.8
ARCH [Architecture]	1	0.2
ART	1	0.2
ART EDUC [Art Education]	4	0.8
ARTS&SCI [Arts and Sciences]	1	0.2
ASTRON [Astronomy]	2	0.4
BIOCHEM [Biochemistry]	1	0.2
BIOLOGY	2	0.4
BUS ADM [Business Administration]	2	0.4
BUS TEC [Business Technology]	11	2.1
BUS-M&L [Business Administration: Marketing and Logistics]	2	0.4
BUS-MGT [Business Administration: Management Sciences]	15	2.9
C&R PLAN [City and Regional Planning]	2	0.4



Course (Department)	Number of Cases	% of Total
CHBE [Chemical and Biomolecular Engineering]	2	0.4
CHEM [Chemistry]	32	6.1
CHINESE	1	0.2
CLASSICS	1	0.2
COMM [Communications]	4	0.8
COMP STD [Comparative Studies in the Humanities]	5	1.0
CS&E [Computer Science and Engineering]	84	16.0
DANCE	1	0.2
ECE [Electrical and Computer Engineering]	2	0.4
ECON [Economics]	9	1.7
EDU P&L [Education: Educational Policy and Leadership]	8	1.5
EDU PAES [Education: Physical Activity and Education Services]	4	0.8
EDU T&L [Education: Teaching and Learning]	1	0.2
EEOB [Evolution, Ecology, and Organismal Biology]	7	1.3
ENG TECH [Engineering Technology]	10	1.9
ENGINEER [Engineering]	13	2.5
ENGLISH	34	6.5
FA&B ENG [Food, Agricultural, and Biological Engineering]	2	0.4
FRENCH	1	0.2
GEN S SC [General Studies: Social Science]	3	0.6
GEOG [Geography]	8	1.5
GERMAN	2	0.4
HDFS [Human Development and Family Science]	1	0.2
HIST ART [History of Art]	1	0.2
HISTORY	51	9.7

Course (Department)	Number of Cases	% of Total
HOSP MGT [Hospitality Management]	3	0.6
IND ENG [Industrial and Systems Engineering]	7	1.3
INT STDS [International Studies]	4	0.8
LINGUIST [Linguistics]	24	4.6
MATH [Mathematics]	9	1.7
MECH ENG [Mechanical Engineering]	4	0.8
MED TECH [Medical Technology]	1	0.2
MEDIEVAL [Medieval and Renaissance Studies]	1	0.2
MUSIC	4	0.8
NURSING	2	0.4
OTHER (cases involving students who were not enrolled in a formal course)	5	1.0
PHARMACY	3	0.6
PHILOS [Philosophy]	17	3.2
PHYSICS	2	0.4
PLNT BIO [Plant Biology]	1	0.2
POLIT SC [Political Science]	9	1.7
PSYCH [Psychology]	15	2.9
RUSSIAN	5	1.0
SBS COLL [Social and Behavioral Sciences, College of]	1	0.2
SOC WORK [Social Work]	4	0.8
SOCIOL [Sociology]	20	3.8
SPANISH	7	1.3
SPH/HRNG [Speech and Hearing Science]	2	0.4
STAT [Statistics]	16	3.0
THEATRE	5	1.0
WOM STDS [Women's Studies]	4	0.8
YIDDISH	2	0.4

Course (Department)	Number of Cases	% of Total
<b>TOTALS</b>	<b>525</b>	<b>100.0</b>

#### **IV. SUMMARY OF CASES BASED ON STUDENT'S RANK AND COURSE LEVEL**

Nearly 40% of the cases resolved by COAM during the past year were the result of allegations of misconduct in 100-level courses. Progressively fewer cases resulted from allegations in progressively higher-level courses (**Table 7**).

**Table 7.  
Committee on Academic Misconduct  
Distribution of Cases Based on Course Level (Number)  
2005-2006 Academic Year**

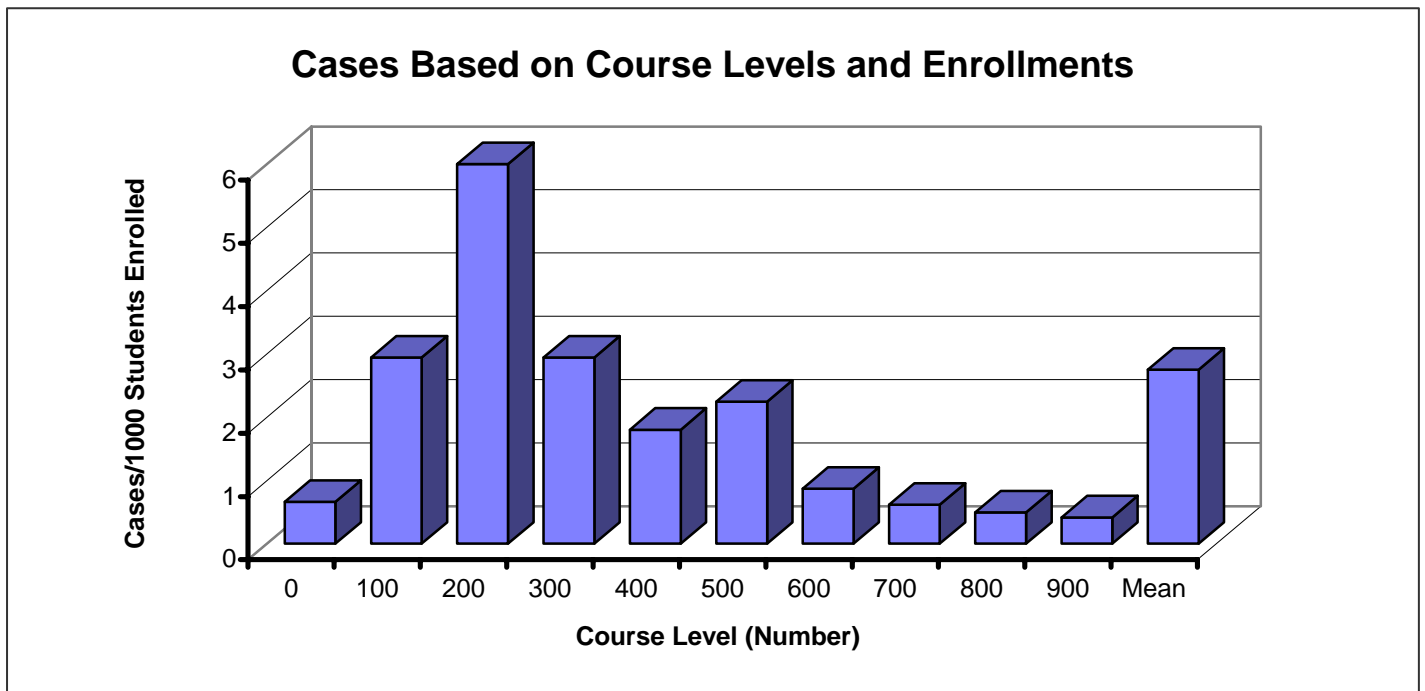
(N/A in the following table refers to those cases in which the alleged academic misconduct did not take place while the student was enrolled in a formal course.)

Course Level	Cases	% of Total
000	2	0.4
100	203	38.7
200	176	33.5
300	49	9.3
400	19	3.6
500	40	7.6
600	15	2.9
700	8	1.5
800	5	1.0
900	2	0.4
N/A	6	1.1
<b>Totals</b>	<b>525</b>	<b>100.0</b>

Although 100-level courses accounted for nearly 40% of the allegations of academic misconduct, the “rate” of allegations (i.e., the number of cases based on the total numbers of students enrolled) was actually highest in 200-level courses (**Figure 2**).

**Figure 2.**  
**Committee on Academic Misconduct**  
**Distribution of Cases Based on Course Level and Enrollment**  
**2005-2006 Academic Year**

(For each course-level, the total number of cases for that level was divided by the total number of students enrolled in all courses for that level, and the resulting number was multiplied by 1000. Enrollment data for Autumn Quarter, 2005, were obtained from the Registrar’s Office and used for these calculations.)



**Table 8** summarizes the cases resolved for undergraduate students only (i.e., ranks 1 through 4). The data demonstrate that students in progressively higher class ranks tended to be charged with academic misconduct in progressively higher level courses. For example, almost all cases involving rank 1 students occurred in 100 and 200-level courses (127 of 132 cases = 96%), while nearly half of the cases involving rank 4 students occurred in courses at the 300-level and above (55 of 118 cases = 47%).

**Table 8.**  
**Committee on Academic Misconduct**  
**Distribution of Cases Based on Student Rank and Course Level**  
**2005-2006 Academic Year**

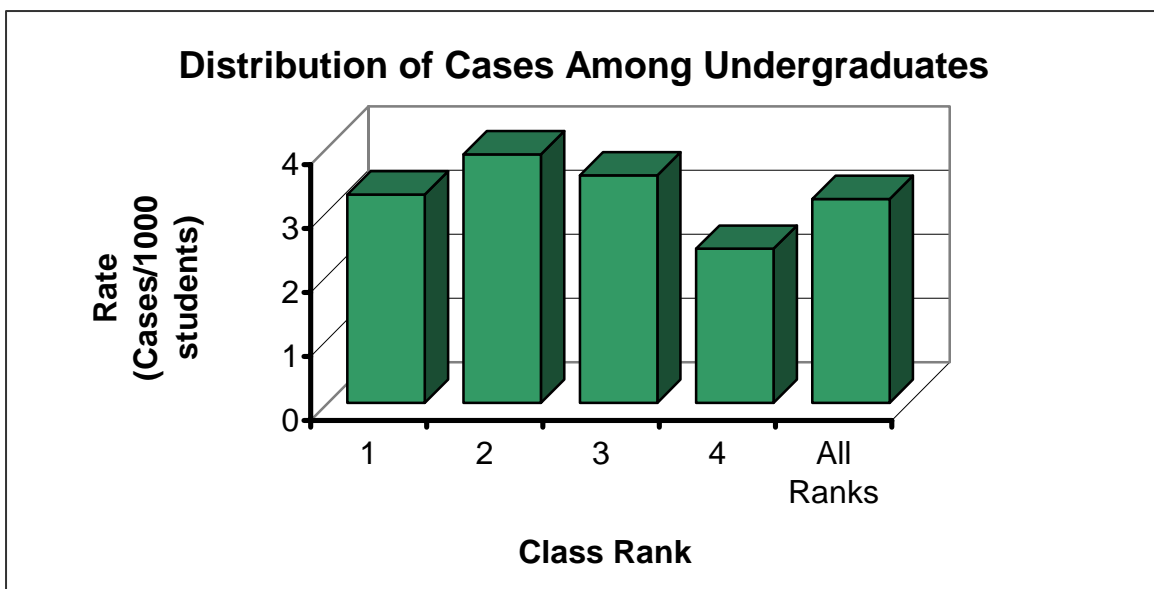
(The following table includes data for only ranks 1, 2, 3, and 4 students who were charged with academic misconduct in a formal course. Thus, the data in this table represent 498 of the 525 total cases resolved during the past academic year.)

Level	Class Rank				Totals
	1	2	3	4	
000	2	0	0	0	2
100	74	48	35	43	200
200	53	58	43	20	174
300	2	20	18	8	48
400	1	3	4	11	19
500	0	2	12	26	40
600	0	1	4	8	13
700	0	0	0	2	2
<b>Totals</b>	<b>132</b>	<b>132</b>	<b>116</b>	<b>118</b>	<b>498</b>

The data in **Table 8** also show that the cases were distributed approximately equally among the student ranks. However, when the data were calculated as rates (i.e., calculated on the basis of the number of students enrollment for each class rank), the highest rate of cases involved rank 2 students and the lowest rate of cases involved rank 4 students.

**Figure 3.**  
**Committee on Academic Misconduct**  
**Distribution of Cases for Undergraduate Students**  
**Based on Class Rank and Enrollment.**  
**2005-2006 Academic Year.**

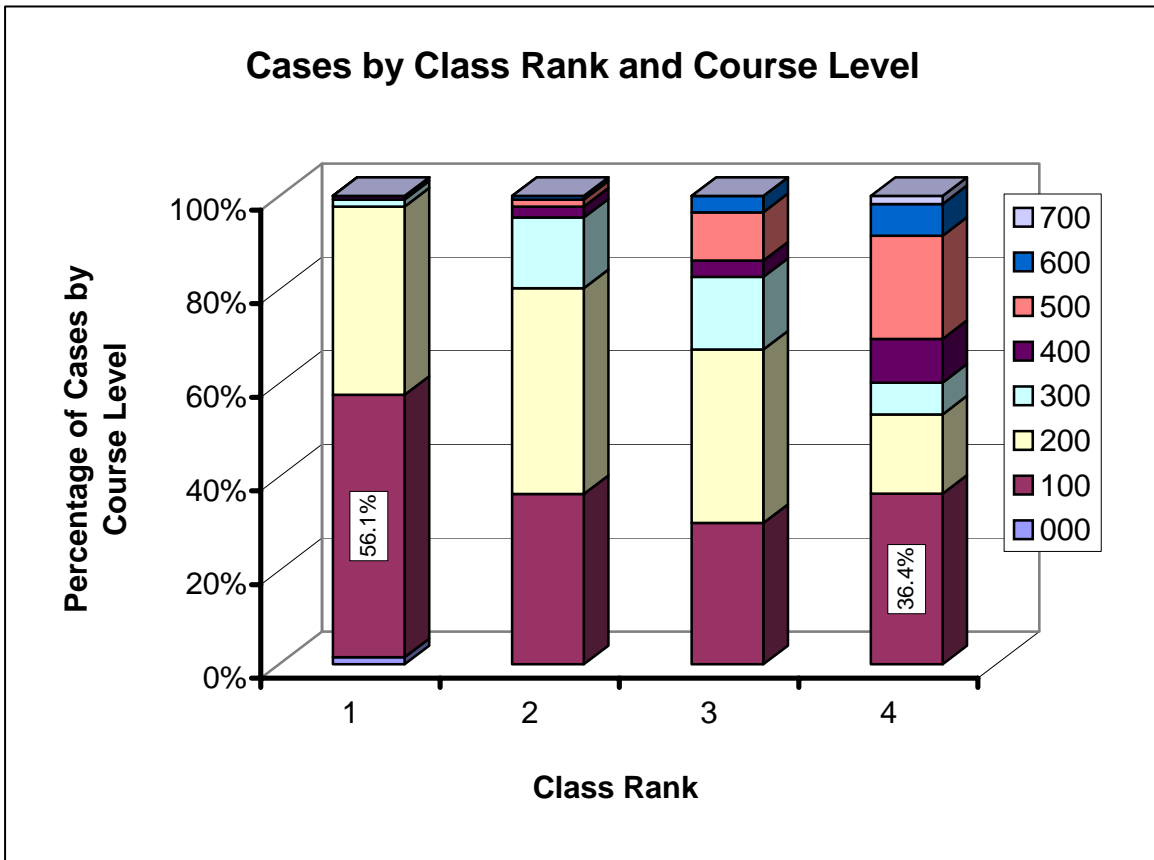
(For this Figure, the number of cases for each rank [see Table 8] was divided by the total enrollment for that rank and then multiplied by 1000. The “All Ranks” bar represents the mean value for ranks 1 through 4. Enrollment figures for the Autumn Quarter, 2005, for each rank were obtained from the Registrar’s Office and used to calculate these data.)



**Figure 4** summarizes the distribution of cases among different class ranks and course levels. This figure demonstrates clearly that a majority of allegations involving rank 1 occurred in 100-level (56.1%) courses. Also notable is the observation that 100-level courses accounted for the highest percentage of academic misconduct cases involving rank 4 students (36.4%).

**Figure 4.**  
**Distribution of Cases by Course Level and Student's Class Rank**  
**2005-2006 Academic Year**

(For this Figure, the data in **Table 8** for each course level within each class rank were calculated as a percentage of the total cases for that class rank, and the data for the course levels within each class rank were plotted as cumulative percentages.)



## VI. Summary of Disciplinary and Grade Sanctions

When COAM finds that a student has violated the University's *Code of Student Conduct*, COAM imposes sanctions. The sanction always includes a disciplinary component, and, in a majority of cases, the sanction also includes a grade-related component.

The disciplinary sanctions imposed by COAM and the numbers of cases involved are summarized in **Table 9**. As these data demonstrate, most students found in violation of the *Code of Student Conduct* received a sanction of “disciplinary probation.”

**Table 9.**  
**Committee on Academic Misconduct**  
**Summary of Disciplinary Sanctions**  
**2005-2006 Academic Year**

(Of the 525 cases heard during the 2005-2006 Academic Year, 462 resulted in a finding of “In Violation,” and only these resulted in a disciplinary sanction.)

Disciplinary Sanction	Number of Cases	% of Cases
Formal reprimand	8	1.7%
Disciplinary probation (range = 1 quarter to “until graduation”)	415	89.8%
Suspension (range = 1 to 3 quarters)	35	7.6%
Dismissal	4	0.9%
<b>Totals</b>	<b>462</b>	<b>100.0%</b>

The grade sanctions imposed by COAM and the numbers of cases involved are summarized in **Table 10**. As these data demonstrate, most students found “in violation” of the University’s *Code of Student Conduct* fail the course in which the misconduct occurred.



**Table 10.**  
**Committee on Academic Misconduct**  
**Summary of Grade Sanctions**  
**2005-2006 Academic Year**

(Of the 525 cases heard during the 2005-2006 Academic Year, 462 resulted in a finding of "In Violation." In 17 of these cases, no grade sanction was authorized for the following reasons: a grade sanction was not applicable (11 cases); the panel or hearing officer did not authorize a grade sanction (1 case); the student withdrew from the course prior to resolving the allegations (5 cases).

Grade Sanction	Number of Cases	% of Cases
None	17	3.7%
Authorization for a "0" on the assignment	38	8.2%
Authorization for a "0" on the assignment and then a reduction in the student's final grade by one full letter grade	116	25.1%
Authorization for a final grade of "E" in the course	276	59.7%
Other	15	3.3%
<b>Totals</b>	<b>462</b>	<b>100.0%</b>

As noted above, when a student is found "in violation" of the University's *Code of Student Conduct*, COAM imposes both disciplinary and grade-related sanctions. Thus, by using various combinations of these two sanctions, COAM can impose sanctions that are commensurate with the severity of the academic misconduct. **Table 11** contains a summary of all of the disciplinary and grade-related sanctions imposed by COAM during the previous year.

**Table 11.**  
**Committee on Academic Misconduct**  
**Disciplinary and Grade Sanctions, Combined Summary**  
**2005-2006 Academic Year**

Disciplinary Sanction	Grade Sanction	Rank 1	Rank 2	Rank 3	Rank 4	Rank M	Rank P	Other Ranks	Totals
Formal Reprimand	None (not applicable)	1	0	0	0	0	0	0	1
	Reduce grade on assignment by one full letter grade	0	2	0	0	0	0	0	2
	"0" on assignment	1	3	1	0	0	0	0	4
<hr/>									
Subtotals		2	5	1	3	0	0	0	8
<hr/>									
Disciplinary Probation (1 Quarter)	None (no recommendation)	0	0	1	0	0	0	0	1
<hr/>									
Subtotals		0	0	1	0	0	0	0	1
<hr/>									
Disciplinary Probation (2 Quarters)	None (not applicable)	0	0	1	0	0	0	0	1
	"0" on assignment	2	3	1	0	0	0	0	6

Disciplinary Sanction	Grade Sanction	Rank 1	Rank 2	Rank 3	Rank 4	Rank M	Rank P	Other Ranks	Totals
	Reduction in the final course grade by one full letter grade	0	0	1	0	0	0	0	1
Subtotals		2	3	3	0	0	0	0	8
Disciplinary Probation (3 Quarters)	"0" on assignment	8	2	0	0	0	0	0	10
	"E" on assignment	0	0	1	0	0	0	0	1
	"0" on assignment and a further reduction in the final course grade by one full letter grade	9	4	2	0	0	0	1	16
	Reduction in the final course grade by one full letter grade	0	1	0	0	0	0	0	1
	Reduction in the final course grade by two full letter grades	1	0	0	0	0	0	0	1
	"E" in course	3	9	7	0	0	0	0	19
Subtotals		21	16	10	0	0	0	1	48
Disciplinary Probation (4	None (not applicable)	0	1	1	0	0	0	0	2

Disciplinary Sanction	Grade Sanction	Rank 1	Rank 2	Rank 3	Rank 4	Rank M	Rank P	Other Ranks	Totals
Quarters)	None (student withdrew)	0	2	2	0	0	0	0	4
	None (not applicable)	2	0	2	0	0	0	1	5
	"0" on assignment	5	2	1	1	1	0	1	11
	"0" on assignment and a further reduction in the final course grade by one full letter grade	36	31	18	1	0	0	0	86
	"0" on assignment and a further reduction in the final course grade by two full letter grades	1	0	0	0	0	0	0	1
	"E" on assignment and a further reduction in the final course grade by one full letter grade	2	0	0	0	0	0	0	2
	Reduction in final course grade by one full letter grade	0	0	0	0	0	0	1	1
	"E" in course	39	49	42	7	0	0	0	137
Subtotals		85	84	65	9	1	0	3	171
Disciplinary Probation (8 Quarters)	"0" on assignment and a further reduction in the final course grade by one full letter grade	1	0	0	0	0	0	0	1
Subtotals		1	0	0	0	0	0	0	1

Disciplinary Sanction	Grade Sanction	Rank 1	Rank 2	Rank 3	Rank 4	Rank M	Rank P	Other Ranks	Totals
Disciplinary Probation (until graduation)	None (not applicable)	0	0	0	1	0	0	0	1
	None (student withdrew)	0	0	0	1	0	0	0	1
	"0" on assignment	0	1	1	1	2	0	0	5
	"0" on assignment and a further reduction in the final course grade by one full letter grade	0	1	2	11	0	0	0	14
	Reduction in final grade by one full letter grade	0	0	1	1	0	0	0	2
	"E" in course	2	0	14	66	1	3	1	87
Subtotals									
		2	2	18	81	3	3	1	110
Suspension (1 Quarter)									
	"0" on assignment	0	0	0	0	0	0	1	1
	"E" in the course	1	1	1	5	2	1	0	11
Subtotals									
		1	1	1	5	2	1	1	12
Suspension (2 Quarters)									
	None (not applicable)	0	0	1	1	0	0	0	2

Disciplinary Sanction	Grade Sanction	Rank 1	Rank 2	Rank 3	Rank 4	Rank M	Rank P	Other Ranks	Totals
	Revoke transfer credit	0	0	0	1	0	0	0	1
	Fail candidacy examination	0	0	0	0	0	1	0	1
	"E" in the course	1	1	1	8	1	2	1	15
Subtotals									
		1	1	2	10	1	3	1	19
Suspension (3 Quarters)									
	"E" in the course	1	0	0	2	0	1	0	4
Subtotals									
		1	0	0	2	0	1	0	4
Dismissal									
	None (not applicable)	0	0	0	1	0	0	0	1
	"E" in the course	0	0	1	2	0	0	0	3
Subtotals									
		0	0	1	3	0	0	0	4
Total "In Violation"									
		116	112	104	108	7	9	6	462
Total "Not in Violation"									
		16	20	14	13	0	0	0	63

<b>Disciplinary Sanction</b>	<b>Grade Sanction</b>	<b>Rank 1</b>	<b>Rank 2</b>	<b>Rank 3</b>	<b>Rank 4</b>	<b>Rank M</b>	<b>Rank P</b>	<b>Other Ranks</b>	<b>Totals</b>
Total Cases		132	132	118	121	7	9	6	525