

A NEW *AGRILUS* FROM THE CHIRICAHUA
MOUNTAINS OF ARIZONA

(COLEOPTERA: BUPRESTIDAE)

JOSEF N. KNULL

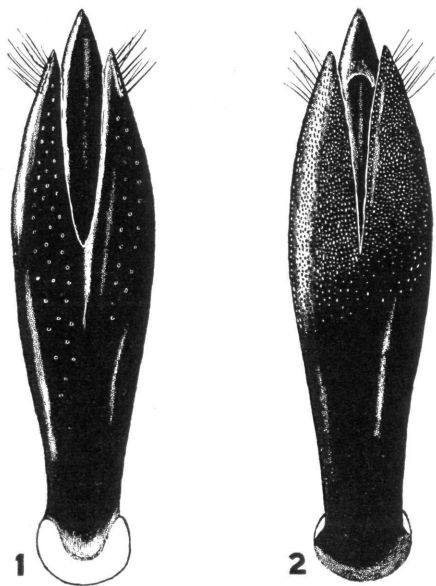
*Department of Zoology and Entomology,
The Ohio State University, Columbus 10*

The following *Agrilus* was among material sent for identification.

***Agrilus howdeni* n. sp.**

Male.—Size and form of *A. celti* Knull, shining greenish bronze throughout, front opaque green.

Head convex, without median depression; surface on front granulose, with well separated light punctures, vertex strigose; antennae short, not reaching to middle of pronotum when laid along side, serrate from fifth segment.



Male genitalia of *Agrilus howdeni* n. sp. 1. dorsal view; 2. ventral view.

Pronotum convex, wider than long, widest in front of middle, narrower at base than at apex; sides converging from back of apex toward base, then expanded at base; when viewed from side, marginal and submarginal carinae separated and joined at base; anterior margin sinuate, median lobe broadly rounded; base strongly sinuate, median lobe emarginate; disk convex, slight indication of median depression, a strong lateral depression each side, prehumeral carinae well developed; surface transversely rugose, punctate between rugae. Scutellum transversely carinate, surface reticulate.

Elytra at base wider than base of pronotum; sides subparallel near base, constricted back of middle, then broadly rounded to rounded serrulate apices; disk with sutural margin elevated posteriorly, each elytron with a strong basal depression and a shallow elongate depression on

basal half; surface imbricate-punctate, sparsely clothed with short inconspicuous white hairs, median depression and a rounded area on apical third near suture with longer pubescence.

Abdomen beneath densely, finely punctate, recumbent pubescence short; first and second segments slightly concave. Prosternum clothed with longer white pubescence, which extends along ventral surface to third abdominal segment; prosternal lobe broadly rounded, prosternal process expanded back of coxal cavities. Posterior coxae emarginate along margin, exterior angle acute. Tibiae slender, anterior and middle pairs armed with a tooth on inside at apices. Tarsal claws similar on all feet, cleft near middle, outer tooth acute, inner tooth broad, much shorter, claws not turned inward.

Length 3.6 mm.; width .9 mm.

Female.—First two ventral segments convex at middle, median line of pubescence lacking; tibiae unarmed at apices.

Holotype ♂, allotype and one ♀ paratype collected from sycamore (*Platanus wrightii* Wats.) at Southwestern Research Station of American Museum of Natural History, Portal, Arizona, June 10, 1956 by H. and A. Howden.

Holotype in collection of author, allotype and paratype in collection of H. F. Howden. I take pleasure in naming this insect for Dr. Howden.

According to Fisher (1928) this species runs to *A. abductus* Horn. The smaller size, color, convex pronotum and type of pubescence on elytra will distinguish it. The genitalia are also different.

REFERENCE

Fisher, W. S. 1928. A revision of the North American species of buprestid beetles belonging to the genus *Agrilus*. U. S. Nat. Mus. Bull. 145: 1-347.
