

# IOWA OHIO STATE

OCTOBER 27 ...  
1951



25  
CENTS



# Be Happy- Go Lucky!

EILEEN WILSON, Lucky Star of TV and Radio, says:

**A**t football games I love to cheer  
"Go team!" and "Hip Hooray!"  
But for a better taste I shout,  
"Go Lucky Strike today!"

(Luckies taste better than any other cigarette!)



**LUCKIES TASTE BETTER  
THAN ANY OTHER CIGARETTE !**

**L.S./M.F.T.-  
Lucky Strike Means Fine Tobacco**



# CONTENTS

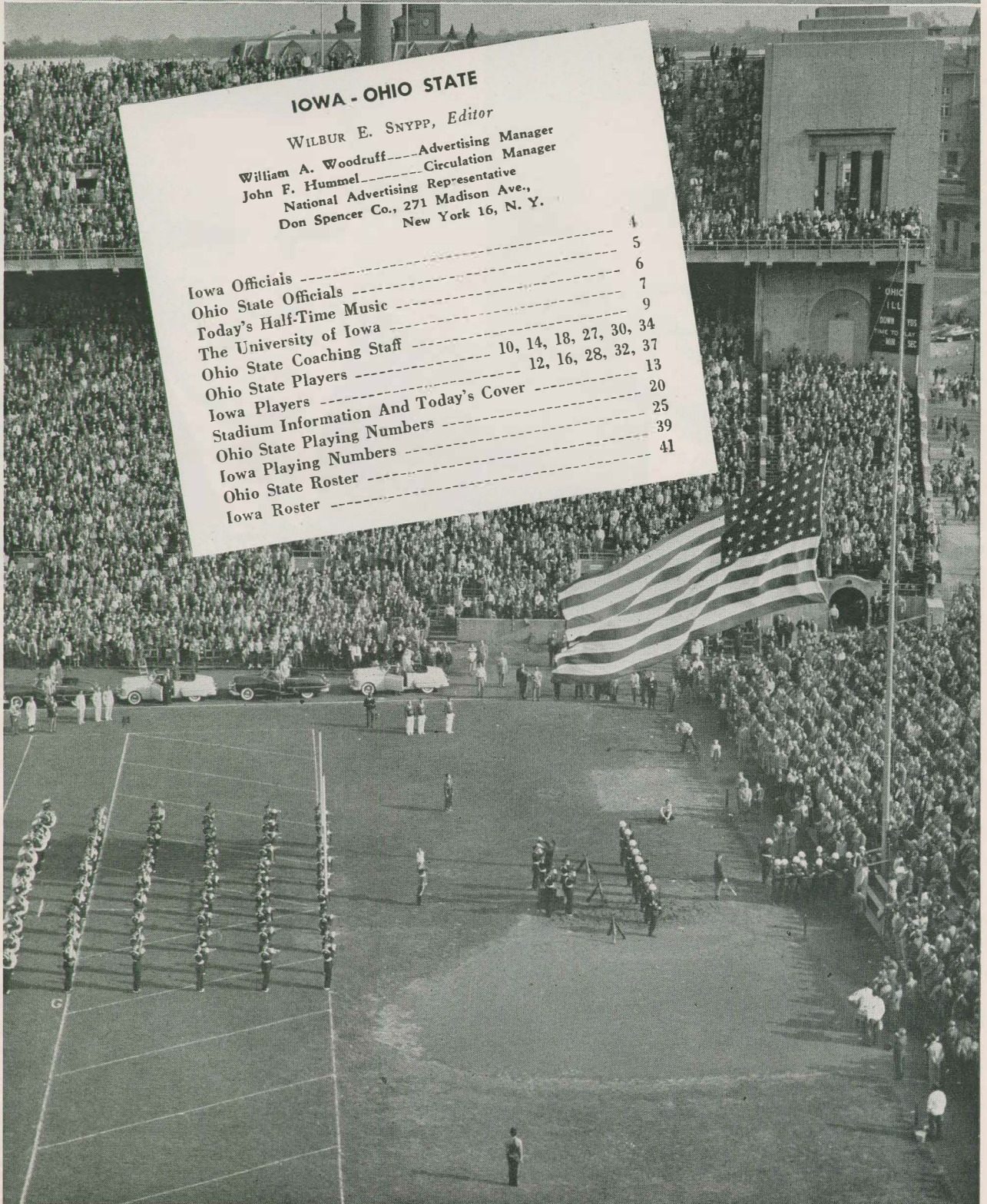
## IOWA - OHIO STATE

WILBUR E. SNYPP, Editor

William A. Woodruff.....Advertising Manager  
John F. Hummel.....Circulation Manager

National Advertising Representative  
Don Spencer Co., 271 Madison Ave.,  
New York 16, N. Y.

Iowa Officials .....	4
Ohio State Officials .....	5
Today's Half-Time Music .....	6
The University of Iowa .....	7
Ohio State Coaching Staff .....	9
Ohio State Players .....	10, 14, 18, 27, 30, 34
Iowa Players .....	12, 16, 28, 32, 37
Stadium Information And Today's Cover .....	13
Ohio State Playing Numbers .....	20
Iowa Playing Numbers .....	25
Ohio State Roster .....	39
Iowa Roster .....	41





# ***Iowa University Officials***





---

---

# *The University of Iowa*



With a tradition deep in the roots of early Iowa history, the State University of Iowa today is one of the great state universities of the midwest, a testimonial to the remarkable foresight and ingenuity of the pioneers of the prairie.

Located in Iowa City on the hills and in the wandering valley of the Iowa River, the campus was once the site of Indian teepees, settlers' shacks and covered wagon caravans wending their ways toward the promised land to the west.

In the midst of the confusion and unrest of a nation on the move, the settlers of what is now the state of Iowa saw the need for an institution of higher learning. As early as 1838, the assembly of the Territory of Iowa petitioned the central government for money and land for the establishment of a "Territorial University."

So, it was only two months after Iowa became a state in December of 1846 when the University of Iowa was founded. Both were created out of the unbroken prairie, and the alertness and vigor of its early settlers.

Today Old Capitol building, sentimental symbol of the university to thousands of graduates and students, stands on the campus as a tribute to the foresight of the pioneers. Its cornerstone was laid in 1840, and after serving as the first capitol of the young state, it was turned over to the University of Iowa in 1857. Today it serves as the principal administrative building of the institution.

Where Old Capitol once looked across the wilderness, streams of young men and women now move to and from classes. The enrollment reached a peak of almost 11,000 following the war.

The University of Iowa was one of the pioneers in the education of women, and the liberality which led the school to attempt that experiment continues today. It was the first to accept creative work as a thesis for an advanced degree in fine arts, and has been a leader in tailor-making educational programs which cut across traditional departmental lines for the student whose in-

terests and abilities make such programs educationally sound.

This willingness to pioneer is illustrated especially well in the field of speech pathology. Students in speech correction at Iowa study in the colleges of medicine and dentistry, the school of social work, the departments of speech, psychology and physics, the student counseling office and the reading clinic as they delve into every phase of imperfect speech. With this sort of cooperation the University of Iowa has kept its position as the leading speech pathology and teacher-training center in the nation.

The atmosphere of freedom and the urge to experiment with the new and better also shows up in the School of Religion, which pioneered in the principle of inter-faith teaching. On the faculty of the school are representatives of the Jewish, Protestant and Catholic faiths who are paid for their work by those faiths. The University pays the administrative costs of the school.

In the beginning the physical plant of the University of Iowa was composed only of the Old Capitol building and the ten acres of ground on which it stood. Today it overlooks more than 685 acres of campus, divided by the meandering Iowa River, and more than 60 principal buildings.

The portion of the campus west of the river is dominated by the State University of Iowa medical center with its 700-bed General Hospital, the Children's Hospital, Psychopathic Hospital, and the Medical Laboratories Building. Citizens of Iowa come from all over the state to the center seeking treatment and they receive it, whether they have money to pay for their care or not.

On the west bank of the Iowa River is the fine arts campus, with its two striking structures, the Art Building and the University Theatre. The theatre is one of the best-equipped in the country, amateur or professional, and the University's work in the whole field of fine arts has attracted nationwide attention.

The University of Iowa now has ten colleges—liberal arts, law, commerce, education, medicine, nursing, dentistry, engineering, pharmacy, and graduate—and four schools—journalism, fine arts, religion, and social work. More than 1,300 courses are taught within the 67 departments.



# TELLINGS

The  
Quality  
Ice Cream

245 E. Town St.

AD. 2171



Quality

Preparation

Service



## The Sunday Creek Coal Company

Outlook Building • Columbus, Ohio  
Producers • Shippers  
SUNDAY CREEK • SUN-KING  
SUNDALIA COALS

There's Only One

## THE CLARMONT

684 So. High Street

*Famous For*

BROILED STEAKS

FRIED CHICKEN

SEAFOODS

Vivian At The Hammond

AMPLE PARKING

SPALDING  
SPOT-BILT

GOLDSMITH

O'SHEA  
MacGREGOR

# Smith & Lee

ATHLETIC EQUIPMENT

120 E. Broad—Future Location: Town and Country, in mid-October

Columbus



## OHIO STATE COACHING STAFF



Front row, left to right: Gene Fekete, head freshman coach; Bo Schembechler, assistant freshman coach; Bill Arnsperger, tackle coach; Bill Hess, guard coach. Back row: Doyt Perry, backfield coach; Harry Strobel, defensive line coach; W. W. (Woody) Hayes, head coach; Esco Sarkkinen, end coach; Ernie Godfrey, assistant line coach.

# Isalys

Specialize in Good Health by Shopping at Those Dairy Specialists

## ISALYS

**ICE CREAM!**

**DAIRY PRODUCTS!**

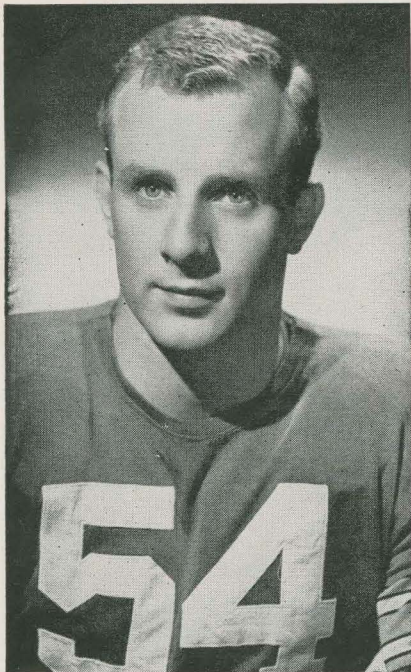
**LUNCHES!**

*When YOU Buy Ice Cream  
Buy The BEST!*

**400 Stores in Ohio,  
Pennsylvania, West Virginia**

**Dairy Specialists  
34 Dairy Stores in Columbus**

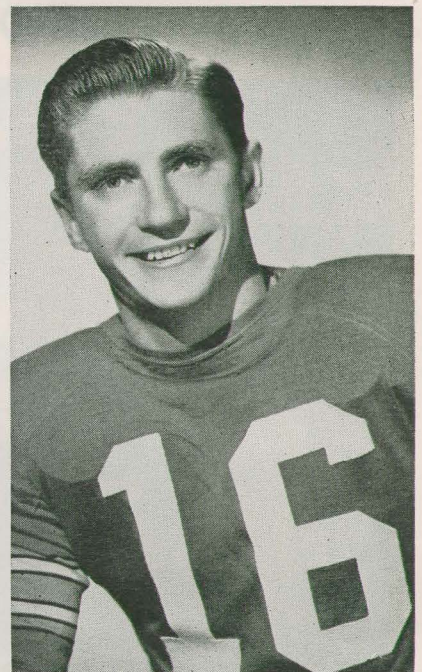




**CAPT. ROBERT HEID**  
Center



**VIC JANOWICZ**  
Halfback



**WALTER KLEVAY**  
Halfback

## ***Ohio State Players***

*Photos by House of Portraits*



**RICHARD LOGAN**  
Tackle



**SHERWIN GANDEE**  
End



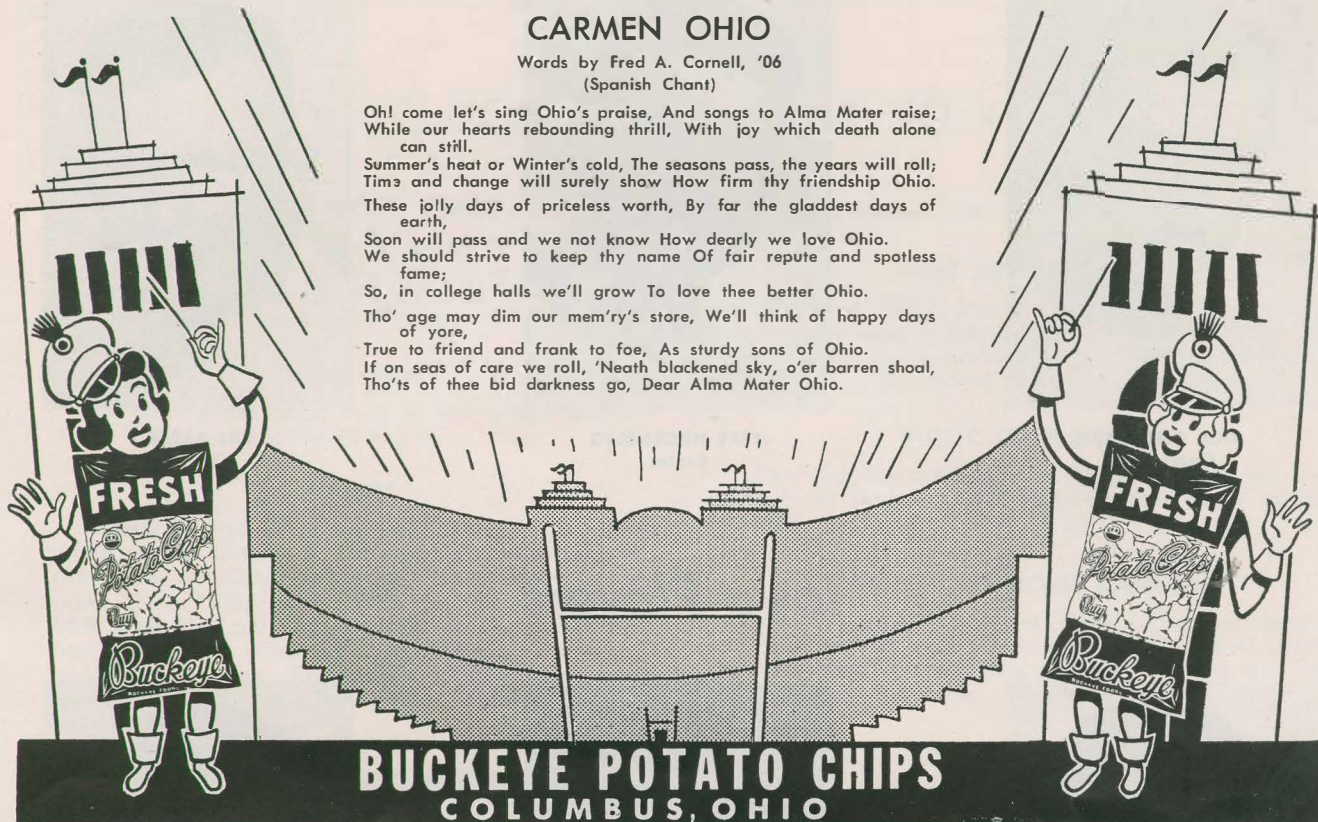
**TONY CURCILLO**  
Quarterback



## CARMEN OHIO

Words by Fred A. Cornell, '06  
(Spanish Chant)

Oh! come let's sing Ohio's praise, And songs to Alma Mater raise;  
While our hearts rebounding thrill, With joy which death alone  
can still.  
Summer's heat or Winter's cold, The seasons pass, the years will roll;  
Times and change will surely show How firm thy friendship Ohio.  
These jolly days of priceless worth, By far the gladdest days of  
earth,  
Soon will pass and we not know How dearly we love Ohio.  
We should strive to keep thy name Of fair repute and spotless  
fame;  
So, in college halls we'll grow To love thee better Ohio.  
Tho' age may dim our mem'ry's store, We'll think of happy days  
of yore,  
True to friend and frank to foe, As sturdy sons of Ohio.  
If on seas of care we roll, 'Neath blackened sky, o'er barren shoal,  
Tho'ts of thee bid darkness go, Dear Alma Mater Ohio.



# Leckie

**COAL COMPANY, Inc.**

COLUMBUS, OHIO



*Miners and Shippers*

POCAHONTAS

NEW RIVER

WEST VIRGINIA and KENTUCKY

## COAL

SAFETY      COURTESY      SERVICE

## GREEN CABS

ADams 4141



## HILL CABS

MAin 1313



## RADIO CABS

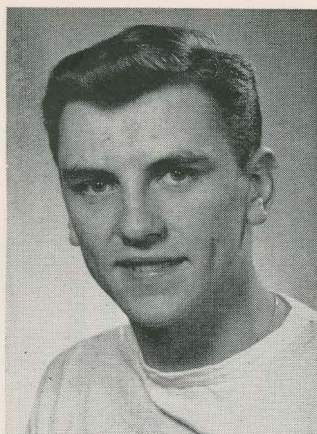
ADams 2222



## NORTHWAY CABS

UNIVERSITY 1191

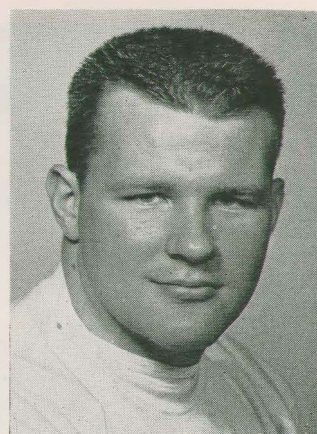




**DICK GLEICHMAN**  
Quarterback

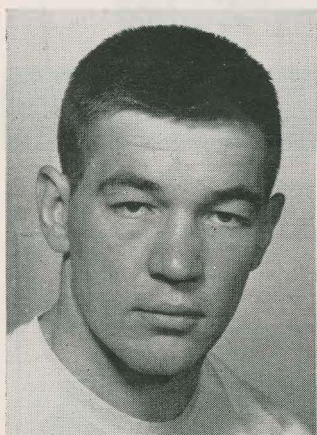


**JERRY HILGENBERG**  
Center

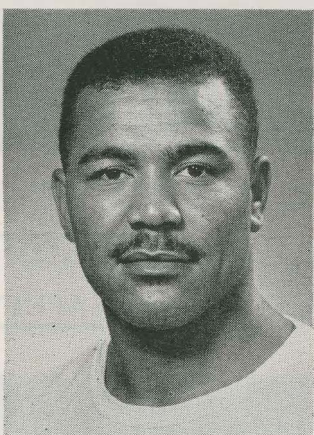


**BILL BAEHR**  
Guard

## *Iowa Players*



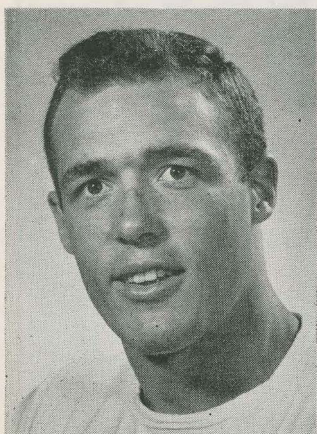
**ANDY BUNTZ**  
Tackle



**DON COMMACK**  
Halfback



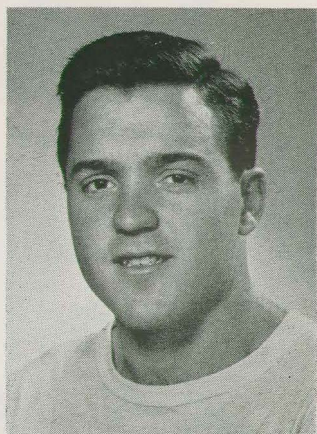
**LORANZIE WILLIAMS**  
Halfback



**JOHN TOWNER**  
Center



**DON BJORK**  
End



**JIM SANGSTER**  
Quarterback



---

## THINGS YOU MIGHT WANT TO KNOW

### STADIUM TICKET OFFICE

The Athletic Ticket Office is located in the southeast tower of the Stadium. It is open from 9 a. m. to 4:30 p. m. Monday through Friday and 9 a. m. to 12 noon, on Saturday. The Ticket Office telephone number is KL. 1637.

### GAME TIME

All home games begin at 2 p. m. Eastern Standard Time. Gates are opened at 12:30 p.m.

### TICKETS

Tickets, if available, are on sale at the various ticket booths to the north, east and south of the stadium. No tickets may be purchased on game Saturdays except at the ticket booths. There is no game day sale in the ticket office. The "will call" window is located in the ticket office. No business relative to future games is transacted on the day of a game. Requests for tickets to future games should be directed to the Ticket Office, Stadium, Ohio State University.

### LOST AND FOUND ARTICLES

A lost-and-found department is maintained at the Ticket Office until after the game. Losses should be reported at this office and articles found should be turned in there or

to an usher. Address inquiries to the Athletic Ticket Office.

### FIRST AID STATIONS

Emergency medical treatment is available in special first aid quarters back of Sections 11 and 12 in "B" deck. A mobile station also is available on the ground at the northwest section of the stadium under "A" deck.

### PUBLIC TELEPHONES

Pay telephones are located on the ground floor and also outside the ticket office at the south east corner of the stadium.

### RADIOS AND MOVIE CAMERAS

Western Conference rules forbid spectators having either portable radios or movie cameras in the stands. These may be checked in the Ticket Office and claimed upon departure from the game.

### PUBLIC ADDRESS ANNOUNCEMENTS

No announcements are ever made over the Stadium public address system except under the gravest circumstances, such as serious illness or accident. Kindly refrain from requesting this service.

---

## TODAY'S PROGRAM COVER—BROWNING AMPHITHEATRE

Situated in Mirror Lake Hollow, Ohio State University's Browning Amphitheatre is the scene of the traditional Shakespearean presentations each spring by the Browning Dramatic Society, oldest existing student organization on the campus.

The Greek open-air theatre was completed in 1926 at a cost of \$25,000. A major share of funds for the project were raised by members and alumnae of the Society, who began their campaign in 1923.

The stone structure has a 75-foot stage, a parterre, and a seating section made up of deep grass terraces. In keeping with the Greek style are its stone balustrade, urns and benches.

At the dedication ceremonies for the amphitheatre in 1926, old Browning Society records, including a picture of the first organization, newspaper clippings reporting the campaign for the theatre, and other items, were enclosed in a steel box and sealed into a stone column at the right of the stage.

Those who led in the campaign for the structure included Laura Thomas Walradt, chairman of the theatre committee until its completion; Helen Zeller Gardiner, campaign chairman; Frances Lorscheter, chairman of the committee on finances, and Mrs. Elsie Coates Kittle, Browning coach.

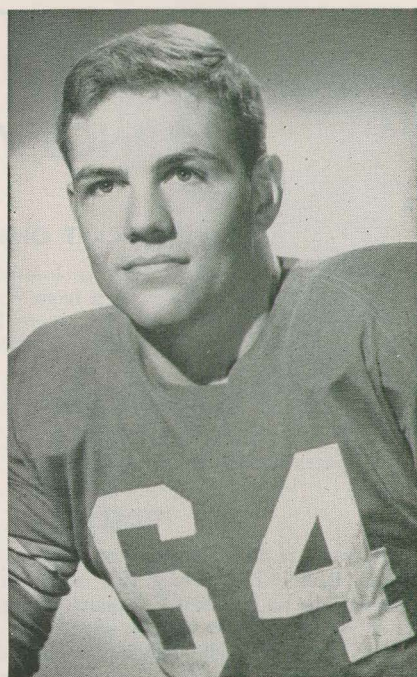




**LAWRENCE ANDREWS**  
Center



**RALPH ARMSTRONG**  
End



**THOR RONEMUS**  
Guard

## *Ohio State Players*

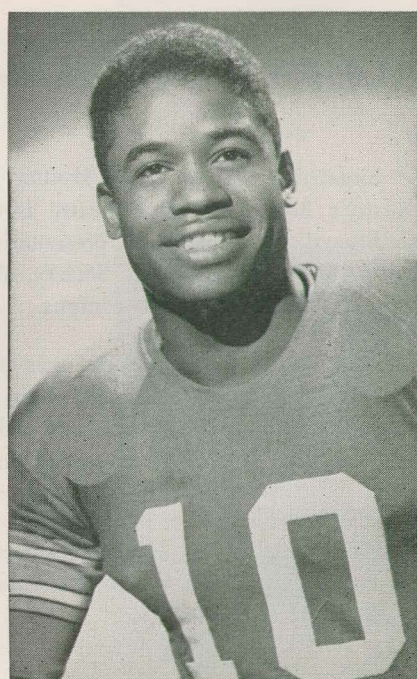
*Photos by House of Portraits*



**JAMES REICHENBACH**  
Guard



**JOHN MANYAK**  
End



**RAY HAMILTON**  
Halfback-End



## Yea Ohio State!

Enjoy the game . . . then enjoy  
the best treat of all . . .

Lady Borden  
**ICE CREAM**



**It's the best Ice Cream  
In any town!**

Your favorite flavor . . . in the famous Burgundy package  
. . . at all Borden's Moores & Ross and Furnas dealers.

JOHNNY FLESCH'S

## MEADOWBROOK

# Inn

Finest Food and Mixed Drinks  
**CHICKEN • FILET MIGNON  
CHOICE STEAKS  
DELICIOUS CHOPS  
SEA FOODS**

Dinner Served Until Midnight  
Open Until 1 A.M. Daily  
2:30 A.M. Saturdays

**4785 E. Broad at Hamilton Rd.**

15 Minutes from Broad and High  
DOuglas 1228 • DOuglas 0224

*Reservations for  
Parties, Banquets, Weddings—  
Private Party Rooms Available*

OFFICIAL WATCH FOR THIS GAME



# Longines



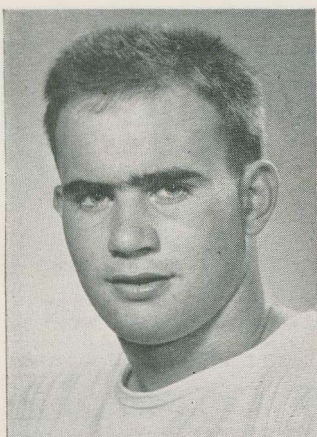
## The World's Most Honored Watch

ACCEPTED AS OFFICIAL WATCH  
FOR TIMING  
CHAMPIONSHIP SPORTS EVENTS  
IN ALL FIELDS ALL OVER THE WORLD

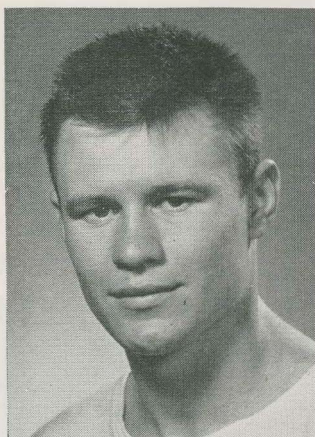
*Product of  
Longines-Wittnauer Watch Company*



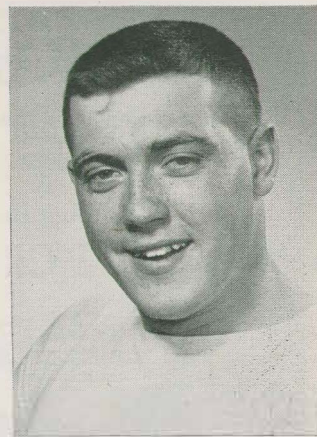




DICK FRYMIRE  
Guard

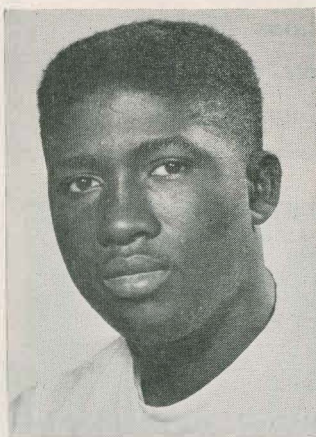


GERALD NORDMAN  
Fullback

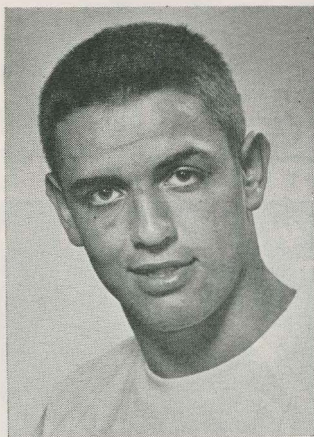


CHARLES BOOTHE  
Guard

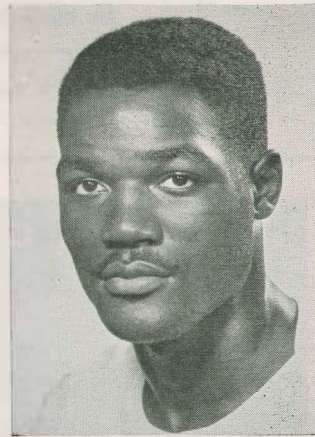
## *Iowa Players*



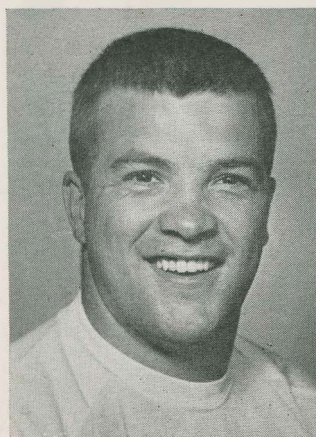
BERNARD BENNETT  
Halfback



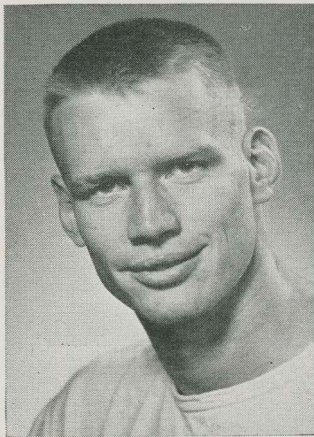
BILL FENTON  
End



DEL CORBIN  
End



PETE SPANJERS  
Tackle



DICK MEYER  
End



FRED RUCK  
End



# *Let Us Carry the Ball*

**FOR ALL YOUR PRINTING NEEDS**

Modern Equipment in the Hands of Skilled Craftsmen assure you a quality product with Economical Production thru Specialization.

- ★ COLLEGE AND HIGH SCHOOL ANNUALS
- ★ PROGRAMS, BOOKLETS—CATALOGS
- ★ MULTI-COLOR PRINTING—PAMPHLETS
- ★ PUBLICATIONS AND TRADE JOURNALS



*We Invite Your Inquiries—*

## **SPENCER-WALKER PRESS**

*Printers of the O.S.U. Football Programs*

32-40 WARREN ST.

UNiversity 4185

COLUMBUS 8, OHIO

## **FOLLOW THE CLEVELAND BROWNS**

OVER

# WGLT

**NEWARK, OHIO  
AM & FM**

### **LEAGUE GAMES**

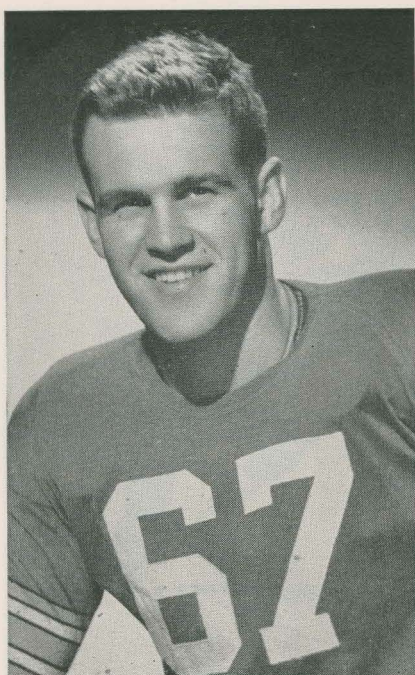
Sunday, Sept. 30	5:30 P.M.	San Francisco 49ers	*Sunday, Nov. 11	2:00 P.M.	Philadelphia Eagles
Sunday, Oct. 7	5:00 P.M.	Los Angeles Rams	Sunday, Nov. 18	2:35 P.M.	New York Giants
*Sunday, Oct. 14	2:00 P.M.	Washington Redskins	*Sunday, Nov. 25	2:00 P.M.	Chicago Bears
*Sunday, Oct. 21	2:00 P.M.	Pittsburgh Steelers	*Sunday, Dec. 2	2:00 P.M.	Chicago Cardinals
*Sunday, Oct. 28	2:00 P.M.	New York Giants	Sunday, Dec. 9	2:00 P.M.	Pittsburgh Steelers
Sunday, Nov. 4	2:30 P.M.	Chicago Cardinals	Sunday, Dec. 16	2:00 P.M.	Philadelphia Eagles

\*Home Games—Cleveland Stadium

**AM  
1430**

**FM  
100.3**

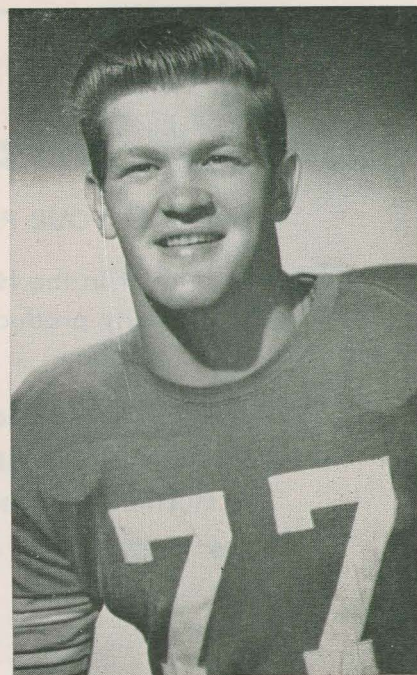




**JULIUS WITTMAN**  
Tackle



**JACK WAGNER**  
Fullback



**ROBERT ENDRES**  
Tackle

## ***Ohio State Players***

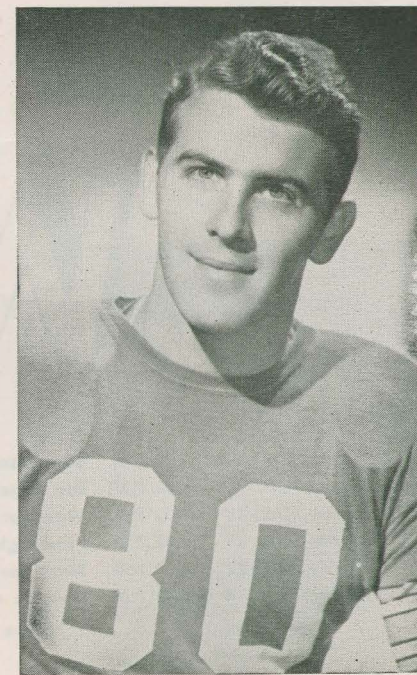
*Photos by House of Portraits*



**RICHARD ARLEDGE**  
Quarterback



**RICHARD WALTHER**  
End



**ROBERT GRIMES**  
End





**T**HE cool green of a thick Scott Lawn will add charm to your home and zest to your outdoor living. Easy to achieve when you follow the suggestions in **LAWN CARE** and use the products developed by **Scott's Lawn Research**.

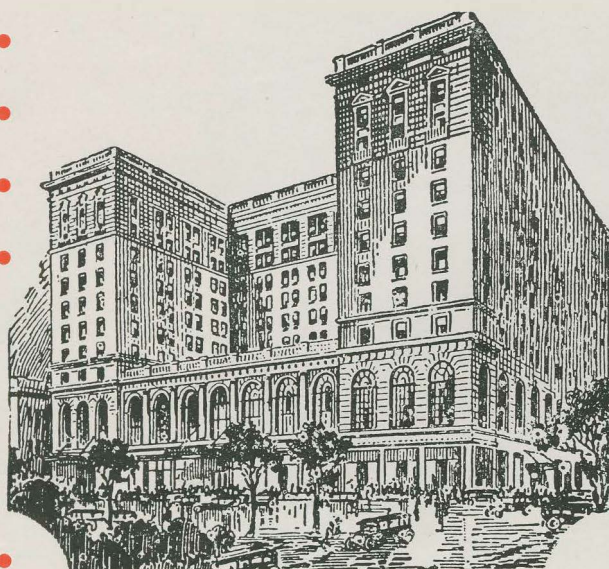
Scott Lawns set the pace from Maine to California—you ought to have one.

**O M Scott & SONS CO**  
*Seedsman since 1870 at Marysville, Ohio*

Also Ridgefield, N. J. — Palo Alto, California



Line up your football  
week-end at



## The NEIL HOUSE

Noted for Hospitality . . . for Food . . .  
Outstanding Service

655 rooms with bath—fireproof garage

Cocktail Lounge      Coffee Shop and Grill

After the game, visit The TOWN  
and COUNTRY ROOM for the best  
Dining, Dancing, and Entertain-  
ment.

*Private parties arranged on  
short notice.*

**Harry L. Ludwig,**

President and Managing Director

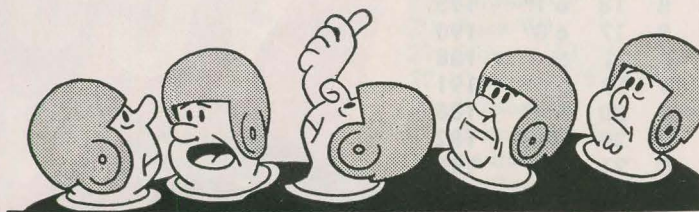
## Ohio State University

### Playing Numbers

No.	Name	Pos.
10	*Hamilton, Ray	RE
11	Ernst, Richard	HB
12	*Bruney, Fred	LH
14	Gentile, Earle	LH
16	*Klevay, Walter	RH
17	Bruce, Earle	HB
19	Howell, Carroll	HB
20	Borton, John	HB
22	Leggett, David	QB
23	Arledge, Richard	QB
24	Hague, Tom	QB
25	*Curcillo, Tony	QB
27	Stevenson, Dan	QB
28	Wilks, William	QB
30	*Wagner, Jack	F8
31	*Janowicz, Victor	LH
32	Bechtel, Earl	FB
33	*Koeppnick, Robert	FB
34	Moritz, Roger	FB
36	*Hlay, John	FB
38	Feinthal, Kenneth	E
40	Hoffman, James	FB
42	Goodsell, Doug	HB
43	Gambill, David	RH
44	*Skvarka, Bernie	LH
45	Watkins, Robert	FB
47	Rosso, George	HB
48	Beekley, Marts	LH
49	Riley, George	HB
51	Krisher, Jerry	C
52	Andrews, Lawrence	C
53	Merrell, James	C
54	*Heid, Robert (Capt.)	C
55	*Rath, Thomas	C
60	*Ruzich, Steve	RG
61	*Fischer, Louis	RG
62	Takacs, Michael	LG
63	Reichenbach, James	G
64	*Ronemus, Thor	RG
65	*Smith, Carroll	LG
66	Roberts, Robert	G
67	*Wittman, Julius	RT
69	Leo, Thomas	G
71	*Logan, Richard	RT
73	Jacoby, George	T
74	Guthrie, George	LT
75	*Hietikke, James	LT
77	Endres, Robert	RT
79	Vavroch, William	RT
80	*Grimes, Robert	RE
81	*Armstrong, Ralph	LE
83	Dugger, Dean	E
84	*Gandee, Sherwin	LE
85	Joslin, Robert	E
86	Harris, Robert	E
87	Knapic, Bernie	E
89	*Walther, Richard	RE
90	Thomas, Richard	RE
91	Manyak, John	LE
93	Katula, Ted	E
94	Shelton, John	E
96	Schiller, Richard	T

\* Letterman





"His coach used to be a jet pilot."



*Your Friendly*  
**CHRYSLER-PLYMOUTH  
DEALERS**

*Complete One Stop Service • 24-Hour Towing*

**Hugh E. Nesbitt '14**

**Harold R. Wood '31**

**McCLURE  
NESBITT**

**MOTOR CORP.**

**1505 E. Main St.**

**WOOD  
NESBITT**

**INC.**

**611 E. Broad St.**

**Tune in every Saturday after the game  
"Football Roundup"  
6:30 P.M. WBNS-TV—Ch. 10**



## OHIO STATE SQUAD

10—Hamilton '52	E	21	6'	178
11—Ernst '54	B	19	5'9"	169
12—Bruney '53	B	19	5'11"	161
16—Klevay '52	B	21	5'9"	164
19—Howell, '55	B	18	5'9"	167
20—Borton, '55	B	18	6'1"	195
22—Leggett, '55	B	17	6'0"	190
23—Arledge '52	B	21	6'	188
24—Hague '54	B	19	6'	191
25—Curcillo '53	B	20	6'1"	188
28—Wilks '53	B	20	6'2"	182
30—Wagner '52	B	21	6'1"	189
31—Janowicz '52	B	21	5'9"	186
32—Bechtel '54	B	19	6'2"	194
33—Koepnick '53	B	20	6'	185
34—Moritz '53	B	20	6'1"	200
36—Hlay '53	B	21	6'1"	212
40—Hoffman, '55	B	18	6'0"	184
42—Goodsell '55	B	18	6'2"	185
43—Gambill '53	B	20	5'11"	177
44—Skvarka '53	B	21	5'9"	184
45—Watkins '55	B	19	5'10"	182
47—Rosso '54	B	21	5'10"	172
48—Beekley '53	B	20	5'9"	181
51—Krisher '55	C	18	6'	230
52—Andrews '53	C	21	5'11"	185
53—Merrell '54	C	19	6'3"	225
54—Heid '52	C	21	6'	203
55—Rath '52	C	22	5'10"	200
60—Ruzich '52	G	21	6'2"	209
61—Fischer '53	G	21	5'10"	191
62—Takacs '54	G	21	6'	192
63—Reichenbach '55	G	18	5'10"	202
64—Ronemus '52	G	20	5'9"	186
65—Smith '52	G	22	5'11"	187
66—Roberts '54	G	19	5'11"	188
67—Wittman '52	T	21	6'1"	221
69—Leo '55	G	20	5'11"	190
71—Logan '52	T	21	6'2"	221
73—Jacoby '54	T	19	5'10"	206
74—Guthrie '53	T	19	6'1"	215
75—Hietikko '53	T	20	6'3"	220
77—Endres '52	T	21	6'1"	200
79—Vavroch '53	T	20	6'1"	210
80—Grimes '53	E	20	6'1"	194
81—Armstrong '52	E	21	6'4"	198
84—Gandee '52	E	22	6'	197
85—Joslin '54	E	20	6'	182
89—Walther '53	E	21	5'10"	191
90—Thomas '53	E	20	6'1"	183
91—Manyak '53	E	21	6'1"	188
94—Shelton, '55	E	18	6'2"	178
96—Schiller, '55	T	17	6'2"	260

SCIENCE  
DISCOVERED IT

YOU CAN  
PROVE IT-

"NO UNPI  
AFTER-  
WHEN YO  
CHESTE  
MORE COLLEGE MEN  
CHESTERFIELD THAN A





## UNIVERSITY OF IOWA SQUAD

**PLEASANT  
TASTE"**  
**U SMOKE**  
**ERFIELD**

**I AND WOMEN BUY  
ANY OTHER CIGARETTE**

10—Bjork '53  
14—Brattebo '53  
15—Leinbaugh '53  
17—Towner '52  
18—Boothe '54  
19—DaBillo '54  
20—Ruck '52  
21—Sievers '53  
22—Commack '52  
23—Wilson '52  
25—Britzmann '53  
28—Fenton '54  
29—Lindsey '54  
30—Reichardt '52  
33—Thomas '54  
34—Hess '53  
37—Johnston '52  
38—Brandt '52  
40—Sangster '52  
41—Buntz '52  
42—DeProspero '52  
43—Phillips '54  
44—Chelf '53  
45—Riley '52  
46—Clark '53  
48—Fairchild '52  
49—Broeder '55  
50—Hutchinson '53  
51—Reister '53  
52—Houg '54  
53—Bennett '53  
54—Gardner '53  
55—Williams '54  
56—Lage '52  
58—Frazer '54  
59—Swartzendruber '53  
60—Rice '54  
61—Denning '52  
62—Myers '53  
63—Lindquist '54  
64—Nordman '52  
65—Stearnes '55  
66—Bristol '52  
68—Frymire '54  
69—Petersen '52  
70—Spanjers '53  
71—Willett '54  
74—Kersten '52  
76—Corbin '53  
77—Caplan '52  
78—Turner '52  
79—Noble '53

E	20	6'2"	195
B	22	5'10"	165
B	20	5'10"	170
C	21	6'	205
G	19	6'	205
T	19	6'3½"	215
E	22	6'2"	190
T	21	6'	225
B	22	5'9"	165
B	22	5'11"	180
B	21	5'11"	168
E	19	6'3"	205
E	20	6'1"	185
B	21	5'11"	205
C	19	6'2"	205
B	20	6'	187
T	20	6'6"	240
B	21	6'1"	195
B	22	5'11"	175
T	23	6'2"	205
E	23	6'5"	220
B	19	5'11"	180
T	20	6'3"	215
B	23	6'1"	220
G	19	5'8"	195
G	21	5'10½"	215
B	18	5'8"	180
G	22	5'10"	215
B	20	6'1"	180
E	19	6'3"	195
B	19	5'10"	180
E	21	6'1"	200
B	19	5'9"	167
G	24	5'10"	190
T	20	6'2½"	220
E	21	6'2"	215
B	20	6'	178
B	22	5'11"	190
G	20	5'9"	200
T	19	6'2"	205
B	24	6'	195
B	18	5'7"	170
B	23	5'11"	185
G	19	6'2"	205
C	21	6'3½"	195
T	21	5'10½"	225
B	20	6'	175
G	24	6'	210
E	20	6'2½"	190
E	23	6'1"	190
G	22	6'1"	210
T	20	6'2"	215



**AFTER THE GAME!**



# IONIAN ROOM

2 SHOWS NIGHTLY

## FALL FESTIVAL REVUE!

IN PERSON...the nation's most popular  
TV and recording stars...singing the  
song hits of the year the way you love  
to hear them.

DANCING FROM 9:00 PM  
SHOWS AT 10:00 PM & MIDNIGHT

< OOOOO >  
**The**  
**SAPPHIRE ROOM**  
FOR LUNCHEON AND DINNER  
Dinner Music 6:30-8 PM  
No Tax

### OHIO STATE HOME GAMES

SOUTHERN METHODIST	Sept. 29th
MICHIGAN STATE . . . .	Oct. 6th
INDIANA . . . . .	Oct. 20th
IOWA . . . . .	Oct. 27th
NORTHWESTERN . . . .	Nov. 3rd
ILLINOIS . . . . .	Nov. 17th

*The Deshler* - WALLICK • COLUMBUS

PALMER R. SUDDABY, GENERAL MANAGER



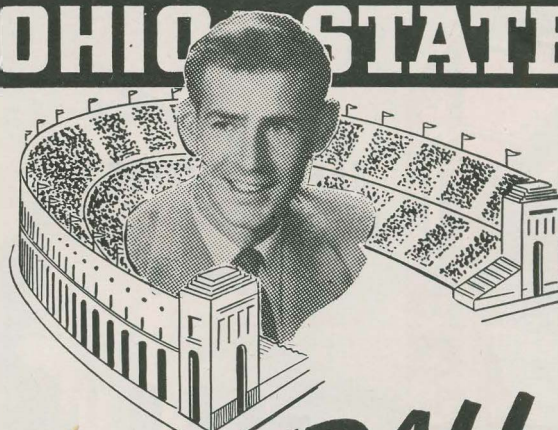
# University of Iowa

## Playing Numbers

No.	Name	Pos.
10	Bjork, Don	E
14	Brattebo, Dick	B
15	Leinbaugh, Lyle	B
17	Towner, John	C
18	Boothe, Charles	G
19	DaBillo, Lloyd	T
20	Ruck, Fred	E
21	Sievers, Jack	T
22	Commack, Don	B
23	Wilson, Robert	B
25	Britzmann, Burt	B
28	Fenton, Bill	E
29	Lindsey, Jack	E
30	Reichardt, Bill	B
33	Thomas, Fred	C
34	Hess, Jack	B
37	Johnston, Hubert	T
38	Brandt, Duane	B
40	Sangster, Jim	B
41	Buntz, Andy	T
42	DeProspero, Dave	E
43	Phillips, Robert	B
44	Chelf, Don	T
45	Riley, Don	B
46	Clark, Jerry	G
48	Fairchild, Ron	G
49	Broeder, George	B
50	Hutchinson, Roy	G
51	Reister, Harold	B
52	Houg, Andy	E
53	Bennett, Bernard	B
54	Gardner, Clyde	E
55	Williams, Loranzie	B
56	Lage, Bob	G
58	Frazer, Jim	T
59	Swartzendruber, Don	E
60	Rice, George	B
61	Denning, Charles	B
62	Myers, George	G
63	Lindquist, Bill	T
64	Nordman, Gerald	B
65	Stearnes, Bob	B
66	Bristol, Joe	B
68	Frymire, Dick	G
69	Petersen, Ron	C
70	Spanjers, Pete	T
71	Willett, Jack	B
75	Kersten, Bill	G
76	Corbin, Del	E
77	Caplan, Arnold	E
78	Turner, Austin	G
79	Noble, Dudley	T

\* Indicates Letters

# OHIO STATE



## FOOTBALL

with  
**JACK BUCK**

every Saturday 1:50 P.M.

sponsored by

### YOUR KAISER-FRAZER DEALER

## FOOTBALL LINE-UP

### 12:45—FOOTBALL TIME

Sponsored by Earl Sarver, Inc.

### 1:00—BUCK TALKS FOOTBALL

Sponsored by Bexley Mercury, Inc.

### 1:15—PIGSKIN SALUTE

Sponsored by Decca Records

### 1:30—COACHES PREVIEW

Sponsored by Big Bear Stores

### 1:50—OSU FOOTBALL GAME

### 4:30—COACHES REVIEW

Sponsored by Stewart-Warner  
Television

### 4:45—NOTES & SCORES

### 5:30—FOOTBALL SCOREBOARD

Sponsored by B & T Carpet Co.

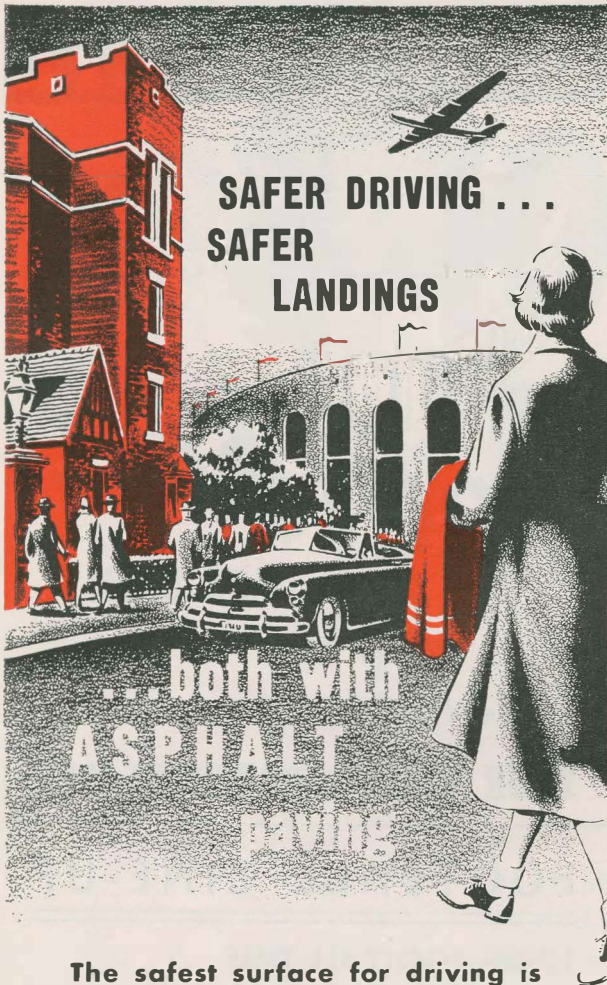
AM  
1230

# WCOL

FM  
92.3

"Wherever You Go . . . There's Radio!"





The safest surface for driving is also the safest for modern airports. Through the years, asphalt has proved to be the best and safest for both. Lower maintenance and lower first-cost both make asphalt the most economical pavement.

## OHIO ROAD IMPROVEMENT CO.

COLUMBUS, OHIO



# R. Wilke

## Makes The Team

That is, Wilke makes  
The Team a Stronger one!



Football men Like  
Wilke's meats.



We sell better meats . . .  
the kind you'll want  
on your own table.

# R. WILKE

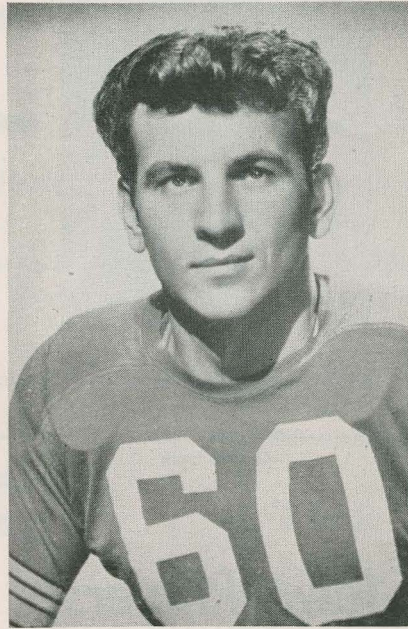
*Wholesale and Retail*

175 E. Rich St.





**JAMES HIETIKKO**  
Tackle



**STEVE RUZICH**  
Tackle



**MARTS BEEKLEY**  
Halfback

## ***Ohio State Players***

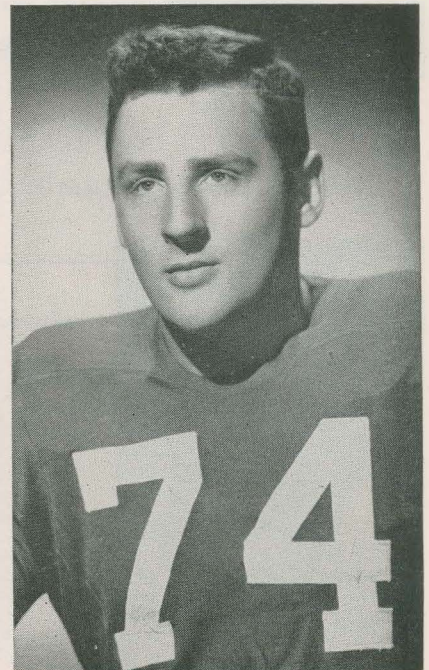
*Photos by House of Portraits*



**JOHN HLAY**  
Fullback

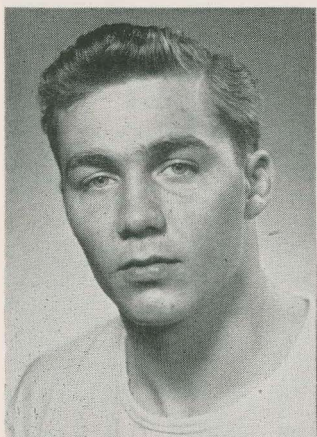


**RICHARD THOMAS**  
End

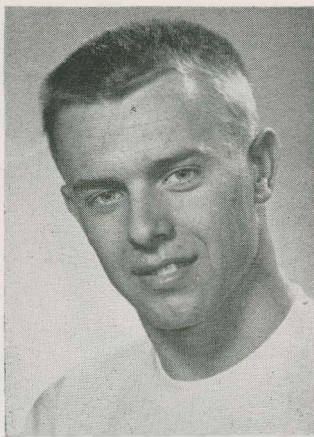


**GEORGE GUTHRIE**  
Tackle

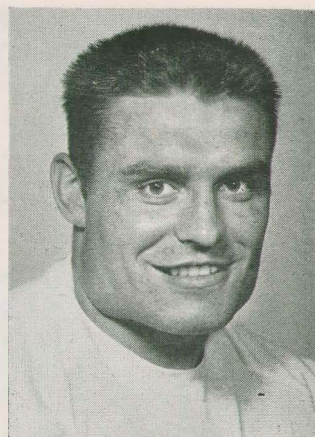




**BOB McCLOSKEY**  
Guard

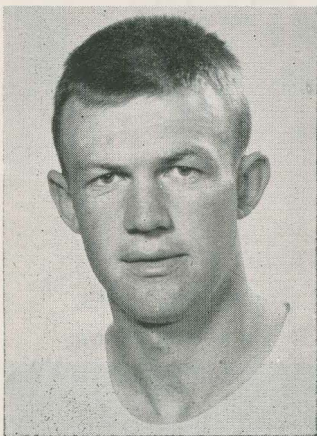


**BURT BRITZMANN**  
Quarterback

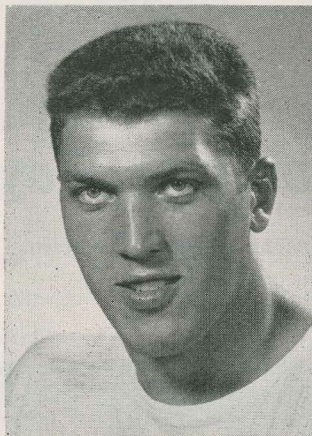


**BOB LAGE**  
Guard

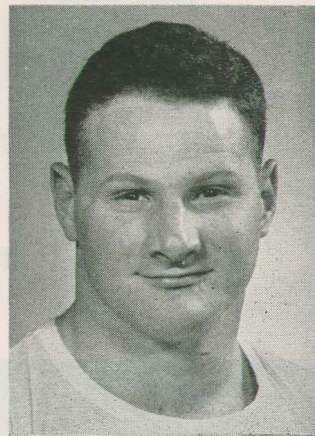
## *Iowa Players*



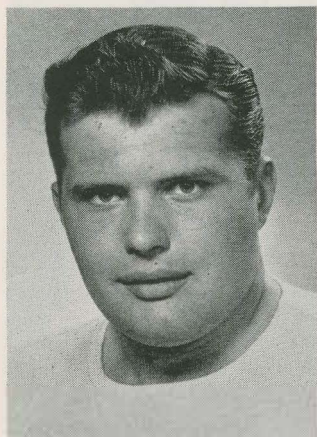
**DUANE BRANDT**  
Halfback



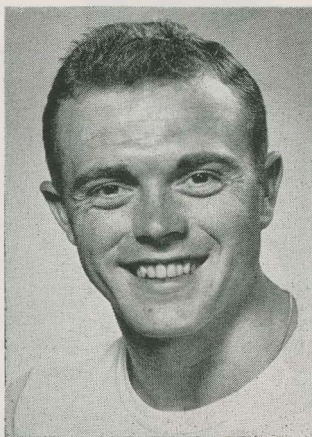
**HUBERT JOHNSTON**  
Tackle



**ARNOLD CAPLAN**  
End



**HARRY SIEVERS**  
Tackle



**CLYDE GARDNER**  
End



**CHUCK DENNING**  
Halfback



# CENCI on 5th Ave.

*The Restaurant known for famous steaks*

**Room for Private Parties**

**Our Motto Is Quality and There Is No Substitute**

**OUR APPETIZERS AND COCKTAILS ARE DELICIOUS—TRY ONE BEFORE DINNER**

**1773 W. Fifth Ave.**

**Kl. 0148 or Kl. 3713**

## THREE YEARS IN THE FUTURE FOR IOWA FOOTBALL

### 1952

Sept. 27—Pittsburgh at Pittsburgh  
Oct. 4—Indiana at Bloomington  
Oct. 11—Purdue at Lafayette  
Oct. 18—Wisconsin at *Iowa City*  
Oct. 25—Ohio State at *Iowa City*  
Nov. 1—Minnesota at Minneapolis  
Nov. 8—Illinois at *Iowa City*  
Nov. 15—Northwestern at Evanston  
Nov. 22—Notre Dame at *Iowa City*

### 1953

Sept. 26—Michigan State at *Iowa City*  
Oct. 3—Washington State at *Iowa City*  
Oct. 10—Michigan at Ann Arbor  
Oct. 17—Wyoming at *Iowa City*  
Oct. 24—Indiana at *Iowa City*  
Oct. 31—Wisconsin at Madison  
Nov. 7—Purdue at Lafayette  
Nov. 14—Minnesota at *Iowa City*  
Nov. 21—Notre Dame at South Bend

### 1954

Sept. 25—Michigan State at *Iowa City*  
Oct. 2—Montana at *Iowa City*  
Oct. 9—Michigan at Ann Arbor  
Oct. 16—Ohio State at Columbus  
Oct. 23—Indiana at Bloomington  
Oct. 30—Wisconsin at *Iowa City*  
Nov. 6—Purdue at *Iowa City*  
Nov. 13—Minnesota at Minneapolis  
Nov. 20—Notre Dame at *Iowa City*

## THE HISS STAMP COMPANY



**HERMAN A. BLOOM**

*President and General Manager*

**RUBBER, BRASS AND STEEL  
MARKING DEVICES  
BRONZE TABLETS  
NUMBERING MACHINES**

**195 EAST LONG STREET  
COLUMBUS, OHIO**

**TELEPHONE Main 4343**

**ALL LINES**

## THE JOHN H. MAHON CO.

**INSURANCE UNDERWRITERS**

**PARKING AT THE REAR**

**659 EAST BROAD ST.**

**COLUMBUS, OHIO**

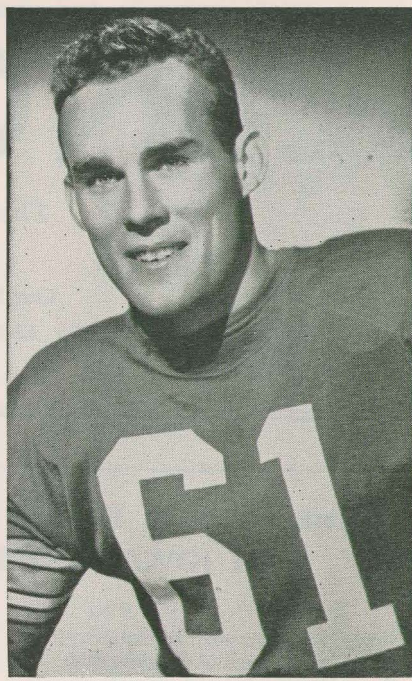




**JOHN BORTON**  
Quarterback



**DOUG GOODSSELL**  
Halfback



**LOU FISCHER**  
Guard

## *Ohio State Players*

*Photos by House of Portraits*



**BERNIE SKVARKA**  
Halfback

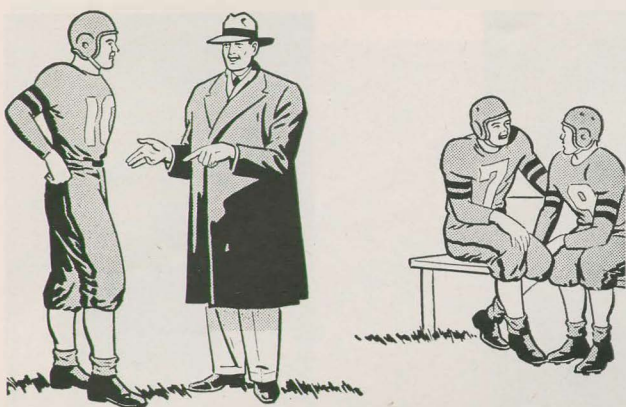


**FRED BRUNEY**  
Halfback



**ROBERT JOSLIN**  
End





## SKILLED DIRECTION

by Our Culinary Staff,  
assures Meals that Satisfy

*Mills Restaurants*

19 NORTH HIGH ST., COLUMBUS

CINCINNATI

39 EAST 4TH ST.

CLEVELAND

315 EUCLID AVE.



● Units of the Greenfield-Mills Restaurant Company, comprised of Mills Restaurants in Cleveland, Cincinnati and Columbus (2) and Greenfield's Restaurants in Detroit (2)

## THE SHAW-DAVIS CO. FUNERAL HOMES

34 W. 2nd Ave.

UN. 4155

Columbus' Newest Funeral Home  
and Chapel 4341 N. High St.

LA. 2600

LATEST CADILLAC

AMBULANCE

*Serving the Stadium  
since its inception*

Harry H. Shaw, Jr.

Robert J. Shaw

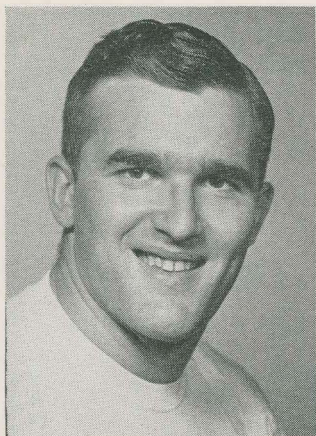


DRINK  
*Coca-Cola*  
REG. U.S. PAT. OFF.

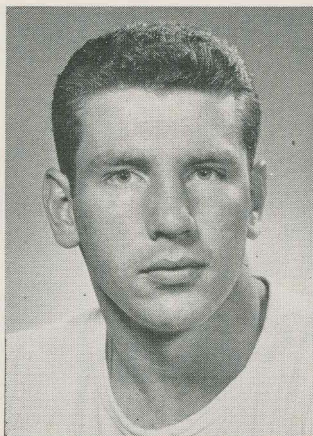
Keep fun going  
*Pause for a Coke*

Bottled Under Authority of The Coca-Cola Company by  
COCA-COLA BOTTLING COMPANY OF OHIO

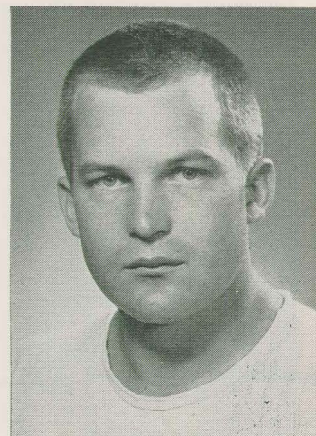




**DON SWARTZENDRUBER**  
End

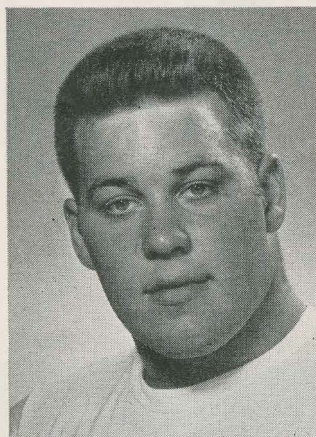


**BILL REICHARDT**  
Fullback

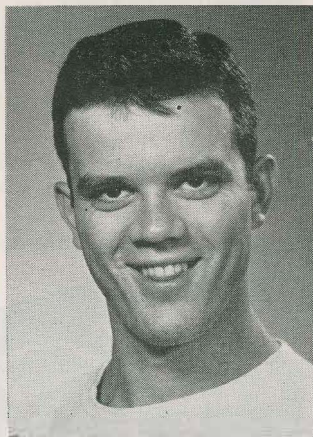


**AUSTIN TURNER**  
Guard

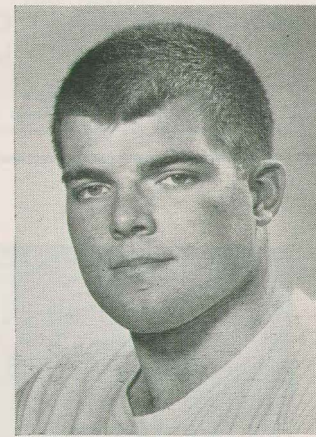
## *Iowa Players*



**RONALD FAIRCHILD**  
Guard



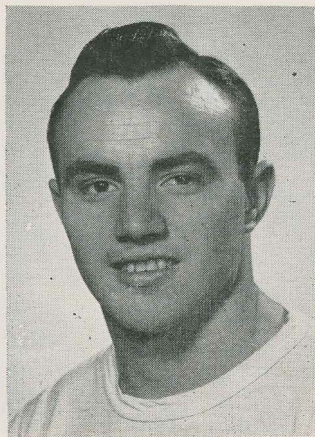
**DAVID DePROSPERO**  
End



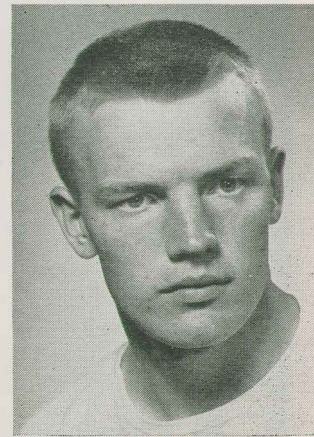
**DUDLEY NOBLE**  
Tackle



**GEORGE RICE**  
Halfback



**JOE BRISTOL**  
Halfback



**ANDY HOUG**  
End





As Time Passes—

## OHIO STADIUM

Completed 1922

Stands as Positive Evidence of the Enduring Strength Possible to Attain in Concrete by Using  
MARBLE CLIFF LIMESTONE AND MARBLE CLIFF LIMESTONE SAND

**THE MARBLE CLIFF QUARRIES CO.**  
COLUMBUS, OHIO

**modern GAS appliances...**

**Luxury**  
*for so little*

It pays to be penny  
wise when you can buy lux-  
ury for a few cents a day.

Gas appliances you have  
outlived should be re-  
placed now with modern,  
efficient equipment.

*The ohio fuel* **gas** *company* 

**ALL NEW**

## GRANDVIEW INN

1127 Dublin Rd.

*Come See The Most  
Beautiful Dining Room In Ohio*

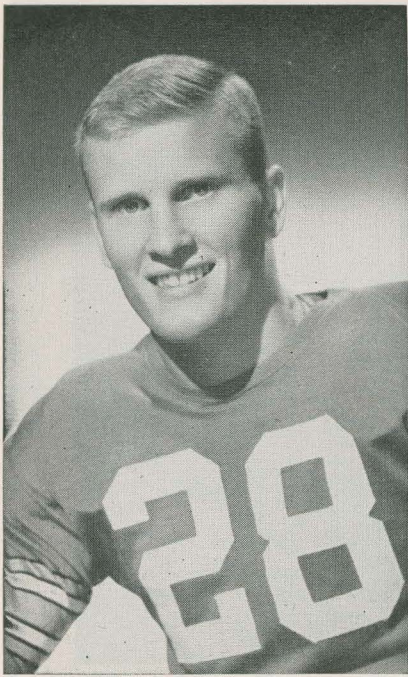
●  
***The Best Steak Dinner  
in Town***  
●

Chicken — Sea Food — Frog Legs

*All Legal Beverages*

**Open Until 2:30 A.M.**

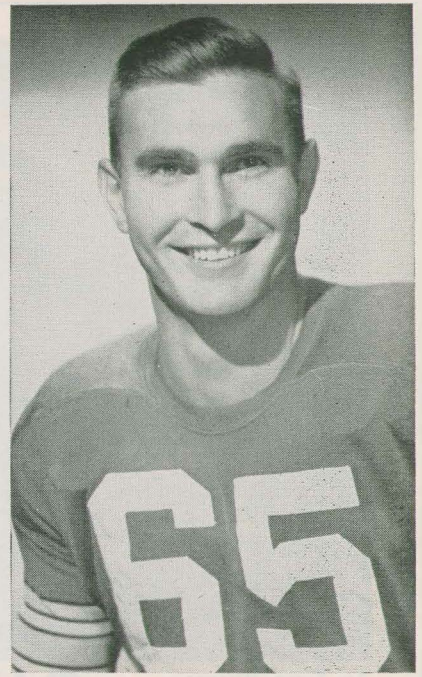




**WILLIAM WILKS**  
Quarterback



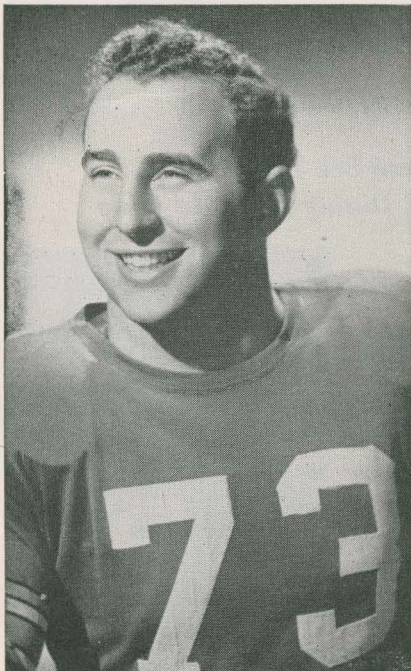
**MICHAEL TAKACS**  
Guard



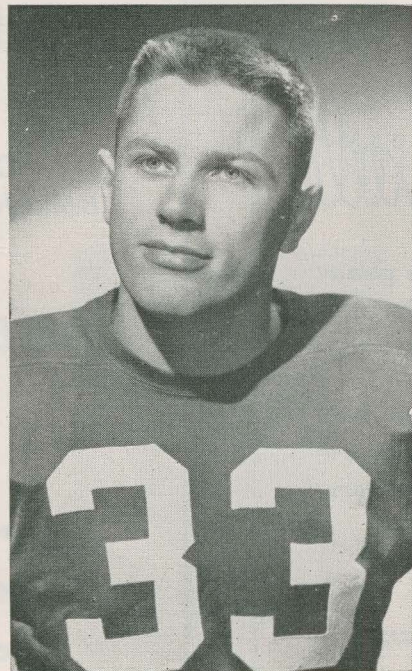
**CARROLL SMITH**  
Guard

## *Ohio State Players*

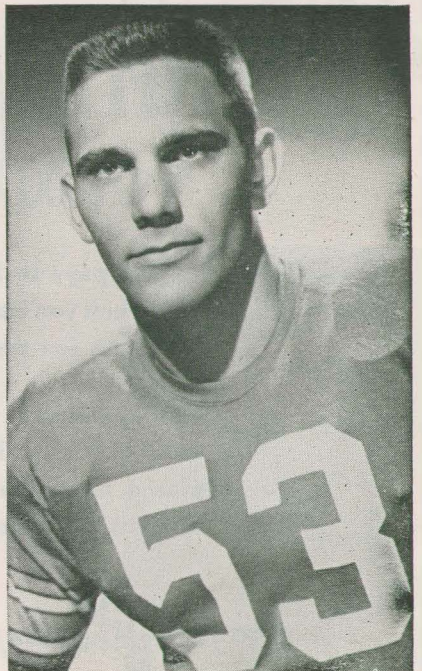
*Photos by House of Portraits*



**GEORGE JACOBY**  
Tackle



**ROBERT KOEPNICK**  
Fullback



**JAMES MERRELL**  
Center



*Stop Overnight at*

## The VIRGINIA HOTEL

(Columbus Owned and Operated)

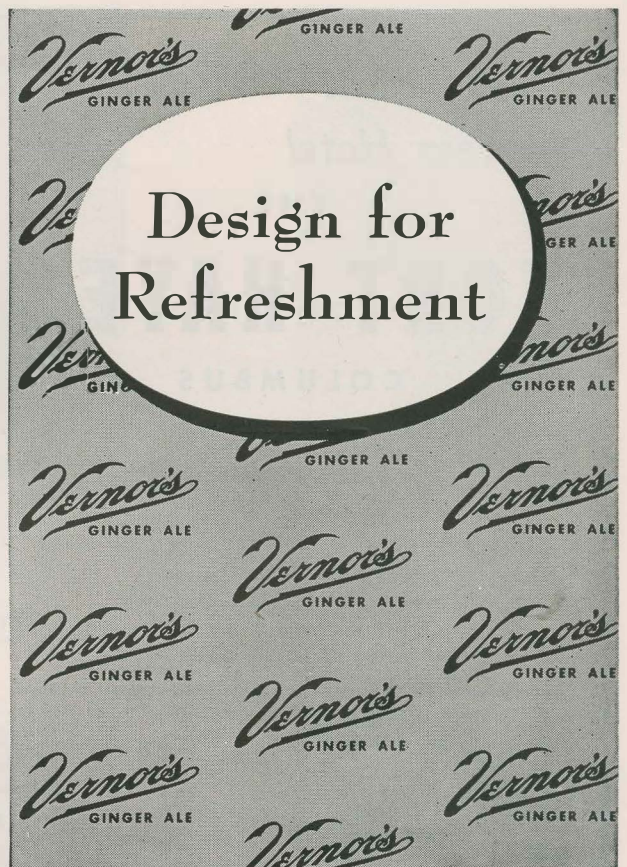
It Is One of the Nicest and Best Located  
Hotels in Downtown Columbus

**Enjoy A Bracing Cocktail In The  
Mayfair Cocktail Lounge**

A Leisurely Dinner in the Completely New Dining Room  
Ballrooms for All Business and Social Functions

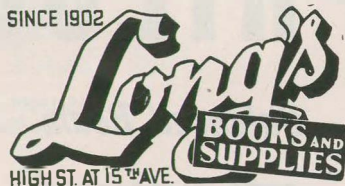
*Phone For Reservations*

MA. 3101 Bill Dunn, Manager 3rd & Gay Streets



**Design for  
Refreshment**

**A tradition on Campus  
Since 1902 . . .**



**AT THE GATEWAY TO THE CAMPUS**

## RIVERSIDE RESTAURANT

STEAKS — CHICKEN — SPAGHETTI

*Also Available For Private Parties*

**1570 Olentangy River Rd.**

**UN. 7237**

## Iowa Results in 1950

Iowa 20, Southern Cal. 14  
Iowa 7, Indiana 20  
Iowa 0, Wisconsin 14  
Iowa 33, Purdue 21  
Iowa 21, Ohio State 83  
Iowa 13, Minnesota 0  
Iowa 7, Illinois 21  
Iowa 14, Notre Dame 14 (tie)  
Iowa 6, Miami (Fla.) 14

## SMITH - STEVENS

**TAILORING CO.**

- CUSTOM TAILORING
- DRY CLEANING
- ALTERATIONS

1894 N. High at 16th Ave.

Opposite OSU

WA. 9373

Don A. Smith & John S. Stevens, Co-owners



*Ohio's Most  
Modern Hotel*

THE  
**FORT HAYES**  
COLUMBUS

350 ROOMS  
ALL WITH BATH

Mandarin Cocktail Lounge  
Attractively Appointed Coffee Shop  
Beautiful Crystal Dining Room  
All Public Rooms Air-Conditioned  
Recommended in Duncan Hines' Books, "Adventures in Good  
Eating" and "Lodging for a Night."

W. B. FLOWERS  
Manager

## Chittenden Hotel

*Home of Famous Purple Cow  
and The Oasis Cocktail Bar*

FOR FOOD AND BEVERAGES  
PRIVATE DINING ROOM—  
LARGE BALL ROOM  
BREAKFASTS, LUNCHEONS — DINNERS  
REASONABLE PRICES

The Purple Cow Coffee Shop is recommended by  
Duncan Hines in his book, "Adventures in Good Eating."

GENE BROWN  
Manager

R. I. GRIFFITH, MANAGING DIRECTOR

*Yea, Ohio*  
The  
**Wendt - Bristol Co.**

*The Prescription Store of Columbus*

### SALUTES YOU

WE WILL BE PLEASED TO SERVE YOU FOR  
ELASTIC BELTS, KNEE CAPS, ANKLETS AND  
TRUSSES, SICK ROOM SUPPLIES, SURGICAL  
INSTRUMENTS AND MICROSCOPES.

#### OUR STORES

51 E. State St.  
AD. 6018  
Main Office



721 N. High St.  
MA. 3153  
Branch Office

*We Deliver*

*Visit Our New Store*

1616 Neil Ave.

Phone WA. 7048

## PHILCO

*Balanced Beam*

TELEVISION

*Picture Blur and Smear*

ENDED FOREVER!

*See us for*

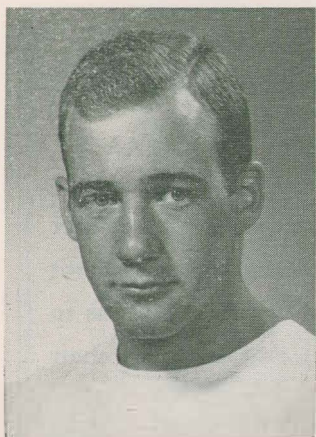
FREE HOME TRIAL

**FREAR - GIMRE**

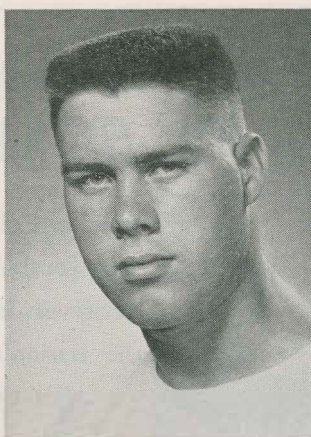
1544 Cleveland Ave.

WA. 3060

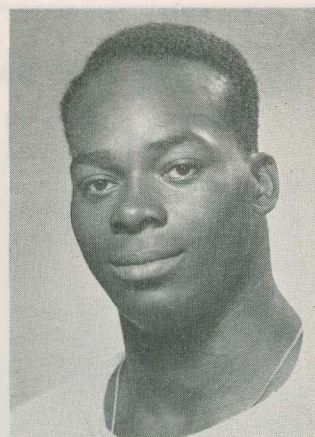




**BOB WILSON**  
Halfback

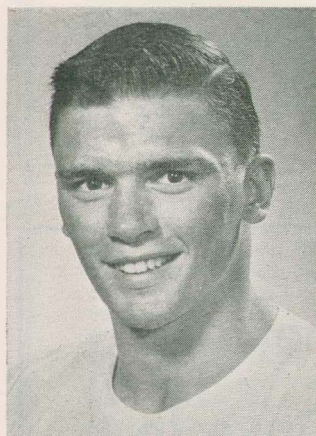


**LLOYD DeBILLO**  
Tackle

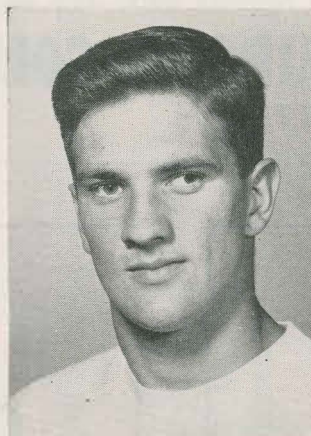


**DONALD RILEY**  
Fullback

## *Iowa Players*



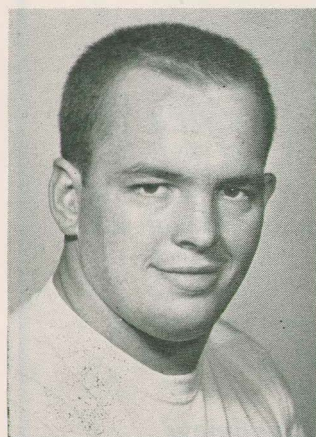
**BOB PHILLIPS**  
Halfback



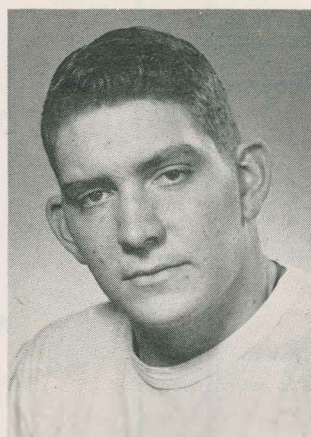
**RONALD PETERSEN**  
Center



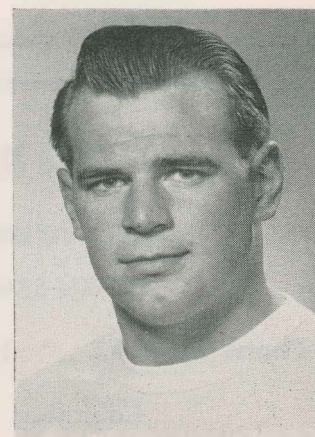
**FORREST HOUSER**  
Guard



**ROY HUTCHINSON**  
Guard



**JIM FRAZER**  
Tackle



**ART LANDAU**  
Halfback



**MARIE** (*The Body*) **MCDONALD,** *Lovely Motion Picture Star, SAYS:*  
**"THERE MAY BE SOME DISPUTE**



ADJUSTS TO ANY POSITION  
 MADE IN SIZES TO FIT YOU

even in Columbus, as to the nation's Number One football team—but there is NO argument whatever, in Columbus or anyplace else, as to the nation's most restful and relaxing chair . . . it's the

WORLD'S ONLY

**COUTOUR CHAIR** *Lounge*

*To try it . . . is to buy it!*

Don't be misled—not sold in furniture stores—sold only at

**CONTOUR CHAIRS OF COLUMBUS, INC.**

118 E. BROAD STREET

ADAMS 6245



**Del Rio  
 Restaurant**

STEAKS—SPAGHETTI

Phone KI. 0117      1276 W. 5th Ave.

Columbus, Ohio

**The  
 Circle Drive In**

*Columbus' Oldest  
 For Fine Food  
 and Quick Service*

King Ave. & Olentangy River Rd.

Another Convenient Location  
 at

5th Ave. & Broadview



# OHIO STATE UNIVERSITY ROSTER

No.	Name	Pos.	Wgt.	Hgt.	Age	Class	Home Town High School
10	**Hamilton, Ray	RE	178	5-11	21	Senior	Canton (McKinley)
11	Ernst, Richard	RH	169	5-9	19	Sophomore	Cincinnati (Withrow)
12	*Bruney, Fred	LH	166	5-11	20	Junior	Martins Ferry
16	**Klevay, Walter	RH	168	5-9	21	Senior	Independence
17	Bruce, Earle	RH	160	5-8	20	Sophomore	Cumberland, Md. (All'gh'ny)
19	Howell, Carroll	RH	167	5-9	18	Freshman	Portsmouth
20	Borton, John	LH	195	6-1	18	Freshman	Alliance
22	Leggett, David	QB	190	6-0	17	Freshman	New Philadelphia
23	Arledge, Richard	QB	194	6-0	21	Senior	Chillicothe
24	Hague, Tom	QB	191	6-0	19	Sophomore	Rocky River
25	*Curcillo, Tony	QB	188	6-1	20	Junior	Elyria
27	Stevenson, Dan	QB	182	6-2	18	Freshman	Hamilton
28	Wilks, William	QB	182	6-2	20	Junior	Hamilton (Public)
30	*Wagner, Jack	FB	189	6-1	21	Senior	Piqua
31	**Janowicz, Victor	LH	181	5-9	21	Senior	Elyria
32	Bechtel, Earl	FB	194	6-2	19	Sophomore	Fredericktown
33	*Koepnick, Robert	FB	193	6-0	20	Junior	Dayton (Chaminade)
34	Moritz, Roger	FB	200	6-1	20	Junior	Columbus (North)
36	*Hlay, John	FB	212	6'1"	21	Junior	Niles (McKinley)
38	Feinthal, Kenneth	RE	185	6-1	18	Freshman	Middletown
40	Hoffman, James	FB	184	6-0	18	Freshman	Marysville
42	Goodsell, Doug	LH	184	6-2	18	Freshman	Columbus (Upper Arlington)
43	Gambill, David	RH	177	5-11	20	Junior	Portsmouth
44	*Skvarka, Bernie	LH	180	5-9	21	Junior	Struthers
45	Watkins, Robert	FB	182	5-10	19	Freshman	New Bedford, Mass.
47	Rosso, George	RH	170	5-10	21	Sophomore	Pittsburgh, Pa. (Langley)
48	Beekley, Marts	LH	181	5-9	20	Junior	Sharonville
49	Riley, George	RH	157	5-10	18	Freshman	Newark
51	Krisher, Jerry	C	240	6-0	18	Freshman	Massillon
52	Andrews, Lawrence	C	185	5-11	21	Junior	Toledo (DeVilbiss)
53	Merrell, James	C	212	6-3	19	Sophomore	Geneva
54	**Heid, Robert (Capt.)	C	200	6-0	21	Senior	Fremont (Ross)
55	*Rath, Thomas	C	215	5-10	22	Senior	Defiance
60	*Ruzich, Steve	RG	216	6-2	21	Senior	Madison
61	*Fischer, Louis	RG	191	5-10	21	Junior	Charleston, W. Va. (Catholic)
62	Takacs, Michael	LG	202	6-0	21	Sophomore	Massillon
63	Reichenbach, James	G	210	5-10	18	Freshman	Massillon
64	*Ronemus, Thor	RG	190	5-9	20	Junior	Springfield (Public)
65	*Smith, Carroll	LG	187	5-11	22	Senior	Sebring
66	Roberts, Robert	LG	188	5-11	19	Sophomore	Zanesville (Lash)
67	**Wittman, Julius	RT	211	6-1	21	Senior	Massillon
69	Leo, Thomas	G	191	5-11	20	Freshman	Canton (South)
71	*Logan, Richard	RT	226	6-2	21	Senior	Mansfield
73	Jacoby, George	LT	212	5-10	19	Sophomore	Toledo (Libbey)
74	Guthrie, George	LT	215	6-1	19	Junior	Columbus (Arlington)
75	*Hietikko, James	LT	216	6-3	20	Junior	Conneaut
77	Endres, Robert	RT	208	6-1	21	Senior	Cincinnati (Hughes)
79	Vavroch, William	RT	210	6-1	20	Junior	Cleveland (Rhodes)
80	*Grimes, Robert	RE	194	6-1	20	Junior	Middletown
81	**Armstrong, Ralph	LE	208	6-4	21	Senior	Cleveland (Rhodes)
83	Dugger, Dean	LE	200	6-1	19	Freshman	Charleston, W. Va. (St'new'll)
84	*Gandee, Sherwin	LE	204	6-0	22	Senior	Akron (Garfield)
85	Joslin, Robert	LE	182	6-0	20	Sophomore	Middletown
86	Harris, Robert	LE	186	6-2	18	Freshman	Barberton
87	Knapic, Bernie	LE	192	6-2	20	Sophomore	Youngstown (Chaney)
89	*Walther, Richard	RE	191	5-10	21	Junior	Dayton (Fairmont)
90	Thomas, Richard	RE	180	6-1	20	Junior	Martins Ferry
91	Manyak, John	LE	188	6-1	21	Junior	Warren (Harding)
93	Katula, Ted	RE	182	6-1	20	Sophomore	Camrbell (Memorial)
94	Shelton, John	RE	178	6-2	18	Freshman	Ironton
96	Schiller, Richard	LT	260	6-2	17	Freshman	Bellaire

\* Indicates Letters

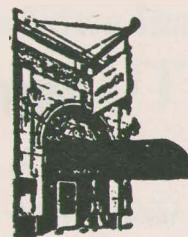


MORE AND MORE  
IT'S

# ... The Maramor ...

COLUMBUS' NATIONALLY FAMOUS  
RESTAURANT

LUNCHEON . . . COCKTAILS . . . DINNER



137 E. BROAD ST.

(2 minute walk from Broad & High)

## DAVID DAVIES, Inc.

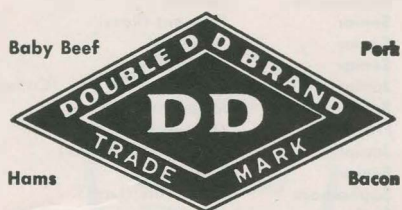
Meat Packers

Columbus, O.—Zanesville, O.

*Ohio Owned and Operated*

Serving All Ohio

Ohio's Favorite Meat Products



Look for the Diamond-Shaped  
Double "D" Emblem

"makes your home  
look like a million"



**DEAN & BARRY  
HOUSE PAINT**  
with Poly-Lin

- looks smoother
- looks glossier
- looks better longer



## Stop staring at your radio!

Lowest Priced Nationally Advertised Calibre Television in all America!

Muntz TV, Inc., 986 W. Goodale Blvd., Call KLondike 3561 For Free Home Demonstration



# UNIVERSITY OF IOWA ROSTER

No.	Name	Pos	Wgt.	Hgt.	Age	Yr. on Squad	Home and High School
53	*Bennett, Bernard	LHB	180	5-10	19	2	Mason City
10	*Bjork, Don	LE	195	6-2	20	2	Albert City
18	Boothe, Charles	RG	205	6-0	19	1	Galesburg, Ill.
38	**Brandt, Duane	RHB	195	6-1	21	3	Waverly
14	Brattebo, Dick	LLB	165	5-10	22	2	Story City
66	**Bristol, Joe	LHB	185	5-11	23	3	Corydon
25	*Britzmann, Burt	QB	168	5-11	21	2	Hawarden
49	Broeder, George	RHB	180	5-8	18	1	St. Louis, Mo. (Maplewood)
41	**Buntz, Andy	RT	205	6-2	23	3	Des Moines (East)
77	**Caplan, Arnold	RE	190	6-1	23	3	Des Moines (East)
44	Chelf, Don	RT	215	6-3	20	1	West Liberty
46	Clark, Jerry	LLB	195	5-8	19	1	Independence (Glidden, Iowa)
11	Colville, Lloyd	G	205	5-10	21	1	Ottumwa
22	**Commack, Don	RHB	165	5-9	22	3	Waterloo (East)
76	Corbin, Del	RE	190	6-2½	20	2	Council Bluffs (Jefferson)
19	DaBillo, Lloyd	RT	215	6-3½	19	1	Waterloo (East)
72	Davis, Duane	HB	165	5-11	19	1	Iowa City (City)
61	**Denning, Charles	LLB	190	5-11	22	3	Boone
42	*DeProspero, Dave	LE	220	6-5	23	3	Wheeling, W. Va.
48	**Fairchild, Ron	RG	215	5-10½	21	3	Coralville (Marengo, Iowa)
28	Fenton, Bill	RE	205	6-3	19	1	Iowa City (City)
58	Frazer, Jim	LT	220	6-2½	20	1	Davenport (St. Ambrose)
68	Frymire, Dick	LG-RG	205	6-2	19	1	Davenport (St. Ambrose)
54	Gardner, Clyde	RE	200	6-1	21	1	Newton
26	Hatch, Jim	HB	185	6-1	18	1	Lancaster, Wis.
57	Hayman, Phillip	T	205	5-10	18	1	St. Louis, Mo.
34	Hess, Jack	HB	187	6-0	20	1	Des Moines (Dowling)
47	Hilgenberg, Jerry	C	195	6-1½	20	2	Wilton Junction
52	Houg, Andy	LE	195	6-3	19	1	St. Ansgar
16	Houser, Forrest	T	210	6-0	20	1	Griswold
50	Hutchinson, Roy	RG	215	5-10	22	2	Fort Dodge
31	Inman, Don	FB	200	5-10	18	1	Tama
37	*Johnston, Hubert	LT	240	6-6	20	3	Wheeling, W. Va.
36	Keefe, Robert	LLB	187	5-11	21	1	Cleveland, O. (Benedictine)
67	Kemp, Paul	QB	175	6-0	20	1	Waterloo (West)
74	*Kersten, Bill	LG-CLB	210	6-0	24	4	Logan
56	*Lage, Bob	RG	190	5-10	24	3	Long Grove (Davenport, Iowa)
15	Leinbaugh, Lyle	HB	170	5-10	20	1	Holstein
63	Lindquist, Bill	LT	205	6-2	19	1	Orlon, Ill.
29	Lindsey, Jack	LE	185	6-1	20	1	Davenport
39	McBride, Dan	E	176	6-1	20	1	Burlington
32	Milani, Jim	HB	165	5-8	18	1	Centerville
35	Morlock, Paul	C	204	6-2½	19	1	Aurora, Ill. (West)
62	Myers, George	G	200	5-9	20	1	Rochelle, Ill. (DeKalb Township)
79	*Noble, Dudley	RT	215	6-2	20	2	Ft. Madison
64	*Nordman, Gerald	FB	195	6-0	24	3	St. Louis, Mo. (Ritenour)
69	*Petersen, Ron	C	195	6-3½	21	3	Clear Lake
27	Plaehn, Robert	G	195	5-8	17	1	Redwood City, Cal.
43	Phillips, Robert	LHB	180	5-11	19	1	Cedar Rapids (Franklin)
30	*Reichardt, Bill	FB	205	5-11	21	3	Iowa City (City)
51	Reister, Harold	Safety	180	6-1	20	1	St. Louis City (East)
60	Rice, George	LHB	178	6-0	20	1	Oelwein
45	*Riley, Don	FB-RLB	220	6-1	23	3	Chicago, Ill.
20	*Ruck, Fred	RE	190	6-2	22	3	Davenport
40	*Sangster, Jim	QB	175	5-11	22	2	Iowa City (City)
73	Schnoor, Galen	T	210	6-2	24	1	Maquoketa
21	Slevers, Jack	T	225	6-0	21	1	Arlington, Va.
70	*Spanjers, Pete	LT	225	5-10½	21	2	Milbank, S. D.
65	Stearnes, Bob	RHB	170	5-7	18	1	Gary, Ind. (Roosevelt)
59	*Swartzendruber, Don	LE	215	6-2	21	2	Wellman
33	Thomas, Fred	C	205	6-2	19	1	Western Springs, Ill.
17	**Towner, John	C-RLB	205	6-0	21	3	Des Moines (Roosevelt)
78	*Turner, Austin	LG-CLB	210	6-1	22	3	Corning
75	Wilke, Dick	T	230	6-0	18	1	Dubuque
71	Willett, Jack	RHB	175	6-0	20	1	Oelwein
55	Williams, Loranzie	LHB	167	5-9	19	1	Gary, Ind. (Froebel)
23	*Wilson, Robert	RHB	180	5-11	22	3	Iowa City (City)
12	Wright, Bill	HB	175	6-1	18	1	Des Moines (North)

\* For each major letter.

*"The Official Watch for Timing This Game is Longines—the World's Most Honored Watch"*



# ICE COAL

and

# Stoker COAL

CHARCOAL — ICE CUBES  
AND CARRY OUT CRUSHED ICE

ALSO

CINCO ALL-ALUMINUM  
COMBINATION WINDOWS



# MURRAY CITY COAL & ICE CO.

1334 EDGEHILL ROAD

UN. 1151

UN. 1152

Boardman & Sons

# Howard Johnson's

*Ice Cream Shoppes and Restaurants*

OF

COLUMBUS, OHIO



BEFORE AND AFTER THE GAME  
AVOID IN-TOWN PARKING PROBLEMS



Three Convenient Locations



East Broad Street and James Road  
5090 North High Street  
1313 Olentangy River Road

# E. ELFORD & SON, INC.

## Contractors

COLUMBUS, OHIO

# Ohio State Schedules For 1951-54 Inclusive

1951

1953

Ohio State 7; S.M.U. 0	Sept. 26 Indiana, here
Ohio State 20; Mich. State 24	Oct. 3 At California
Ohio State 6; Wis. 6	Oct. 10 Illinois, here
Ohio State 10; Ind. 32	Oct. 17 At Pennsylvania
Oct. 27 Iowa, here	Oct. 24 At Wisconsin
Nov. 3 Northwestern, here	Oct. 31 Northwestern, here
Nov. 10 At Pittsburgh	Nov. 7 Mich. State, here
Nov. 17 Illinois, here	Nov. 14 Purdue, here
Nov. 24 At Michigan	Nov. 21 At Michigan

1952

1954

Sept. 27 Indiana, here	Sept. 25 Indiana, here
Oct. 4 Purdue, here	Oct. 2 California, here
Oct. 11 Wisconsin, here	Oct. 9 At Illinois
Oct. 18 Wash. State, here	Oct. 16 Iowa, here
Oct. 25 At Iowa	Oct. 23 Wisconsin, here
Nov. 1 At Northwestern	Oct. 30 At Northwestern
Nov. 8 Pittsburgh, here	Nov. 6 Pittsburgh, here
Nov. 15 At Illinois	Nov. 13 At Purdue
Nov. 22 Michigan, here	Nov. 20 Michigan, here

AD. 0410

AD. 0292

# The RIVIERA RESTAURANT AND CAFE

Tony Delewese

*Air Conditioned*



DRINK

*Coca-Cola*

REG. U.S. PAT. OFF.

*add Zest*



### Scores through the years

1922	Ohio State	9, Iowa	12
1923	Ohio State	0, Iowa	20
1924	Ohio State	0, Iowa	0
1925	Ohio State	0, Iowa	15
1926	Ohio State	23, Iowa	6
1927	Ohio State	13, Iowa	6
1928	Ohio State	7, Iowa	14
1929	Ohio State	7, Iowa	6
1934	Ohio State	40, Iowa	7
1944	Ohio State	34, Iowa	0
1945	Ohio State	42, Iowa	0
1947	Ohio State	13, Iowa	13
1948	Ohio State	7, Iowa	14
1950	Ohio State	83, Iowa	21

Ohio State Won 7, Lost 5, Tied 2

BOTTLED UNDER AUTHORITY OF THE COCA-COLA COMPANY BY

COCA-COLA BOTTLING COMPANY

COLUMBUS, OHIO



America's most  
popular cigarette



FLAVOR

MILDNESS