

COMMUNITY CARE NETWORK: HEALTH COACH PROGRAM

A JOINT PARTNERSHIP BETWEEN THE COLLEGE OF WOOSTER &
THE WOOSTER COMMUNITY HOSPITAL

COMMUNITY CARE NETWORK

- The Community Care Network is a collaborative program between Wooster Community Hospital and The College of Wooster.
- Began in Fall 2014



GOALS OF THE PROGRAM

- **Hospital Goals:** promote wellness, reduce the need for potentially unnecessary procedures and hospitalizations and promote delivery of evidenced based care
- **College of Wooster Goals:** to provide students interested in the pre-health field to gain “real life” hands on experience with patients.
 - This will ultimately make them stronger applicants
 - Allows them the opportunity to determine if this is the right fit

MESSAGE FROM THE DOCTORS

Wooster Community Hospital Video

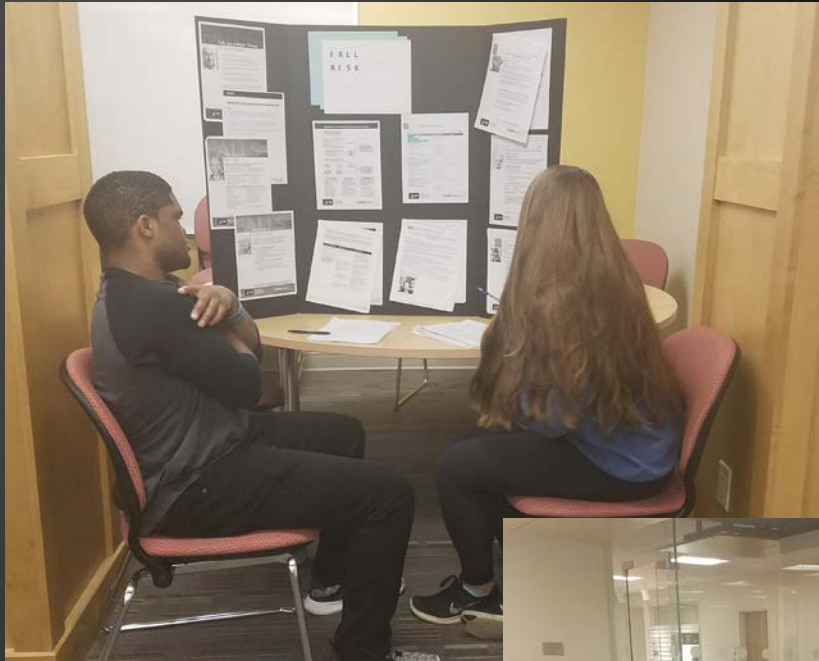
HEALTHCARE SEMINAR

- ½ credit course taught by medical professionals in the community
- designed to provide a broad education of the diseases and issues students are likely to encounter



HEALTHCARE SEMINAR

- By application only – spaces are reserved for Pre-Health students
- Taught both fall and spring semesters – approximately 25 students each semester
- Classes meet Monday evening and each week is different medical professional speaks on a different topic.
 - Examples include: Pulmonologist, Cardiologist, Family Practitioner, Mental Health Professional, Registered Dietitian.



HEALTHCARE PRACTICUM

- After students successfully complete the seminar portion of the program, they are able to enroll in the ½ credit practicum portion of the program.
- Each student is assigned a Nurse Supervisor who introduces them to their patients.
- A Plan of Care is created and the student is informed of the patient's diseases, what they should be monitoring, and how they can be most helpful.
- Health Coaches meet with their patients weekly and are trained on how to write up their notes.

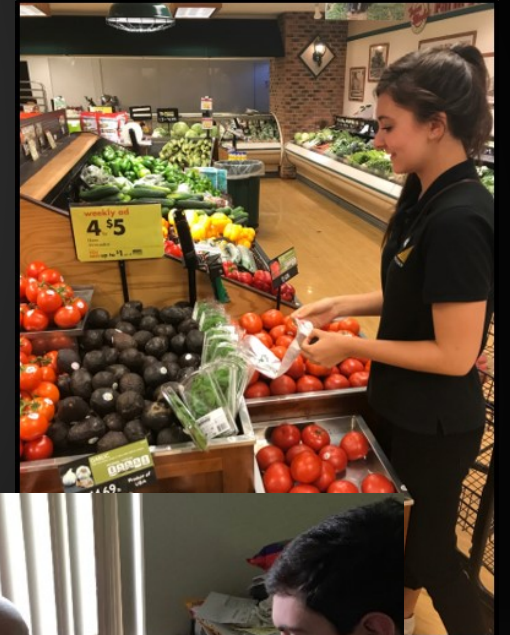


- Practicum Students are divided into teams (similar to hospital rounds).
- Once every other week the report on their patients to the Co-Medical Directors of the program
 - Dr. Amy Jolliff and Dr. Paul Nielsen
- Feedback and advice is provided and the student returns to their patient to implement the plan



STUDENT BENEFITS

- Hands on Patient Experience
- Stronger Applicants
- Experience working with a Healthcare Team
- Opportunity to determine if this is the right path



SUMMER APEX FELLOWSHIPS

- To continue to support the program during the summer break – Wooster expanded the program to include summer APEX fellows
- In the summer of 2017 – the program included three APEX fellows.



HOSPITAL OUTCOMES

- Clients- 231 enrolled
- Outcomes-
 - No readmissions for medication errors
 - 51% of diabetic patients have improved blood sugar numbers
 - 73% reduction in ED visits
 - 77% reduction in hospital utilization





STUDENT OUTCOMES

- 175 students have participated in the program since Fall of 2014
- In the 2016-2017 MD applicant pool – Health Coaches had an 83% acceptance rate
 - The National Average is 40%
 - 18 students in the application process this cycle
 - 80 active coaches in the Wooster community this spring semester

QUESTIONS?