

IOWA



Fred
Machetanz

OHIO STATE

October 12, 1929 · 25 cents

Operated by Three Ohio State Men

THE McCLURE-NESBITT MOTOR COMPANY

East Main at Kelton



Built by D. B. Hussey, Inc.

Architect—Ray Sims

SALES



SERVICE

SALESMEN

P. J. "Pat" Patton
C. A. "Doc" Howell, Jr.
H. R. "Woodie" Wood

H. C. "Chubby" Morford
A. E. "Art" Dellenbaugh
E. H. Morris
Frederick Rupp, Jr.

J. W. Ketchum
Paul I. Hoxworth
Warren C. Dunn

FRanklin 0611

FRanklin 0612

NEW ♦ MODERN ♦ NEW



THE BOOK FOR MODERN GREEKS

IF YOU ARE INTERESTED in the purchase of Fraternity Jewelry, we invite you to write for your copy of THE BOOK FOR MODERN GREEKS, forty-eight pages of carefully selected items to delight the Fraternity man and woman ♦ ♦ ♦ ♦



BURR, PATTERSON & AULD COMPANY

1808 North High St.
COLUMBUS, OHIO

Barton C. Kagey, Manager

Hoosier Kitchen Cabinets
Builders' Hardware

"PERFECTION WOODWORK"

Quality Roofing
100% Pure Paints

Established
1892

J.H. **ZAMM** CO.

2556
North High

"There's a Material Difference"

THE MANAGEMENT OF
The
New Rose Marie
Restaurant

---Extends to you all a welcome
to Dine, Dance and be Merrie

1392 NORTH HIGH—NEAR KING

Open 6 a. m. till 2 a. m.

MARBLE - TILE TERRAZZO

THE ARDIT MOSAIC TILE & MARBLE COMPANY

667 West Mound Street
COLUMBUS, OHIO

OUR INSTALLATION AT O. S. U.

Mack Hall

Educational Building

Pomerene Hall

President's Residence

Chemistry Complete

DEPENDABLE QUALITY AND SERVICE

Ohio Gridmen



Holcomb
F.B.



Baker
Q.B.



Kabealo
G.



Selby-G.



Dill-E.



Haubrich
T.



Bell-T.



Slaughter
G.

NIGHT BEFORE *the* MICHIGAN GAME

Toledo Alumni invite you to make whoopee at the

SCARLET and GRAY Football Dance

Madison Gardens--Toledo
OCTOBER 18th

From 9 P. M. to 2 A. M.

\$2.50 the couple

STAGS WELCOME

Fentons Cleaning Is High In Quality and Low In Price

We have the latest, scientific equipment for doing quality work. With Twenty-five branch stores scattered conveniently all over town, we are in a position to render an extremely prompt, efficient service.

Winter Clothes

NOW is the time to have your winter apparel thoroughly dry cleaned and pressed for use. Our processes return them to you in condition to serve you well another season.

New Low Prices	Plan 1—Regular Call and Delivery Service.	Plan 2—New Cash and Carry Service.
Suits—Topcoats	\$1.00	85c
Ladies' Dresses	\$1.25 up	\$1.00 up
Ladies' Coats	\$1.25 up	\$1.00 up

FENTONS
Dry Cleaning

25 STORES ALL OVER TOWN

General Offices and Plant, 761 E. 11th Ave.

UN. 2360

Special Men's Service

MEN: Our Dry Cleaning and Pressing of your winter Suits and Overcoats will result in a considerably economy. Our Cash and Carry or Call and Delivery Service are at your service.

OFFICIAL PROGRAM

IOWA

VS.

OHIO STATE

W. D. GRIFFITH, *Editor*

M. M. LEBENSBURGER, *Advertising* FRANK B. TEEGARDIN, *Advertising*

FREDERICK MACHETANZ, *Artist*

THE BIG TEN RACE IS ON

TODAY marks the opening of the 1929 Western Conference football campaign. Chicago meets Indiana at the Windy City, Purdue entertains Michigan, while Wisconsin and Northwestern tangle in the Badger lair. The University of Illinois and Minnesota are playing non-conference teams, Bradley and Vanderbilt, respectively. Iowa rings up the curtain against Ohio State in the Buckeye stadium.

There has been no Iowa-Ohio State game without a wealth of color and keen competition. Iowa is the "youngest" of the Big Ten opponents that Ohio State possesses. The first game between these two institutions was scheduled in 1922, all other Western Conference members having been met at some time prior to that date. Annual engagements have been continuous since the first game and all scores have been close enough to be indicative of the hard-fought battles that have resulted.

Ohio State welcomes the Hawkeyes to the Stadium for the eighth game of the series. Scores of the past are as follows:

1922	Ohio State	9	Iowa	12
1923	Ohio State	0	Iowa	20
1924	Ohio State	0	Iowa	0
1925	Ohio State	0	Iowa	15
1926	Ohio State	23	Iowa	6
1927	Ohio State	13	Iowa	6
1928	Ohio State	7	Iowa	14

FREE LINEUP SHEETS

Lineup sheets containing playing numbers of both squads as well as the probable lineup are available at all approaches to the seating section. The Football Program is sold on its merits as a publication containing game and other information, liberal art and contributed features. The lineup sheets are provided for those who do not desire to purchase a program for the information necessary to the identification of players.

Ormerod's
PRESCRIPTION EXPERTS

11th Ave. and N. 4th St. Columbus, Ohio

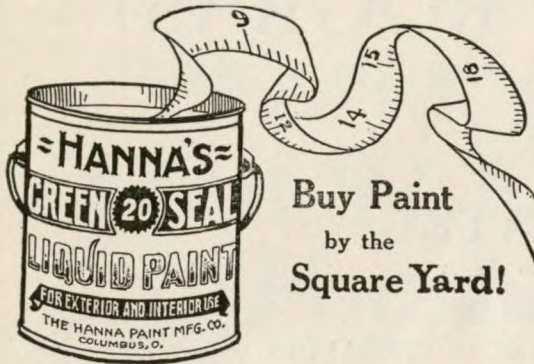
DRUGS

SODAS

CIGARS

Phone No. UN. 3311

Yardage Counts in Paint Also



Buy Paint
by the
Square Yard!

Green Seal will go farther
Better see your nearest dealer
for
Green Seal Wins by Yards

The Hanna Paint Mfg. Co.
Incorporated

Columbus, Ohio Indianapolis, Ind.
Louisville, Ky. Cleveland, Ohio



The two finest trains
in the World

**NORTHWESTERN
LIMITED**

Chicago—St. Paul—Minneapolis

Lv. Chicago daily 6:30 p. m.

**CORN KING
LIMITED**

Chicago—Omaha—Sioux City

Lv. Chicago daily 6:05 p. m.

For complete information, apply

C. A. CAIRNS, Passenger Traffic Manager
400 W. Madison St.
Chicago, Ill.

CHICAGO &
NORTHWESTERN
The Best of Everything in the Best of the West RAILWAY



Tom Jones
with
Walkers
Hart, Schaffner and Marx
20 North High Street

Compliments of

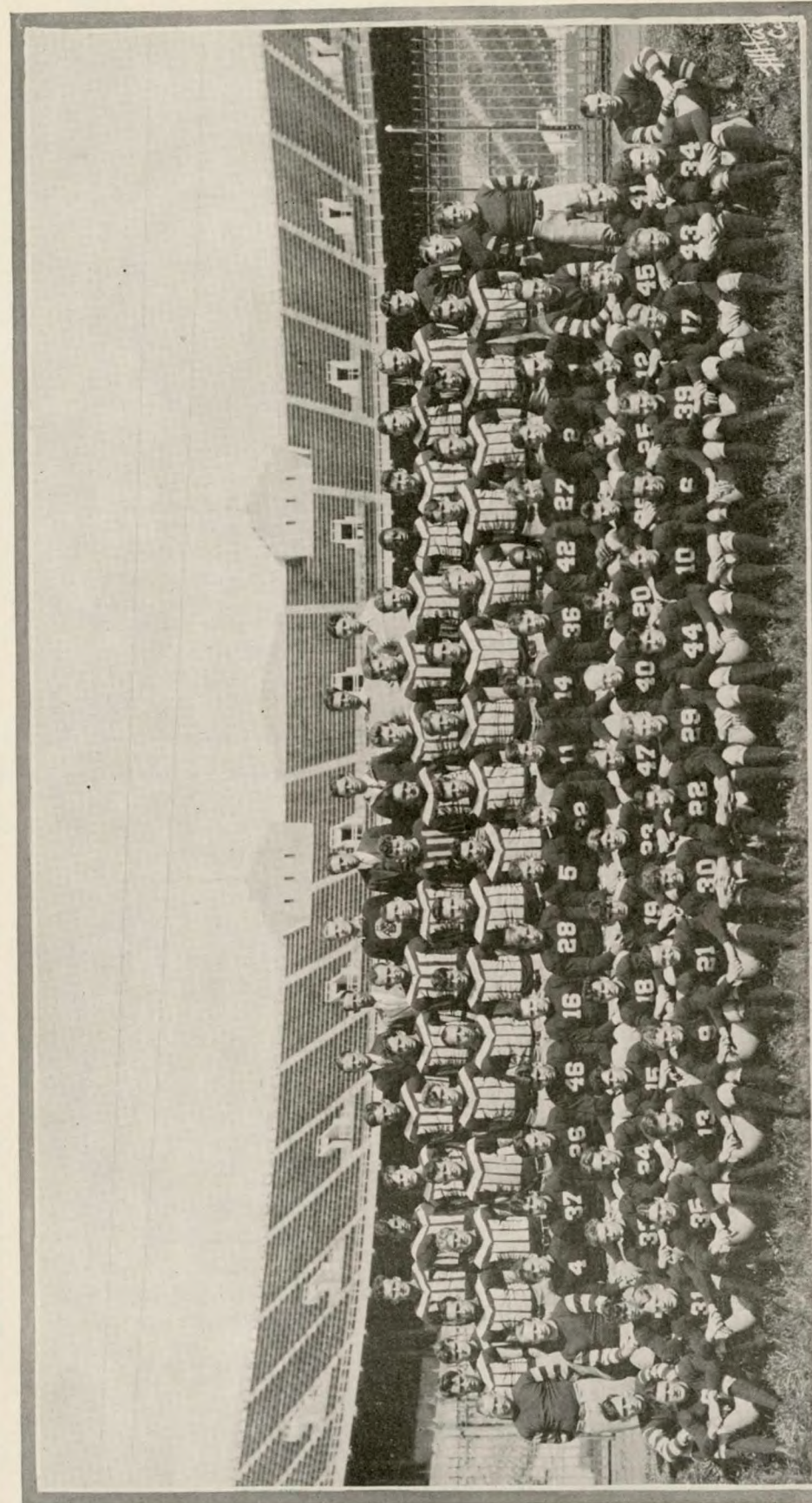
The
**Dayton Dental
Supply Co.**

DAYTON, OHIO
CLEVELAND, OHIO
COLUMBUS, OHIO
CINCINNATI, OHIO



"Service to Dentists"

OHIO STATE UNIVERSITY 1929 VARSITY SQUAD



Left to right

Front row: Dill, Carter, McConnell, Horn, Fouch, Larkins, Fesler, Fontaine, Selby, Barratt, Holman, Huston, Marsh, Nesser, Ujhelyi, Griffith.

Second row: Hauser, Asst. Coach; J. Hall, Weaver, Benis, Peterson, Reboulet, Taylor, Larson, Ohsner, Coffee, Carlin, Hess, McClure, Glasser, O'Shaughnessy, Willaman, Head Coach.

Third row: Godfrey, Asst. Coach; Oberlander, Asst. Coach; Buechsen- schuss, Haubrich, Worstell, Humberstone, Baker, Kile, Campbell, VonDerau, Follett, Grady, Slaughtner, Bell, Kabealo, Farrier, Simp- son, Miller, Asst. Coach.

Left to right

Fourth row: Doyle, Thompson, Hinchman, Hall, R., Cochran, Lemon, Plesko, Dick, Lanzendorfer, Dunn, Wyer, Hudson, Hindulak, Ross, Rabenstein, Kazmerchak, Fisher, Clymer, McDonald, Asst. Coach; Surina, Asst. Coach.

Fifth row: Cloud, Heppberger, Tuttle, Nicklaus, Spittler, Mitchell, Hunt, Bresnahan, Holan, Stout, White, Zeckhauser, Mack, Kovic, Clapsaddle, Sattler, MacBride.

Top row: Zinke, Sr., Mgr.; Dr. Duffee, Team Physician; Roemer, Sr. Mgr.; Davis, Manager; Smith, Trainer; Zinsmaster, Manager; Griffith, Manager.

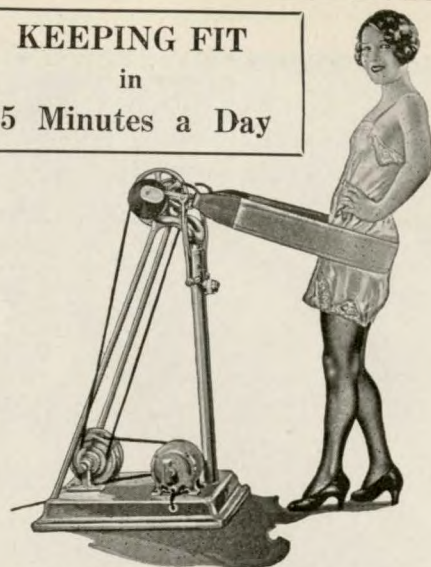
Robert H. Evans
& Co.

Builders
— AND —
Engineers

395 East Broad Street
Phone AD. 8115

[[The New Pharmacy and Bacteriology
Building now under construction on the
Ohio State Campus]]

KEEPING FIT
in
15 Minutes a Day



MUSCULAR DEVELOPMENT
and
GOOD HEALTH

in an easy, pleasant manner by means of
THE HEALTH BUILDER

Also an ideal weight reducer. Used in thousands of
homes, in modern athletic clubs and schools.

Write for booklet—no obligation

THE MAX WOCHER & SON CO.
The Oldest and Largest Surgical Supply House
29-31 West Sixth St. Cincinnati, Ohio

NOW--A New Low Price!

SOCIETY BRAND Two-Trouser Suits

YOU young college men admire these
fine Society Brand "Double-Ser-
vice" Suits and you'll be glad of the extra
saving at this new low price. More
style! More wear! More value! All
for \$50. College models, such as only
Society Brand knows how to create.

\$50

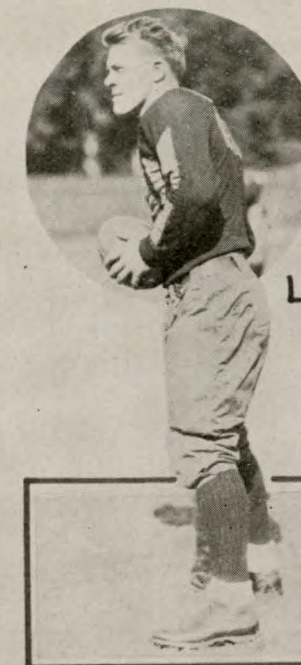
College Room—Third Floor

The MAY COMPANY
The Young Men's Store of Cleveland

Iowa Threats



Farroh-H.B.



L.B. Jensvold
Q.B.



Sensen-F.B.



Pape-H.B.



I.L. Nelson-Q.B.

When the Final Whistle Blows

REGARDLESS of whether it signified the final play in the game of football or the final transaction in the stock market, you'll find complete, accurate facts, figures and details in the

PINK

READ THE COLUMBUS CITIZEN'S STOCK EDITION
FOR COMPLETE FINANCIAL AND SPORT NEWS.



Changes in Football Rules

DEAD BALL—A ball which has been muffed or fumbled and then recovered by the opponents after striking the ground, may not be advanced but is automatically dead at the point of recovery. Institution of this rule has permitted the elimination of former regulations relative to the protected backward pass. In 1928, players of the kicking side were restricted from advancing the ball in case they subsequently recovered it legally. This rule has also been extended to cover kickoffs, free kicks and kicks which do not cross the line of scrimmage.

FUMBLED KICKS—If any kicked ball, except at kickoff, is actually caught by a player and then fumbled, going out of bounds before crossing either goal line, it shall belong to the side whose player last touched it in the field of play. On other kicks that go out of bounds before crossing the goal line, the ball belongs to the receiving side at the point where it goes out of bounds.

PASSIVE INTERFERENCE—Offensive players who are ineligible to receive forward passes, are now penalized for "passive" as well as "active" interference with defensive players. If they in any way obstruct the right of way of a defending player, they are penalized, and, in case of doubt, the penalty shall be inflicted.

POINT AFTER TOUCHDOWN—The try-for-point after touchdown is to be made from the two-yard line instead of the three-yard line as heretofore.

*Bringing the Charm
of Distinction From Our
Studio to Your Home*

ANTIQUES
ORIENTAL RUGS
CUSTOM-BUILT
FURNITURE

Let our expert decorators help you plan
or refurnish your home. This service
without charge.



The Egelhoff Studios Co.
269 East Broad St.

What They Did A Year Ago



Ohio State	41	Wittenberg	0
" "	10	Northwestern	0
" "	19	Michigan	7
" "	13	Indiana	0
" "	6	Princeton	6
" "	7	Iowa	14
" "	39	Muskingum	0
" "	0	Illinois	8
Iowa	26	Monmouth	0
" "	13	Chicago	0
" "	61	Ripon	6
" "	7	Minnesota	6
" "	19	South Dakota	0
" "	14	Ohio State	7
" "	0	Wisconsin	13
" "	7	Michigan	10

Rent...
why buy?

Call Us for Your
Linen Requirements

COATS
APRONS
DISH TOWELS
OFFICE TOWELS
TABLE LINEN

An inexpensive cleanliness

THE FORREST TOWEL SUPPLY
COMPANY

HIGH AND HOSTER STREETS
MA. 1311 MA. 1311

The M. J. Bergin
Lumber Co.



A PIECE
OR A CARLOAD



Grant Avenue at Eighth Avenue
Call Us at UNiversity 2254

Telling's

UNEQUALED QUALITY

ICE CREAM

Scores a
Touchdown
with your taste
....every time!

IT'S
PURE
DELICIOUS
WHOLESOME!

Buy it from Your Telling's
Dealer in Bulk or DeLuxe Package
... delightful new specials
regularly—watch for them!

The E. A. Prentice Lumber Co.

Wholesale Retail

LUMBER MILLWORK
PANELS

Manufacturers of Special Millwork



Lumber Office Factory Office
441 North Front Street Vine and Armstrong Sts.

Columbus, Ohio

PHONE—ADAMS 6256

The Smith Bros. Hardware Company

Wholesalers of

GENERAL
HARDWARE

Plumbing, Electrical, Factory, Rail-
way and Mine Supplies

Radios, Radio and Auto Accessories

580 North Fourth Street
COLUMBUS, OHIO

Western Conference Football Champions



1897	Wisconsin
1898	Michigan
1899	Chicago
1900	Minnesota and Iowa
1901	Michigan and Wisconsin
1902	Michigan
1903	Michigan and Minnesota
1904	Michigan and Minnesota
1905	Chicago
1906	Wisconsin and Minnesota
1907	Chicago
1908	Chicago
1909	Minnesota
1910	Illinois and Minnesota
1911	Minnesota
1912	Wisconsin
1913	Chicago
1914	Illinois
1915	Minnesota and Illinois
1916	Ohio State
1917	Ohio State
1918	(Unofficial)
1919	Illinois
1920	Ohio State
1921	Iowa
1922	Iowa and Michigan
1923	Michigan and Illinois
1924	Chicago
1925	Michigan
1926	Michigan and Northwestern
1927	Illinois
1928	Illinois

Ohio Veterans

Barratt-C.



Ujhelyi-F.B.

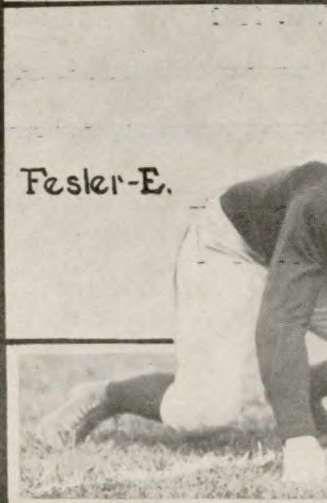


Coffee-H.B.



Larkins-T.

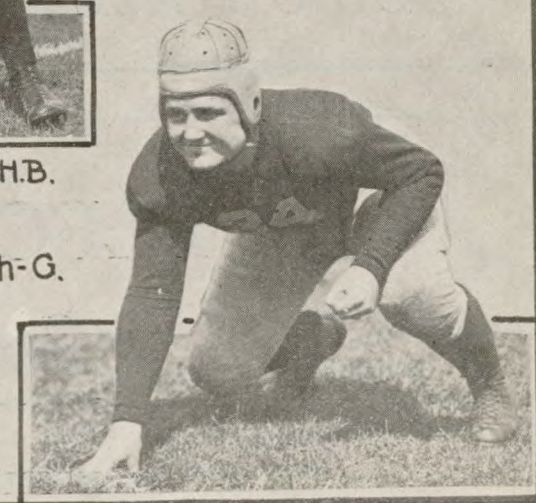
Fesler-E.



Holman-H.B.



Griffith-G.



After the Game Dinner and Dancing at


De Olde Chase Tavern 5939 North High

Table-d'hôte [Featuring CHICKEN - STEAK] A la Carte
❖ SEA FOOD and FISH ❖

GOOD MUSIC

FREE DANCING

**"5 Yards
To Go (to)"**

The
 **Doddingtons
Yards**

*Lumber and
Millwork*

*We're for you,
OHIO STATE*

BLOCK'S

University Flower Shop

*Where
All
Students
Buy*



16th Ave. and High St.
Wa. 1452

E. ELFORD & SON

Contractors

COLUMBUS, - - - OHIO

October 12---Columbus Day!

HAIL Christopher Columbus!

Columbus, the greatest monument to the discoverer of America, pauses today to pay tribute to him.

Columbus is the largest city in the world named after Christopher Columbus. If Columbus were living today he would find in Columbus the ideal city.

City area of 35.71 square miles near the geographical center of Ohio. Elevation 760 feet. Columbus is within 8 miles of the "Center of Manufacture" of the United States, as determined from the 1925 census of manufactures, and 200 miles east of the national center of population.

Two hundred and ninety-nine thousand population, according to the census estimate of 1928. Polk Directory calculations of 1928 placed the figure for Columbus and environs at 318,000. 94% of the population is American born. 80,577 families estimated. The population per acre is 13.

Columbus enjoys an advantageous location with reference to raw materials and markets. Center of an area ranking high in agriculture, mining, manufacturing and trading. Within easy distance of the ore-producing north, and the cotton raising south, while rich coal, gas and oil fields lie at the city's very threshold. An abundant water supply unexcelled in purity and softness.

Seven hundred and seventy-eight wholesale houses supply 10,977 retail outlets in the surrounding 29 counties. These counties contain 77 cities and towns of more than 1000 population, as well as smaller villages, and rural communities of high buying power. Fifty-two per cent of the area is urban. This trade area, defined by "The 100,000 Group of American Cities," has a population of 1,186,743.

Eleven commercial banks and trust companies have resources of \$143,474,400 and deposits of \$118,404,300. 29 building and loan associations with 250,000 clients have built up resources of \$142,123,481. Checks cashed in 1928 totaled \$2,088,218,389.

One thousand one hundred and seventy-seven acres of parks and playgrounds are maintained by the city. Riverside park, a large forested plot of unusual attractiveness following the Scioto River for a distance of 11 miles, is one of the finest recreation spots in the country. There are 51 theatres and moving picture houses. Athletic events may be presented before 72,000 spectators in the Stadium of Ohio State University. Three auditoriums seating 20,000 are available for exhibitions, concerts and conventions.

Columbus provides every educational advantage. Five Senior High and 12 Junior High Schools, 53 Public Grade and 20 Parochial Schools care for the education of 50,000 students. Four colleges and seminaries enroll 800, while 13,000 attend Ohio State University annually. Five well equipped libraries house 740,000 volumes. 262 churches have an approximate membership of 112,000.

Columbus is governed by a mayor and council under the modified Federal plan. A well conceived and executed public improvement program, including the extension of acreage in parks and playgrounds, beautifying of the Scioto River and the development of a civic center along its banks, and the construction of a \$1,000,000 City Hall without the necessity of borrowing, stand as some of the outstanding achievements of the city.

To music lovers Columbus offers many privileges, among them being the Women's Music Club, largest of its kind in the country, The Columbus Symphony Orchestra, an annual season of opera by the Chicago Civic Opera Company, and a yearly series of winter concerts bringing to the city the world's leading musicians. Art appreciation finds expression in various activities centering about the Columbus Gallery of Fine Arts.

Columbus industry is unusually diversified. As a consequence it does not suffer from business fluctuations as do other areas of greater specialization. \$100,000,000 is expended annually by local concerns for raw materials, and \$44,000,000 is paid to wage earners. Excellent opportunities exist for well managed companies to add to and supplement established industry.

YEA TEAM!

The Village Restaurant INC.

185 West Eleventh Avenue

FOR DINNER
AFTER THE GAME

Service—5 Until 8

Luncheon—11 Until 2

Established 46 Years

D. W. McGrath & Sons

General Contractors

Building
Construction



255 EAST BROAD STREET

Everybody....

*Enjoys Furnas Quality
Ice Cream*

You'll like it too because it is deliciously flavored to suit the most discriminating appetite. Furnas Quality Ice Cream has won its popularity on the campus . . . in the business world and in the home. Anywhere it is served it pleases. The next time you eat ice cream be sure it's Furnas.

Buy Your Ice Cream From a Furnas Dealer

You Can Taste The Quality In
FURNAS
QUALITY
ICE CREAM



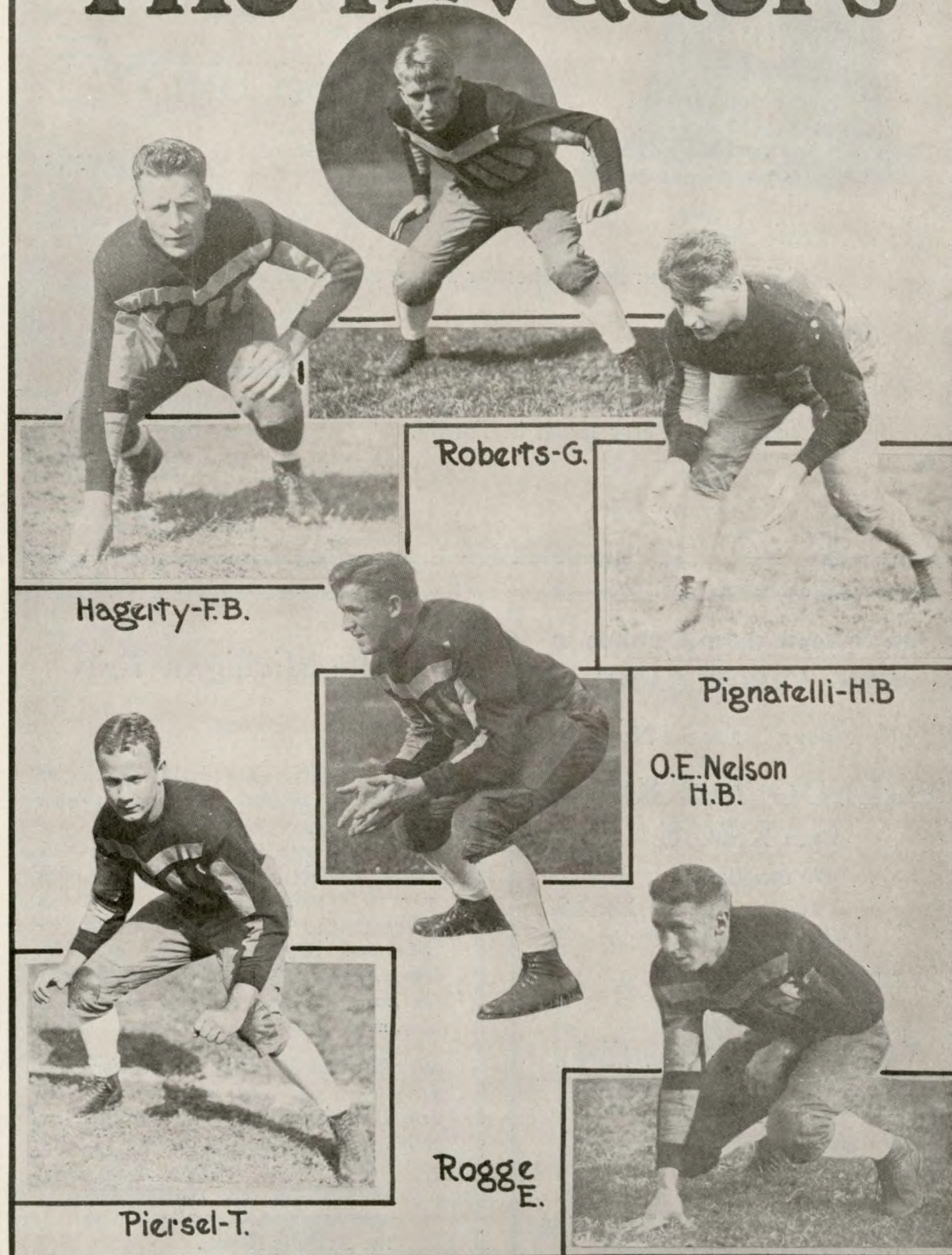
Home Office Building
Broad Street at Grant Avenue
Columbus, Ohio



AGENTS WANTED on the Campus, in Columbus, in Ohio, and in Other States.

ADDRESS John M. Sarver, President

The Invaders



Roberts-G.

Hagerty-F.B.

Pignatelli-H.B.

O.E. Nelson
H.B.

Rogge
E.

Piersel-T.



The Commodore Perry Hotel

TOLEDO, OHIO

500 ROOMS

500 BATHS

To Ohio State—

We extend our best wishes for a most successful season.

To The Fans—

We respectfully suggest that you add to the pleasure of your trip to the Michigan game by staying Friday and Saturday nights at The Commodore Perry Hotel in Toledo.

J. B. Quigley,
General Manager.

When en route through Toledo to ANN ARBOR GAME

Park Your Car at the New

TOLEDO PARKING GARAGE

134 Superior St.

Directly across the street from the Commodore
Perry Hotel Coffee Shop

and

Adjoining Hotel Secor in the rear

*Newest and Most Beautiful
Garage in Ohio*

700 CAR CAPACITY

Quick Service

Lowest Prices

Advance reservations if desired

The Michigan Trip

TWO TRAINS—The Athletic Association is sponsoring two special trains to Ann Arbor for the Michigan-Ohio State game on October 19. One train leaves from the T. & O. C. Station on West Broad Street, and the other over the Hocking Valley from the Union Depot. Both trains leave at 7:30 a. m. Saturday and arrive in Ann Arbor at 11:30. The return trip is begun immediately after the game, arrival in Columbus being set at 11 p. m.

RATES—The day coach rates call for \$5.50 for a round trip ticket, while the parlor car fare is \$7.46. Diners are on the parlor car trains, but not on the day coaches.

Information and reservations
may be made on application to
the Athletic House.

THE OHIO SQUAD

Name	Home Town	Age	Year	Position	Weight	Height
Atkinson, Robert M.	Trenton, N. J.	26	3	Guard	176	6'
Baker, Morgan W.	Youngstown	24	3	Quarter	171	5'10"
Barratt, Fred W.	Lansing, Mich.	23	4	Center	239	6' 2"
Bell, William	Akron	20	2	Tackle	177	6' 1"
Benis, Joseph	Cleveland	19	2	Quarter	164	5'10"
Buechsenschuss, Albert	Toledo	23	3	Tackle	170	5'11½"
Campbell, Charles A.	Coshocton	19	2	Guard	165	5' 9"
Carlin, Oscar	Bryan	22	4	Guard	166	5'10½"
Carter, David	Springfield	21	3	Center	175	6' 1"
Clymer, Roy B.	Findlay	24	4	Halfback	174	6'
Cochran, E. L.	Mt. Vernon	19	2	Center	184	6'
Coffee, Charles	Salem	20	4	Halfback	164	5'10½"
Corcoran, Joseph T.	Holyoke, Mass.	19	2	Tackle	195	6' 3"
Dick, Earl H.	Cleveland	19	2	End	179	5'10½"
Dill, M. Reese	Lakewood	23	3	End	175	6' 1½"
Doyle, Burton L.	Mishawaka, Ind.	21	2	Halfback	170	6' 1"
Dunn, Donald L.	Curtice	21	4	Halfback	162	5' 5"
Farrier, Marvin E.	Dayton	21	2	End	180	6' 1½"
Fesler, Wesley E.	Youngstown	21	3	End	183	5'11½"
Fisher, Max	Cleveland	21	4	Center	175	6' 1½"
Follett, Richard	Cleveland	24	2	Tackle	175	6' 1½"
Fontaine, Lawton J.	Akron	24	3	End	184	6'
Fouch, George	Columbus	20	4	Quarter	170	5'10"
Glasser, Chester	Youngstown	24	4	Tackle	192	6' 2"
Grady, Robert	Columbus	22	2	Halfback	160	5'10"
Griffith, William A.	E. Cleveland	19	3	Guard	212	6'
Hall, John E.	Mansfield	20	2	Center	180	6' 1"
Haubrich, Robert C.	Columbus	19	2	Tackle	190	6'
Heppberger, C. E.	Atwater	22	3	Quarter	162	5'11"
Hess, Albert F. Jr.	Cincinnati	22	4	Halfback	166	6'
Hinchman, William J.	Columbus	22	4	Quarter	166	6'
Hindulak, John A.	Cleveland	18	2	Guard	182	5'11½"
Holan, J. R.	Cleveland	22	2	Guard	174	5' 8"
Holcomb, Stuart K.	Erie, Pa.	19	2	Fullback	165	5'10½"
Holman, Allen	Fairfield, Iowa	23	4	Halfback	177	5'10½"
Horn, Robert L.	Columbus	20	3	Halfback	181	6'
Hudson, Addison M.	Columbus	21	2	End	180	6' 2"
Humberstone, H. J.	Columbus	19	3	Guard	180	6' 1"
Huston, Arthur	Findlay	23	4	Halfback	163	5'10"
Kabealo, Charles L.	Youngstown	21	2	Guard	176	5'10½"
Kazmerchak, Charles D.	Nanticoke, Pa.	24	2	Guard	180	5'10"
Kile, Eugene M.	Marysville	21	2	Guard	185	5'10"
Kovic, Joseph	Warren	20	2	End	174	5'11"
Lanzendorfer, George A.	Cleveland	19	3	Center	201	5'10"
Larkins, Richard C.	E. Liverpool	21	3	Tackle	184	6'
Larson, Harry E.	Bridgeport, Ct.	23	2	Guard	206	5' 9½"
Lemon, George H.	Toledo	22	4	Tackle	197	6' 2"
MacBride, Judge	Columbus	20	4	Halfback	158	5' 9"
McClure, Donald L.	Toledo	22	4	Fullback	172	5'11"
McConnell, Arden L.	Massillon	22	3	Halfback	170	6' 1½"
McKee, Harold M.	Warren	22	2	Halfback	170	5'10"
Mack, David	Youngstown	23	3	Halfback	177	5'10½"
Marsh, George C.	Cleveland	26	2	Tackle	208	6' 1"
Nesser, William H.	Reynoldsburg	21	3	Halfback	163	5' 7"
Nicklaus, Frank E.	Columbus	19	3	Tackle	190	6' 2½"
Ohsner, Clarence S.	Columbus	22	3	Fullback	186	5'11"
O'Shaughnessy, Joseph J.	Columbus	20	4	End	184	6' 1"
Peterson, L. B. Jr.	Steubenville	20	2	End	171	6'
Plesko, Stanley	Norwalk	25	4	Guard	187	5' 8½"
Rabenstein, Howard P.	Lockland	20	2	End	160	5'11"
Reboullet, Laverne	Dayton	22	3	Guard	170	5'11"
Redhead, Orin	Cleveland	21	2	Tackle	195	6' 2"
Ross, John	Columbus	19	2	Guard	180	5' 8"
Sattler, Charles L.	Mansfield	20	3	Guard	195	5' 9½"
Selby, Sam	W. Middletown	21	3	Guard	180	5'11"
Slaughter, David R.	Louisville, Ky.	20	2	Guard	170	6'
Spitler, Charles	Carey	19	2	Back	165	5' 8½"
Stout, C. E.	Dayton	19	2	Center	183	5'11½"
Taylor, Russell E.	Sandusky	20	3	Fullback	168	5'10½"
Thompson, Carl R.	Columbus	19	2	Guard	184	5'10"
Ujhelyi, Joseph	Lorain	23	4	Fullback	198	5'10"
Von Derau, John	Dayton	20	2	Center	168	5' 9"
Walkup, Joseph K.	Columbus	20	3	Halfback	164	5'11"
Weaver, J. Edward	Lima	18	2	End	185	6' 3"
White, Robert	Columbus	19	2	Guard	237	6' 1"
Worstell, Hillis	Bloomdale	19	2	Tackle	178	6' 2½"
Wyer, Paul H.	Orrville	21	3	Halfback	175	5'10½"
Zeckhauser, Joseph M.	Columbus	19	2	Tackle	206	5'11"

NOTE: The figure in the year column denotes year in school and not number of years on squad.

After The Game - -

Everybody goes to THE NEIL HOUSE

THE NEIL HOUSE is the recognized center of all University activities. Students and Grads alike choose this well appointed and attractive hostelry as the logical place for their celebrations and the many happy reunions that inevitably take place after the game.

The Neil House is famous for its excellent cuisine and service. Special Luncheons and

Dinners are served every day at moderate prices.

There is dancing every evening to Dick Fidler's Orchestra.

In the Coffee Shop appetizing and expertly prepared foods are served at prices agreeable to the most conservative.

Your visit in Columbus cannot help but be a pleasant one if you stay at the Neil House.

In Columbus It's

THE NEIL HOUSE

TOM A. SABREY, Manager

"ACROSS FROM THE CAPITOL"

VERCOE & COMPANY

201 Huntington Bank Building

TELEPHONE, ADAMS 7131

MEMBERS

New York Stock Exchange
Pittsburgh Stock Exchange
Chicago Board of Trade

Associate Members
New York Curb Exchange

DIRECT WIRES

to

New York, Cleveland, Chicago, Cincinnati,
Pittsburgh, Detroit

DANCE

TOMORROW NIGHT AT

(Sunday, Oct. 13th)

VALLEY DALE

Columbus' Most Refined Collegiate Dance Place

*Formal Opening of the
New Rainbow Room with*

HENRY THIES

and his Victor Recording Orchestra

9 to 1

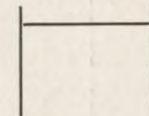
Admission \$2.00 per couple

DANCING NIGHTLY

MARION McKAY and his Greater California Orchestra in The New Rainbow Room.

PROBABLE LINE-UPS

OHIO STATE



Right Half
Holman (10)
177 lbs.

Fullback
Holcomb (7)
165 lbs.

Left Half
Horn (13)
181 lbs.

Quarterback
Fouch (9)
170 lbs.

Right End Fesler (30) 183 lbs.	Right Tackle Haubrich (37) 190 lbs.	Right Guard Selby (29) 180 lbs.	Center Barratt (44) 239 lbs.	Left Guard Ujhelyi (43) 198 lbs.	Left Tackle Marsh (39) 208 lbs.	Left End O'Shaughnessy (41) 184 lbs.
--------------------------------------	---	---------------------------------------	------------------------------------	--	---------------------------------------	--

SCORE CARD

	FIRST QUARTER	SECOND QUARTER	THIRD QUARTER	FOURTH QUARTER	TOTAL
OHIO STATE					
IOWA					

LENGTH OF QUARTERS—15 MINUTES

IOWA

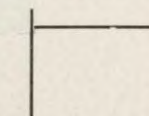
Left End Rogge (48) 175 lbs.	Left Tackle Westra (36) 201 lbs.	Left Guard Roberts (40) 183 lbs.	Center Magnussen (37) 182 lbs.	Right Guard Myers (33) 180 lbs.	Right Tackle Ely (56) 215 lbs.	Right End Reedquist (43) 175 lbs.
------------------------------------	--	--	--------------------------------------	---------------------------------------	--------------------------------------	---

Quarterback
Pignatelli (27)
185 lbs.

Left Half
Farroh (30)
185 lbs.

Fullback
Hagerty (12)
180 lbs.

Right Half
Glassgow (17)
170 lbs.





TKE House, 234—17th Ave.



ΣN House, 22—16th Ave.

D. B. HUSSEY, Inc.

Building Construction

1174 West Fifth Avenue

"Don" Hussey, '17, *Pres.*

John S. Cole, '25, *Sec'y.*

BUILDERS OF THE NEW PRESS BOX

Offering Construction Service for Ohio Staters Anywhere in Ohio.



Residence Hugh E. Nesbitt, '14
2321 Yorkshire Rd.



Residence Ralph W. Hoyer, '06
320 So. Parkview Ave.

Ohio State Players' Numbers

1 Hinchman, William	18 Peterson, L. B.	34 Griffith, Wm.
2 Farrier, Marvin	19 Reboulet, Laverne	35 McConnell, Arden
3 Doyle, Burton	20 Coffee, Charles	36 Slaughter, David
4 Buechsenschuss, Albert	21 Larkins, Richard	37 Haubrich, Robert
5 Campbell, Charles	22 Fontaine, Lawton	38 Carlin, Oscar
6 Huston, Arthur	23 Taylor, Russell	39 Marsh, George
7 Holcomb, Stuart	24 Weaver, Ed.	40 Ohsner, Clarence
8 Dill, M. Reese	25 Hess, Albert	41 O'Shaughnessy, Joe
9 Fouch, George	26 Worstell, Hillis	42 Bell, Wm.
10 Holman, Allen	27 Kabealo, Charles	43 Ujhelyi, Joseph
11 Follett, Richard	28 Kile, Eugene	44 Barratt, Fred
12 McClure, Donald	29 Selby, Sam	45 Glasser, Chester
13 Horn, Robert	30 Fesler, Wesley	46 Humberstone, H. J.
14 Grady, Robert	31 Carter, David	47 Larson, Harry
15 Benis, Joseph	32 Von Derau, John	48 Fisher, Max
16 Baker, Morgan W.	33 Hall, John	49 Hudson, Addison
17 Nesser, Wm.		

OFFICIALS

Referee—JAMES MASKER, Northwestern

Umpire—JOHN J. SCHOMMER, Chicago

Field Judge—J. J. LIPP, Chicago

Head Linesman—FRED YOUNG, Illinois Wesleyan



Iowa Numbers

10 Thomas, Brice L.	34 Willer, John F.	56 Ely, Harold E.
11 Nelson, O. Elmo	35 Gilchrist, John M.	57 Higdon, Grover E.
12 Hagerty, Loris J.	36 Westra, Peter S.	58 Tousey, Orville H.
14 Hickman, Randahl F.	37 Magnussen, Marcus J.	59 Jensvold, Lloyd V.
15 Kelsh, Matt L.	38 Fuhrman, John J.	60 Jensvold, Leo B.
16 Merten, Francis A.	39 Piersel, Don H.	61 Hantelmann, Harold E.
17 Glassgow, Willis A.	40 Roberts, Fred E.	62 Handorf, Everet C.
18 Healy, J. Frank	41 Pinkerton, John P.	63 Hart, James O.
19 Story, Raymond E.	42 Weaver, Robert G.	65 Graham, James C.
20 Pape, Oran H.	43 Reedquist, Lawrence A.	67 Figg, James S.
21 Leeka, Seward C.	44 Sansen, Oliver M.	68 Eshleman, Harold R.
22 Hauge, Gerhard S.	45 Samuelson, Leo	69 Carry, Julius R.
24 Nelson, Irving L.	46 Tompkins, Silas N.	70 Johnston, George B.
25 Elting, Earl C.	47 Wendel, Carroll H.	71 Eicher, LaVerne B.
26 Mastrogany, Nick G.	48 Rogge, George R.	72 Diwokoy, Roy J.
27 Pignatelli, Carl J.	49 Trickey, Kenneth W.	74 Cox, Ray J.
28 Blickhan, Carl J.	50 Voltmer, Walter E.	75 Case, Lyman G.
29 Carlsen, Oakley L.	51 Huff, Wallace N.	76 Bryant, Leo D.
30 Farroh, Mike A.	52 Oram, Clifford L.	77 Cochran, Richard J.
31 Benjamin, Wendell P.	53 Mitchell, Floyd B.	78 Carson, Lorton R.
32 Tompkins, Douglas M.	54 Affre, Peter V.	79 Humbert, Ellis S.
33 Myers, Dennis E.	55 Carlsen, John W.	80 Hay, James B.



*A Few Familiar
Names of Residents
of Upper Arlington*

Dr. "Jack" Wilce

"Ole" Olsen

"Red" Trautman

Geo. Hauser

Honus Graf

Dr. Jack Means

and some sixty other
people connected with
the university.

The Ideal Homesite

BEAUTIFUL UPPER ARLINGTON, decked in the bright robes of Autumn, is without a doubt the most picturesque and charming community in Central Ohio. Home lovers find this village suited to their taste and purse. Nature built with inimitable skill when she created Upper Arlington. She produced a setting which, with the aid of extensive landscaping, is unsurpassed in beauty. And, too, the price of homes and homesites is well within the reach of everyone who desires the best. See Upper Arlington now. Inspect the many beautiful homes open for your inspection.

The UPPER ARLINGTON Co.

52 West Gay Street

ADams 3112

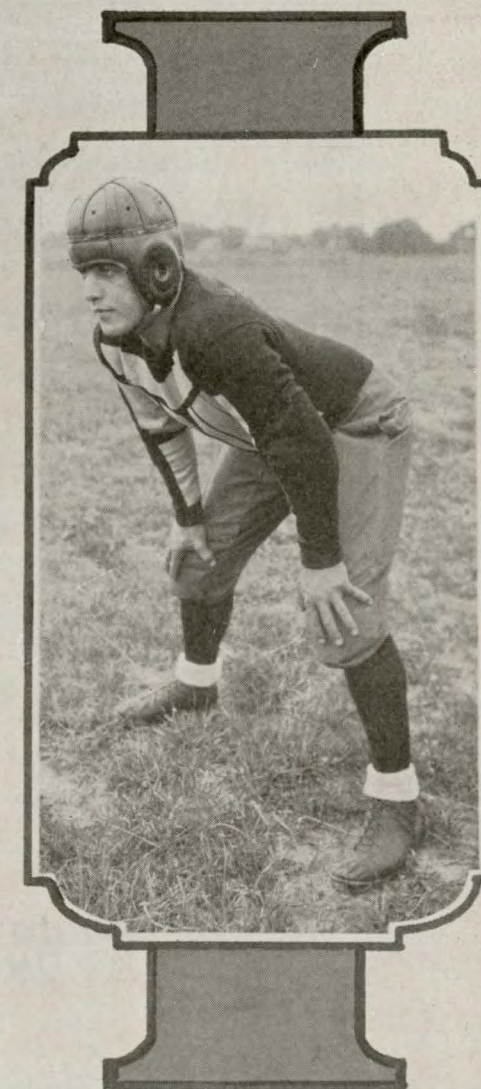
They Head the Iowa Invasion



Burton C. Ingwersen
Head Coach



Ed. H. Lauer Dir. of Athletics



Capt. Willis Glassgow
1929

FIRST in News of the World of Sport

In football, baseball, hockey, boxing, wrestling, golf, tennis, polo or track the sport columns of the Ohio State Journal will be found the most complete and most accurate. Its own staff writers cover the major games in person and their reports are supplemented by the best national authorities in each field of sport. Grant P. Ward, nationally known football writer, is covering today's game for the Ohio State Journal and is broadcasting part of the game from the Stadium today. You will want to read what he says of the game in Sunday's Journal and what he says of Western Conference football every day the rest of the season.

The big Sunday paper complete with "ROTOGRAVURE" the world in pictures

The Ohio State Journal.

SERVING COLUMBUS AND CENTRAL OHIO SINCE 1811

At your door every
morning, daily and Sunday
25c a week

On the Street Daily
Three cents
Sunday, one dime



Read the first complete
account of the game in the
Sunday Metropolitan edition
on the streets and at news-
stands every Saturday night
before 8:30 P. M.

YOU can "tackle" any proposition with the Johnston "line" and have no fear of the "score."



THE R. F. JOHNSTON PAINT COMPANY

66 East Long St.

ADams 3954

Geo E. Suck, P. E.,
Manager.

Originators of Free Parking Space
for Customers

As Time Passes

Ohio Stadium

Stands as Positive Evidence
of the Enduring Strength
Possible to Attain in Con-
crete by Using

Marble Cliff Crushed Limestone

Marble Cliff Limestone Sand



THE
MARBLE CLIFF QUARRIES CO.
Columbus, Ohio

The Best in Athletic Knitwear

*O'Shea Knit Goods are Now Recognized
as Leaders in All Athletic Contests*

The O'Shea Knitting Mills

2414 Sacramento Avenue
Chicago, Ill.

OHIO REPRESENTATIVES

THE ATHLETIC SUPPLY COMPANY

417 Huron Street
Toledo, Ohio

77 South Fourth Street
Columbus, Ohio



Songs & Yells



OHIO STATE

Yea Team! Yea Team! Yea Team!
Fight! Fight! Fight!

Ohio, Rah; Ohio, Rah;
Rah, Rah, Ohio.

O—, Ohio; O—, Ohio;
Rah, Rah, Rah, Rah, Ohio.

LOCOMOTIVE

S-s-s (3 times)
Rah, Rah, Rah, Rah;
Ohio State, Ohio State.
(Repeat three times, very slowly,
faster, very fast, all cheer at end.)

OHIO DRAG

O—HIO
O—HIO
O—H—I—O
O—HIO
A—H—H—H—H (prolonged)
(Everyone rise)
BEAT IOWA

THE SKYROCKET

A prolonged rising whistle—
Boom—, Hurrah, Ohio.
E—ee, Coma—Lioh,
Gee—ee—Wah!
Ohio.

Eee—ee, Yah.
Eee—ee, Yah.
Fight!—Fight!—Fight!—Fight!—FIGHT!
Ohio! Ohio! Ohio!
O O O—HI—O (Repeat indefinitely)

THE DIVIDED OHIO

O—O—O—O
H—H—H—H
I—I—I—I
O—O—O—O
OHIO

THE BUCKEYE BATTLE CRY

Words and Music by
Frank Crumit

In old Ohio there's a team,
That's known throughout the land;
Eleven warriors, brave and bold,
Whose fame will ever stand,
And when the ball goes over,
Our cheers will reach the sky,
Ohio Field will hear again
The Buckeye Battle Cry.

Drive! Drive on down the field,
Men of the Scarlet and Gray;
Don't let them thru that line,
We have to win this game today,
Come on, Ohio! Smash thru to victory,
We cheer you as we go;
Our honor defend
So we'll fight to the end
For Ohio.

FIGHT ON OHIO

Words and Music by
William A. Dougherty, '17 and '20

The pride of Ohio comes on the field today,
So cheer them on their way
And they will show that Ohio will fight to
the finish,
Whatever is the score
They do or die! They glorify!
Ohio ever more!

CHORUS

Fight on Ohio! Drive on down the field.
Fight on Ohio! And never, never yield.
Fight on Ohio! A touchdown now to go.
Fight, fight, fight, fight, fight, fight, fight,
For ever Ohio.

They surge on the field in a wave of
Scarlet hue.
They're fighting hard for you
So join our song resounding strong, and
cheer to the finish,
And while the echoes roar
They do or die! They glorify!
Ohio ever more!
(Repeat CHORUS)

CARMEN OHIO

Words and Music by Fred Cornell ex-'06
(Hats off, standing)

O, come, let's sing Ohio's praise
And songs to Alma Mater raise;
While our hearts rebounding thrill
With joy that death alone can still.
Summer's heat or winter's cold,
The seasons pass, the years will roll;
Time and change will truly show
How firm thy friendship—Ohio.

These jolly days of priceless worth
By far the gladdest days on earth,
Soon will pass and we not know
How dearly we love Ohio.
We should strive to keep thy name
Of fair repute and spotless fame;
So in college halls we'll grow
And love thee better—Ohio.

Alumni Chorus

Tho' age may dim our mem'ry's store,
We'll think of happy days of yore,
True to friend and frank to foe,
As sturdy sons of O-hi-o.
If on seas of care we roll,
'Neath blackened sky, o'er barren shoal,
Thots of thee bid darkness go,
Dear Alma Mater—O-hi-o.

(All in on last Ohio)

ACROSS THE FIELD

Words and Music by
W. A. Dougherty, Jr., '17

Fight that team across the field,
Show them Ohio's here
Set the earth reverberating with a mighty
cheer
Hit them hard and see how they fall;
Never let that team get the ball.
Hail! Hail, the gang's all here.
So let's beat that Iowa now.
Oh, Ohio! Oh, Ohio! Wa-hoo! Wa-hoo!
for Ohio.

IOWA

ON, IOWA

On, Iowa, proudly at the fore,
On, Iowa, on for evermore,
Every loyal son will give a rousing toast
to you,
Every loyal daughter loves you true.
On, Iowa, with your wealth untold,
A heritage to us you did unfold,
Love of family, love of friend, and love of
country, too,
Makes us proud for what you stand,
Our dear Old Gold.

(1)

Eeee—o—Wah! Wah!
Iiii—o—Wah! Wah!
FIGHT! FIGHT! FIGHT!

(2)

U—Rah! Rah! Rah!
I—O! Wah! Wah!
FIGHT—IOWA—FIGHT

(3)

Whistle—BOOM
Ahhhhh—IOWA!

(4)

Rah, yea-a-a—Glassgow!
or
Rah, yea-a-a—Glassgow!
FIGHT! FIGHT! FIGHT!

(5)

Who, Wah, Wah; Who, Wah, Wah!
Iowa, Iowa!
Who, Wah, Wah!

(6)

Rah, rah, rah, rah—
Fight, fight, fight, fight!
(repeat three times)
Iowa Fights, Iowa Fights, Iowa Fights!

(7)

Clap hands three times,
Slap knees three times,
Right fist in air—IOWA!

Ohio State University Freshman Squad

Name	Home Town	Age	Position	Weight	Height
Arnold, J. Leonard	Beaver Falls, Pa.	20	Halfback	147	5' 6½"
Ashe, Oscar J.	Hamilton	18	End	150	5' 11"
Auerhammer, Ernst	Dayton	19	Halfback	155	5' 11"
Ballard, Eugene	Princeton, W. Va.	20	Halfback	148	5' 8"
Barrett, William	Columbus	19	Tackle	189	6' 1"
Borchers, Paul	Vandalia	18	Halfback	173	5' 10"
Bryant, J. Chase	Cincinnati	20	Fullback	182	5' 11"
Buchanan, _____	Plain City	19	Halfback	166	6'
Burdeck, Wm. F.	Cleveland	20	Fullback	160	5' 9"
Campbell, Charles	Washington C. H.	18	Fullback	189	5' 11"
Carmody, Clarence	Middletown	21	End	160	5' 11"
Carroll, William	Columbus	19	Halfback	175	5' 10"
Carroll, _____	Columbus	21	Quarterback	157	6'
Cartlidge, Floyd	Toledo	22	Tackle	165	5' 11"
Ceo, Albert	Cleveland	19	End	146	5' 5½"
Chisholm, Ronald	Toledo	20	Center	164	5' 11½"
Chizek, David	Cleveland	19	Quarterback	164	5' 8½"
Cohen, Paul	Columbus	18	End	155	5' 9½"
Cohn, Barney	Youngstown	20	Tackle	174	6'
Converse, Edward	Columbus Grove	20	Tackle	165	5' 7"
Craig, George Ralph	Columbus	20	Halfback	160	5' 7"
Cremer, Martin	Parkersburg, W. Va.	18	End	172	6' 1"
Davison, John	Mantua	21	No H. S. exp.	184	6' 1"
DeMelker, Bert	Geneva	19	Fullback	183	5' 10"
Demetree, Jack	No. Canton	21	Tackle	165	5' 8"
Diehl, William	Columbus	19	Guard	180	5' 11"
Dunning, Floyd	Columbus	20	End	155	6'
Durant, Fred G.	Westerville	26	Guard	180	5' 11"
Duskell, James	Cincinnati	21	Halfback	162	5' 9½"
Ehrensberger, Carl	Columbus	18	Center	190	5' 11"
Elgin, Robert	Columbus	19	Halfback	146	5' 7½"
Embrey, Russel	Dayton	21	Halfback	165	5' 9"
Engle, Walter W.	Columbus	19	Tackle	172	6'
Essick, Henry	Cleveland	20	End	153	5' 11½"
Farber, E. M.	West Palm Beach, Fla.	18	Guard	157	5' 6"
Ferrall, Junius	Canton	18	End	180	5' 11"
Ford, Robert	Springfield	20	Halfback	165	5' 9"
Fouts, Hayden	Ashland	19	Fullback	172	6'
Franklin, Harris C.	Littletown, N. H.	19	End	185	6' 3"
Fried, Lawrence	Lakewood	19	Tackle	200	6'
Ganyaed, _____	Akron	18	Tackle	183	6' 1"
Gardner, James	Warren	19	End	170	6' 2"
Garshman, Lewis	Wadsworth	20	Guard	170	6'
Gaskill, Paul	Cleveland	20	Guard	180	5' 11"
Gedeon, Frank	Cleveland	19	Guard	176	5' 11"
Goldstein, Sidney	Brooklyn, N. Y.	19	Halfback	172	5' 8½"
Grahame, Arthur	Akron	20	Quarterback	155	5' 11"
Greenberg, Jack	Detroit, Mich.	19	Halfback	168	5' 8½"
Griggs, David L.	Chevy Chase, Md.	18	Tackle	170	5' 11"
Haid, Ralph	Hamilton	19	Guard	189	5' 10½"
Hamilton, Eugene	Columbus	19	End	161	6'
Harper, Ralph	Columbus	17	Guard	178	5' 11"
Harris, Wm. R.	Justice	22	Tackle	185	6' 2½"
Harriston, Festus	Winston Salem, N. C.	20	Halfback	170	6'
Hatton, Clifton	Columbus	19	Quarterback	135	5' 3"
Hazelton, Burton	Cincinnati	20	Tackle	150	5' 11"
Hedderly, Clyde	Akron	19	Fullback	165	5' 11"
Henson, Wm. R.	Elyria	21	Halfback	160	5' 10"
Hinchman, Lewis	Columbus	18	Halfback	165	5' 10"
Hoffer, Joe	Youngstown	22	Quarterback	170	5' 11"
Horch, Edward	Columbus	18	End	160	6' 1"
Howell, Richard	Erie, Pa.	19	Halfback	160	5' 11"
Howell, Glen	Greenville	18	Center	180	6' 2½"
Hultman, Donald	Grand Rapids, Mich.	21	Guard	205	6'
Hunt, Hayward	Croton	18	End	154	6'
Jaeger, John W.	Columbus	18	Tackle	170	6' 1¼"
Jividen, James	Racine	19	Tackle	221	6' 1½"
Johnson, Earl	Prospect	21	Center	242	6' 2"
Johnson, Gordon	Ashtabula	22	Halfback	165	5' 10"
Jones, Lloyd	Radnor	18	Quarterback	140	5' 8½"
Karch, George	Celina	19	Guard	155	5' 8½"
Keller, Charles P.	Mechanicsburg	17	Fullback	187	5' 11"
Kent, Paul	Columbus	17	Tackle	150	5' 11"
Kirk, James F.	Canton	17	Halfback	165	6'
Klauminzer, Ralph	Lakewood	21	Tackle	155	5' 10½"
Klein, Kenneth G.	Buffalo, N. Y.	17	Tackle	145	6'
Klempner, _____	Trenton, N. J.	19	Quarterback	155	5' 8"
Kraft, Howard	Columbus	17	Quarterback	145	5' 11"
Kramer, John O.	Columbus	18	Quarterback	140	5' 8"
Krumm, Tahlman	Columbus	17	Halfback	156	5' 9¾"
Kuipers, George	Sewickley, Pa.	18	Fullback	162	5' 10"

Ohio State University Freshman Squad

Name	Home Town	Age	Position	Weight	Height
Lakin, Edmund E.	Columbus	20	Tackle	175	6' 4½"
Latham, Norman	Columbus	18	Fullback	160	5' 11"
Lawrence, W. M.	Cleveland	21	Guard	279	6' 5"
Leftwich, William	Memphis, Tenn.	21	Quarterback	163	5' 9½"
Libby, Edwin	Welshfield	20	End	180	6' 1"
Lukz, Frank	Niles	21	Fullback	181	5' 9"
McBride, James O.	Lima	18	End	155	6' ½"
McCoy, Ray	Cambridge	19	Halfback	150	5' 11"
McKay, Neil H. Jr.	Pittsburgh, Pa.	19	Halfback	186	6'
Maike, Arthur	Fremont	23	Tackle	181	5' 10"
Mandula, George	Cleveland	19	Fullback	185	6' ½"
Marshall, Max	Xenia	20	End	175	5' 10½"
Maurer, Harry	Canton	21	Halfback	157	5' 8½"
Maurer, Frederic	Middletown	18	Quarterback	133	5' 7"
Mazaika, John	Spring Valley, Ill.	18	Guard	175	5' 11"
Meek, Robert	Youngstown	19	Center	160	5' 11½"
Meincer, _____	Fremont	19	Tackle	170	6' 1"
Mensel, Richard	Columbus	21	End	170	6'
Miller, Roger	Greenville	18	Halfback	160	5' 11"
Miller, Samuel	Ashville	18	Fullback	162	5' 11"
Miller, Walter	Columbus	18	Guard	181	6'
Mirick, Chester	Columbus	19	Halfback	164	5' 8½"
Moscow, John	Detroit, Mich.	20	Quarterback	130	5' 4½"
Mosovich, Sol	Trenton, N. J.	19	End	170	5' 9"
Munster, Harry	Columbus	19	Halfback	165	5' 10"
Nasman, _____	Youngstown	19	Center	175	6'
Neal, Boyce	Jonesboro, Ark.	20	Quarterback	150	5' 7"
Noice, Arthur	Lancaster	19	Quarterback	171	5' 10"
Novak, _____	Toledo	22	Halfback	158	5' 7"
Pandorf, Charles	Gary, Ind.	23	Fullback	160	5' 7"
Pereny, Andrew	Detroit, Mich.	20	Guard	165	5' 7½"
Pettay, Dwight	Flushing, Ohio	17	Tackle	191	5' 11"
Phelps, Roger	Elyria	20	Tackle	180	6' 1½"
Phillips, Wm. J.	Pittsburgh, Pa.	18	Guard	155	5' 10"
Pickens, Paul G.	Columbus	20	End	174	6' 2"
Pirk, Bernard	Gates Mills	19	Tackle	155	5' 7"
Plematras, James	Coshocton	20	Guard	177	5' 9"
Popeko, Joe	Akron	19	Guard	170	5' 10½"
Post, Clarke C.	Spencerville	20	End	160	5' 11"
Reilly, Robert	Newark, N. J.	21	Halfback	155	5' 8½"
Richardson, S. W.	Mansfield	20	Tackle	180	6' 3½"
Rowland, James	Steelton, Pa.	20	Tackle	172	5' 10"
Russ, _____	Toledo	20	End	171	6' 1½"
Salvaterra, Joe	Bellaire	21	End	170	5' 11"
Schreck, Frank	Columbus	18	Fullback	170	5' 11"
Schulman, Sanford	Cleveland	18	Guard	207	6' 1"
Scott, Thomas	Mansfield	19	Guard	175	6'
Sells, Clark	Hilliards	21	Tackle	187	5' 11½"
Sheridan, Phillip	LaRue	18	Tackle	174	6'
Shuff, Leslie	Columbus	18	Quarterback	154	5' 10"
Shurtz, Hubert	W. Lafayette	18	End	160	6' 2"
Sirilo, Andrew	Gorfield	19	Guard	168	5' 9"
Smith, Richard	E. Chicago, Ind.	17	Center	192	6' 2½"
Smith, T. Franklin	Thivener	19	Quarterback	135	5' 10"
Sola, Olavi	Erie, Pa.	19	Fullback	190	5' 11½"
Steinberg, Bernard	Cleveland	19	Guard	165	5' 11½"
Stough, John	Findlay	22	End	170	5' 11"
Steiner, Henry	Lima	20	Tackle	180	6'
Strong, Walter	Irwin, Pa.	20	Halfback	150	5' 9"
Tallman, Herbert	New Medford, Mass.	17	Guard	177	5' 10½"
Tarka, Stanley	New Haven, Conn.	19	Halfback	143	5' 4"
Thomas, Edgar L.	Westfield, N. Y.	18	Quarterback	150	5' 11½"
Thompson, Richard	Warren	19	Halfback	165	5' 8¾"
Tomm, Louis	Massillon	23	No. H. S. Exp.	159	6' 1¼"
Treat, Edwin	Blandford, Mass.	21	Tackle	197	6' 1"
Van Blaricom, Robt.	Salem	19	Tackle	181	6'
Varner, Martin	Lima	18	Fullback	196	5' 11"
Voller, Jack	Springfield	18	End	160	6' 1"
Walker, Roger	Sanford, Maine	19	Guard	155	5' 8"
Wallace, Ray	Spratt	18	Tackle	171	5' 7"
Weindorf, Arthur	Erie, Pa.	20	End	158	5' 9½"
Welch, Carlton E.	Parkersburg, W. Va.	19	Halfback	160	5' 8"
Welever, Watson	Toledo	19	Fullback	187	5' 10"
Werner, Irving	Newark, N. J.	20	End	176	5' 11"
Wilcox, D. C.	LaRue	18	Center	187	6' ¾"
Williams, Paul	Columbus	19	Halfback	151	5' 9"
Wolfe, Donald	Clarksville	19	Quarterback	127	5' 7"
Wolfe, P. K.	Ashland, Ky.	22	End	190	6' 2"
Woodward, Robert	Columbus	19	Tackle	185	6' 1½"
Woxman, Carl	Dayton	17	Tackle	190	6'
Zink, Walter	Fremont	22	End	175	6' 1½"
Zeigler, Paul	Radnor	18	Quarterback	153	5' 9"

Where to Dine?

FALLONEL TEA ROOM

8 Sixteenth Avenue

HOURS: 11-8

The Little Gray House 277 E. Broad Street

A Quaint Place With
Wonderful Food

"THE ENSORS"

650 High St., Worthington, Ohio

"An Unique Place to Eat"

FIVE COURSE CHICKEN DINNER \$1.50

Reservations Requested

Telephone 164

ZULU HUT

562 East Broad Street
MAIN 8779

A Wonderful Place to Eat : Distinctive Atmosphere

Delicious Fried Chicken, Steak, Sugar Cured Ham, Dinners,
Luncheons, Private Parties, Private Dances

REASONABLE PRICES

JOLLY GARGOYLE DOWN TOWN

"Invites you to a Delightful Old World Nook to Dine---Excellent Food---
Convenient to all Theatres and Hotels OPEN ALL NIGHT"

A la Carte
Famous Club Sandwiches
Salads - Pies - Cake
Iced Drinks

CHICKEN N' WAFFLES

NOON LUNCHEON 50c

DOWN THE ALLEY BY THE CHAMBER OF COMMERCE

Table d'Hote
\$1.00-\$1.50

Steaks - Chops - Chicken



The Purple Cow

Elaborately decorated, this new dining
club will open with appropriate ceremonies
about

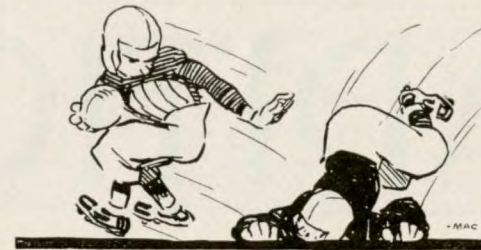
October 25

Where genuine hospitality combined with real home
cooked food, one hundred per cent service and com-
fortable accommodations will make this your log-
ical stopping place.

Hotel Chittenden

H. F. JOHNSON, Manager

OTHER GAMES TODAY



IN OHIO



Capital at Baldwin-Wallace
Kenyon at Cincinnati
Wilmington at Dayton
Toledo at Findlay
Kent at Heidelberg
Case at Hiram
Wesleyan at Miami
Mt. Union at Oberlin
Cedarville at Ohio Northern
Wesleyan at Ohio University
W. Va. Wesleyan at St. Xavier
Lincoln Univ. at Wilberforce
Denison at Wittenberg
Carnegie at Western Reserve

IN THE EAST



Vermont at Boston University
Wash. and Jefferson at Bucknell
Wesleyan at Columbia
Maine at Connecticut Agri.
Alleghany at Dartmouth
St. Louis at Georgetown
New Hampshire at Harvard
Fordham at New York University
Va. Poly. Inst. at Pennsylvania
Marshall at Penn State
W. Va. at Pittsburgh
Brown at Princeton
Nebraska at Syracuse
Worcester at Trinity
Notre Dame at Navy
Davidson at Army

IN THE SOUTH



Florida at Alabama Poly.
Texas at Arkansas
St. Edwards at Baylor
Texas Christian at Centenary
Lane at Fisk
Yale at Georgia
North Carolina at Georgia Tech.
Washington and Lee at Kentucky
Sewanee at Louisiana State
South Carolina at Maryland
Creighton at Oklahoma
Oklahoma Agri. at Oklahoma City
Mississippi at Tennessee
Kansas Agri. at Texas Agri.
Mississippi Agri. at Tulane
Virginia Seminary at Va. State

IN THE WEST



Cal. Tech. at Arizona
Montana State at Brigham Young
Wash. State at California
Indiana at Chicago
Colorado Agri. at Colorado College
Des Moines at Depauw
Tulsa at Detroit
Bradley at Illinois
Monmouth at Illinois College
Missouri at Iowa State
Coe at Loyola
Grinnell at Marquette
Vanderbilt at Minnesota
South Dakota at North Dakota
San Diego at Redlands
Stanford at Univ. of Cal. (So. Br.)
Southern California at Washington
Drake at Washington University
Northwestern at Wisconsin
Michigan at Purdue

OHIO STATE TRADITIONS



First Ohio State Team, 1890



First Michigan game on
Ohio Field, 1901



When Ohio Scored its First
Touchdown on Michigan,
1908

SWAN LINEN

Before Ohio State was ten years old Swan Linen was being used on the university campus.

It has been a standard at Ohio State ever since. It is now used in the official stationery of the university, as it also is at the University of Michigan, Ohio's traditional athletic rival.

Ohio State students still find Swan Linen unequalled for note books, thesis paper, typewriter paper and stationery.

Many Ohio alumni, now discriminating men of affairs who appreciate having the best, use Swan Linen in their business stationery. They know that its distinctive appearance, beautiful whiteness, strength and writing surface is unsurpassed.

Your printer, lithographer, engraver or stationer can furnish Swan Linen. Ask him to use it in YOUR stationery. You will find no paper that will please you more.

The Central Ohio Paper Company

Columbus Cleveland Toledo Dayton
Indianapolis Detroit Pittsburgh
Lima Akron Huntington Wheeling

"Everything in Paper"

Ohio State in the Big Ten

1913	1919	1924
Ohio State 58—Wesleyan 0	Ohio State 38—Wesleyan 0	Ohio State 7—Purdue 0
" " 14—Western Reserve 8	" " 46—Cincinnati 0	" " 0—Iowa 0
" " 0—Oberlin 0	" " 49—Kentucky State 0	" " 10—Wesleyan 0
" " 6—Indiana 7	" " 13—Michigan 3	" " 3—Chicago 3
" " 0—Wisconsin 12	" " 20—Purdue 0	" " 7—Wooster 7
" " 18—Case 0	" " 3—Wisconsin 0	" " 7—Indiana 12
" " 58—Northwestern 0	" " 7—Illinois 9	" " 6—Michigan 16
		" " 0—Illinois 7
1914	1920	1925
Ohio State 16—Wesleyan 2	Ohio State 55—Wesleyan 0	Ohio State 10—Wesleyan 3
" " 7—Case 6	" " 37—Oberlin 0	" " 9—Columbia 0
" " 0—Illinois 37	" " 17—Purdue 0	" " 3—Chicago 3
" " 6—Wisconsin 7	" " 13—Wisconsin 7	" " 0—Iowa 15
" " 13—Indiana 3	" " 7—Chicago 6	" " 17—Wooster 0
" " 39—Oberlin 0	" " 14—Michigan 7	" " 7—Indiana 0
" " 27—Northwestern 0	" " 7—Illinois 0	" " 0—Michigan 10
	" " 0—California 28	" " 9—Illinois 14
1915	1921	1926
Ohio State 19—Wesleyan 6	Ohio State 28—Wesleyan 0	Ohio State 40—Wittenberg 14
" " 14—Case 0	" " 6—Oberlin 7	" " 47—Wesleyan 0
" " 3—Illinois 3	" " 27—Minnesota 0	" " 32—Columbia 7
" " 0—Wisconsin 21	" " 14—Michigan 0	" " 23—Iowa 6
" " 10—Indiana 9	" " 7—Chicago 0	" " 18—Chicago 0
" " 25—Oberlin 0	" " 28—Purdue 0	" " 13—Wilmington 7
" " 34—Northwestern 0	" " 0—Illinois 7	" " 16—Michigan 17
		" " 7—Illinois 6
1916	1922	1927
Ohio State 12—Wesleyan 0	Ohio State 5—Wesleyan 0	Ohio State 31—Wittenberg 0
" " 128—Oberlin 0	" " 14—Oberlin 0	" " 13—Iowa 6
" " 7—Illinois 6	" " 0—Michigan 19	" " 13—Northwestern 19
" " 14—Wisconsin 13	" " 0—Minnesota 9	" " 0—Michigan 21
" " 46—Indiana 7	" " 9—Chicago 14	" " 13—Chicago 7
" " 28—Case 0	" " 9—Iowa 12	" " 0—Princeton 20
" " 23—Northwestern 3	" " 6—Illinois 3	" " 61—Denison 6
	" " 28—Camp Sherman 0	" " 0—Illinois 13
1917	1923	1928
Ohio State 49—Case 0	Ohio State 24—Wesleyan 7	Ohio State 41—Wittenberg 0
" " 53—Wesleyan 0	" " 23—Colgate 23	" " 10—Northwestern 0
" " 40—Northwestern 0	" " 0—Michigan 23	" " 19—Michigan 7
" " 67—Denison 0	" " 0—Iowa 20	" " 13—Indiana 0
" " 26—Indiana 3	" " 42—Denison 0	" " 6—Princeton 6
" " 16—Wisconsin 3	" " 32—Purdue 0	" " 7—Iowa 14
" " 13—Illinois 0	" " 3—Chicago 17	" " 39—Muskingum 0
" " 0—Auburn Poly. In. 0	" " 0—Illinois 9	" " 0—Illinois 8
" " 28—Camp Sherman 0		

Fraternities and Sororities

The beautiful Georgian Ball Room and Private Dining Rooms of this Hotel are ideal for your social functions.

Dances, Dinner Dances and Dinners Carefully Served at Moderate Prices

HOTEL FORT HAYES

See the beautiful display of furniture and paintings purchased from the estate of the late Madam Sarah Bernhardt in our lounge and mezzanine.

The Huffman - Wolfe Co.

HEATING AND PLUMBING

Contractors and Engineers

In more than thirty-five buildings throughout the University grounds and in hundreds of the best buildings throughout Ohio is to be found plumbing and heating equipment furnished and installed by The Huffman-Wolfe Co., Heating and Sanitary Engineers.

"OUR RESPONSIBILITY IS YOUR PROTECTION"

RENT

WHY BUY?

White Coats, Table Linen, Napkins,
Uniforms, Aprons, Towels, and Everything
in Linen

Special Service to Rooming Houses, Fraternities, etc.

Sheets, Pillow Cases, Bed Spreads, and Towels

THE ATLAS LAUNDRY AND LINEN SUPPLY

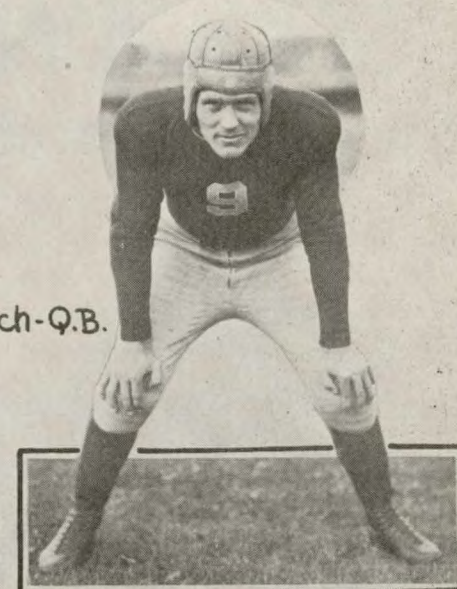
MAin 4363

161-165 North Grant Avenue

MAin 4364

Men of Ohio

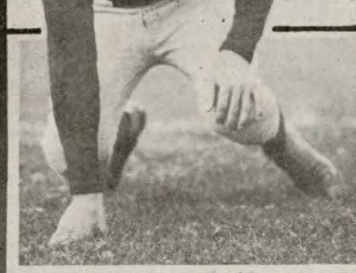
Fouch-Q.B.



McClure-H.B.



Hess-H.B.



Marsh-T.



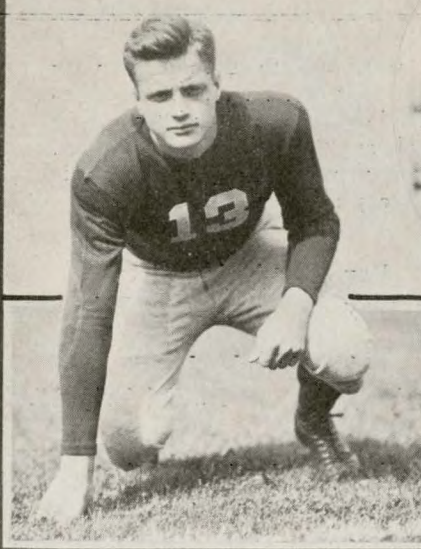
Huston-H.B.



McConnell-H.B.



Horn-F.B.



A Complete Line
OF
Sporting Goods



The Ben Ratner Co.
65 East Gay St.

Ben Ratner, '20, President
Art Maushund, Secretary-Treasurer

TIM'S

At the Sign of the Football

Where Food is Good
and Courtesy and
Service a habit

**TIM'S RESTAURANT AND
COFFEE SHOP**

1856-1864 N. High
North of Main Entrance to Campus

On the Hawkeye Line



Westra-T.



Myers-G.



Reedquist-E.



Ely-T.



Gilchrist-T.

Scores Every Time
The New

PIONEER LIMITED

Chicago-Twin Cities

Silent roller bearings... coil spring mattresses... individual bedrooms... observation and club cars... radio... valet... ladies' lounge and a host of other distinguishing features make this a remarkable train. Leaves Chicago 8:30 p. m. (Central Time).

Others in the famous fleet of trains between Chicago and St. Paul-Minneapolis are The **Day Express**, The **Columbian**, The New **Olympian**, and The **Bat**—over the shortest and only double-tracked route via Milwaukee—the water level route.



Information, tickets, reservations at

CINCINNATI OFFICE

204 Dixie Terminal Bldg., Phone Main 5010
G. C. Armstrong, General Agent

The MILWAUKEE ROAD
ELECTRIFIED OVER THE ROCKIES TO THE SEA 641

Do Your Traveling In a Buckeye Stage

When you come to Columbus to see Ohio State win or travel to Cleveland or Cincinnati or intermediate cities, always travel by Buckeye Stage. It's more convenient, more comfortable and less expensive.

Fare to Cincinnati

\$2.75 One Way Round Trip \$5.00

To Cleveland

\$3.75 One Way Round Trip \$7.00

*Inquire at the Local Bus Station
for Information*

BUCKEYE STAGES, INC.
Terminal, 41 E. Rich St.

MAin 4411

ADams 7183



Now for the Big Show!

The Terry Engraving Co.
214-216 Oak Street
Columbus Ohio

Printing Plates
Color Work
Advertising Art
Photographers

Announcements by the Management

A LOST AND FOUND DEPARTMENT has been established on the first floor in the Southeast Tower of the Stadium. Articles found should be turned over to the ushers or left at the office.

ONLY ONE CONCESSION, that covering the sale of refreshments, is licensed by the Athletic Board and thereby privileged to sell within the Stadium.

DOCTORS may leave their seat numbers with the clerk stationed in the southeast tower and will be notified in case a call is registered for them.

EVERY COURTESY should be extended visiting teams and officials.

REQUESTS FOR INFORMATION REGARDING TICKETS for games either at home or abroad should be addressed to Football Ticket Office, Ohio State University.

MISCONDUCT OR DISCOURTESY on the part of attendants should be reported to L. W. St. John, Director of Athletics.

THIS PROGRAM IS PUBLISHED under the direction of the Athletic Department. Address inquiries concerning information or space to the Director of Programs, Athletic House, Ohio State University.

COMFORT STATIONS are located on each floor level.

A FIRST AID STATION with registered nurses in attendance is located on the second floor level of the northwest tower.

A REST ROOM FOR WOMEN with a maid in attendance is located on the second floor of the northwest tower.

ALL GAMES START promptly at 2:00 P. M., Eastern Standard Time.

FOUR PAY TELEPHONE STATIONS are located on the ground floor, two on each side of the Stadium.

TAXI service is available north of the Stadium parking space.

FREE LINE-UP SHEETS are provided by the Management for all spectators. These sheets, which contain all playing numbers, will be found underneath the Stadium at all approaches to the ramps.

Sport Equipment from an Athletic Family



SPALDING made the first football, the first basketball, the first tennis ball, the first golf ball, the first pair of golf shoes ever made in this country. Spalding has been making authentic athletic equipment for 53 years.

No other Sport Equipment in the world has a background like this. You can choose your complete sport outfit with the comforting knowledge that everything is exactly right.



A. G. Spalding & Bros.

120 East Broad Street



Zinn & Robbins

Real Estate Investment

PROPERTY MANAGEMENT

THE **Z&R** INSURANCE AGENCY CORPORATION THE **Z&R** MTGE. CORP.
REAL ESTATE MORTGAGE LOANS

General Insurance

79 East State St.

Your Photo from

The Old Reliable

Baker Art Gallery

Rich and High Sts.

WILL BE BEST

The largest, finest and best equipped gallery
in America.

The New Virginia Hotel

Third at Gay

*Two Large Ballrooms
for Dancing*

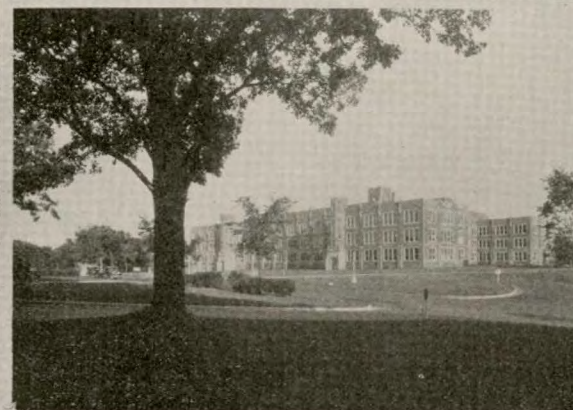
Coffee Shop and Grill

H. B. SIEGFRIED, Manager

On the Hawkeye Campus



Administration



Laboratories



Liberal Arts



East Campus



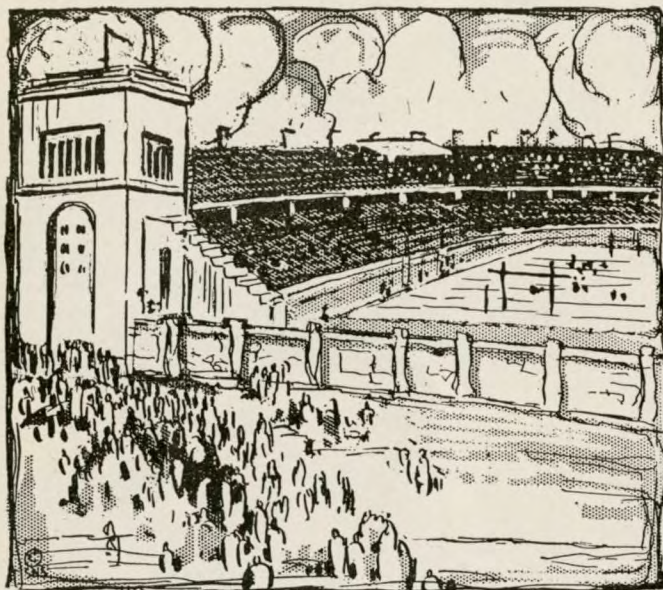
Field House



Union

F-M

TWO MORE DISTINCTIONS for COLUMBUS....



*Columbus has--
One of America's
Greatest Stadiums*

*One of America's
greatest news-
paper coverages*

UNDoubtedly, the development of large stadiums in recent years is a good index of the popularity of the greatest American Sport ... FOOTBALL.

The tabulation to the right discloses that Columbus has one of the greatest stadiums in America with a seating capacity of 75,000.

It is something of a coincidence that this same figure comes close to representing the number of occupied dwelling units in Columbus . . . specifically 73,636.

For the purpose of making an interesting comparison, let each Stadium seat represent one of these occupied homes.

Greater Columbus subscribers of The Columbus Dispatch would fill 61,980 of these seats.

In other words more than 84% of all the occupied homes in Columbus take the Dispatch—and this is a good index of the popularity of "Ohio's Greatest Home Daily."

In cities similar in size to Columbus this is one of the *greatest* city coverages in America.

The famous stadiums of America with their seating capacities:

CITY	LOCATION	SEATING CAPACITY
Chicago	Grant Park	165,000
Berkeley	University of California	90,000
Palo Alto	Stanford University	88,000
Ann Arbor	University of Michigan	86,000
New York	Yankee Stadium	82,000
New Haven	Yale University	80,000
Baltimore	Venable Stadium	78,000
Philadelphia	University of Pennsylvania	76,000
COLUMBUS	OHIO STATE UNIVERSITY	75,000
Los Angeles	Los Angeles	75,000
Pittsburgh	University of Pittsburgh	75,000
Chicago	University of Chicago	60,000
Urbana	University of Illinois	60,000
Chicago	Comiskey Park	60,000
New York	Polo Grounds	55,000
Evanston	Northwestern University	55,000
Minneapolis	University of Minnesota	55,000

Columbus Dispatch

["Ohio's Greatest Home Daily"]

**Total Net Paid Daily
Circulation**

>125,513<

University of Iowa Football Squad

Name	Home Town	Age	Year	Position	Weight	Height
Affre, Peter V.	Quincy, Ill.	26	3	Halfback	150	5' 8"
Benjamin, Wendell P.	Waterloo	23	3	Tackle	183	5' 11"
Blickhan, Carl J.	Quincy, Ill.	22	2	End	180	6' 2"
Bryant, Leo D.	Perry	21	2	Center	190	5' 11"
Carlsen, John W.	Clinton	20	3	Tackle	205	6' 2"
Carlsen, Oakley L.	Clinton	22	4	End	197	6' 4"
Carry, Julius R.	Chicago, Ill.	20	2	End	200	6' 3"
Carson, Lorton R.	What Cheer	22	3	End	185	5' 11"
Case, Lyman G.	Grinnell	19	2	Center	175	5' 11"
Cochran, Richard J.	Fairfield	19	2	Guard	168	5' 7"
Cox, Ray J.	Clear Lake	23	3	Guard	195	6'
Diwocky, Roy J.	Council Bluffs	18	2	End	170	6'
Eicher, Laverne B.	Wayland	19	2	Halfback	175	5' 11"
Elting, Earl C.	Keokuk	20	3	Center	218	6' 2"
Ely, Harold	Des Moines	19	3	Tackle	215	6' 1"
Eshleman, Harold R.	Sterling, Ill.	19	2	Quarter	165	5' 11"
Farroh, Mike A.	Michigan City, Ind.	21	3	Halfback	185	6' 1"
Figg, James S.	Muscatine	19	2	End	160	6'
Fuhrman, John J.	Dubuque	22	4	Guard	190	6'
Gilchrist, John M.	Keosauqua	24	4	Tackle	220	6' 2 1/2"
Glassgow, Willis A.	Shenandoah	22	4	Halfback	170	5' 9"
Graham, James C.	Waterloo	18	2	Fullback	160	5' 9"
Hagerty, Loris J.	Blanchard	23	4	Fullback	180	5' 9"
Handorf, Everet C.	Coin	20	2	Halfback	170	6' 2 1/2"
Hantelmann, Harold E.	Dubuque	19	2	Guard	194	6' 3"
Hart, James O.	Los Angeles, Cal.	22	2	End	175	5' 11"
Hauge, Gerhard S.	Des Moines	21	3	Halfback	171	5' 11"
Hay, James B.	Waterloo	21	3	End	155	5' 10"
Healy, J. Frank	Cedar Rapids	25	2	End	170	5' 9"
Hickman, Randahl F.	Shariton	20	2	Halfback	160	5' 8"
Higdon, Grover E.	Decatur	22	3	Guard	178	6'
Huff, Wallace N.	Sioux City	19	2	Halfback	160	5' 9"
Humbert, Ellis S.	Milton	21	2	Tackle	230	6' 1"
Jensvold, Leo B.	Emmetsburg	21	3	Quarter	165	5' 8"
Jensvold, Lloyd V.	Emmetsburg	21	3	Quarter	160	5' 8"
Johnston, George B.	Estherville	21	2	Halfback	190	5' 10"
Kelsh, Matt L.	Dougherty	24	4	End	170	5' 11"
Leeka, Seward C.	Independence, Mo.	22	3	End	180	6'
Magnussen, Marcus J.	Clinton	22	3	Center	182	6'
Mastrogany, Nick G.	Davenport	21	3	End	172	6'
Merten, Francis A.	Davenport	21	2	End	172	6'
Mitchell, Floyd B.	Highmore, So. Dak.	20	3	End	170	6'
Meyers, Dennis E.	Algona	25	4	Guard	180	6' 1"
Nelson, Irving L.	Omaha, Neb.	22	3	Quarter	165	5' 10"
Nelson, O. Elmo	Clearfield	21	2	Halfback	170	5' 10"
Oram, Clifford L.	Los Angeles, Cal.	20	2	Guard	170	5' 8"
Pape, Oran H.	Dubuque	25	3	Halfback	170	6'
Piersel, Don H.	Rose Hill	20	2	Tackle	196	6' 1"
Pignatelli, Carl A.	Rock Falls, Ill.	21	4	Quarter	185	5' 9"
Pinkerton, John P.	Des Moines	20	2	Guard	182	5' 11"
Reedquist, Lawrence A.	Ottumwa	22	3	End	175	5' 11"
Roberts, Fred E.	Knoxville	22	4	Guard	183	6'
Rogge, George R.	Ida Grove	21	3	End	175	6'
Samuelson, Leo	Decorah	19	2	Tackle	186	6' 1"
Sansen, Oliver M.	Alta	21	2	Fullback	180	6' 1"
Story, Raymond E.	Dubuque	20	2	Center	178	6' 2"
Thomas, Bryce L.	Mason City	21	3	Fullback	175	5' 11"
Tompkins, Douglas M.	Marengo	20	2	Guard	220	6' 4 1/2"
Tompkins, Silas N.	Marengo	19	2	Tackle	200	6'
Tousey, Orville H.	Oak Park, Ill.	21	3	Fullback	178	6' 2"
Trickey, Kenneth W.	Iowa Falls	20	2	End	170	5' 9"
Voltner, Walter E.	Sigourney	21	3	Guard	175	5' 7"
Weaver, Robert G.	Joliet, Ill.	20	2	End	175	6'
Wendel, Carroll H.	Smithland	19	3	End	170	6' 1"
Westra, Peter S.	Sheldon	22	4	Tackle	201	6'
Willer, John F.	Quincy, Ill.	20	2	Halfback	157	5' 11"



THE **HISS** STAMP CO.

195 East Long St.

HERMAN A. BLOOM
President and General Manager

**Rubber, Brass, Steel Marking
Devices and Bronze
Tablets**

COLUMBUS, OHIO

Medals

Trophies

Class Rings and Pins

*Engraved Stationery
and
Announcements*

Auld's, Inc.

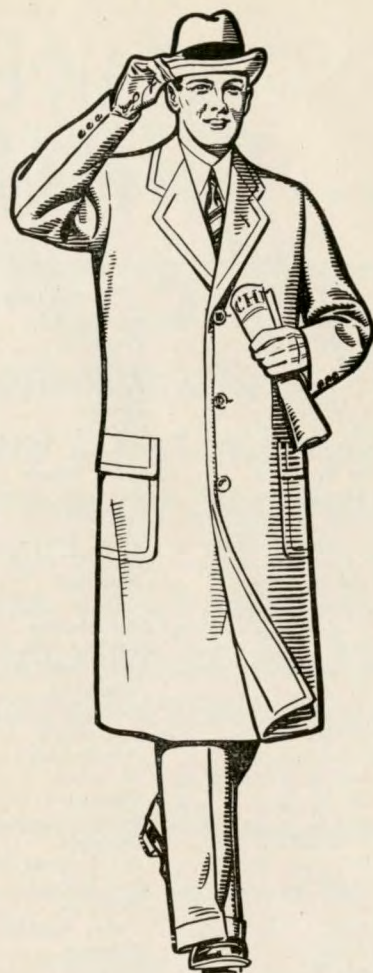
Manufacturing Jewelers

New Factory and General Offices:

1201-1221 Essex Ave.
COLUMBUS, OHIO



*Send for illustrated folder of
Ohio State official graduate's rings*



RICHMAN'S TOPCOATS

Richman's topcoats accurately interpret the trend of fashion adopted by the best dressed men of America's foremost universities. You always have the choice of any suit, topcoat or Tuxedo suit at one standard price.

All \$22.50

**RICHMAN'S
CLOTHES**

The Richman Brothers Co.
COLUMBUS STORE
15 North High Street

After the Game--

GODFREY'S COFFEE SHOP

Good Food and Good Coffee

POPULAR PRICES

No. 7 Chittenden Ave.
20 Steps from High at Chittenden

What's the Penalty?

CODE OF SIGNALS FOR FOOTBALL OFFICIALS

HANDS ON HIPS—Off side.
GRASPING OF ONE WRIST—Holding.
HORIZONTAL ARC OF EITHER HAND—Illegal motion.
SIFTING OF HANDS IN HORIZONTAL PLANE—All plays that are called off such as refusal of penalty, incompleting pass, touchback, no goal, no play, both sides off side, defense advancing with recovered fumble.
PUSHING HANDS FORWARD FROM SHOULDERS WITH HANDS VERTICAL—Interference with forward pass.
WAVING HAND BEHIND BACK—Illegal forward pass (includes ball touching ineligible player).
TOUCHING HAND TO FOREHEAD—Unnecessary roughness.
FRONT CROSS KICK—Tripping or clipping.
BRINGING PALMS OF HANDS TOGETHER IN FRONT OF FACE—Safety.
FORWARD MOVEMENT OF HANDS AND ARMS FROM BELOW HIPS—Pushing or helping runner with ball.
HAND OVER MOUTH—Failure to report, or communicating.
BOTH ARMS EXTENDED CLEARLY ABOVE HEAD—A score.

NOTE: Watch the officials when a penalty is imposed. The above signals will indicate the cause.

1913

1929

"Still the Favorite"

Herb

HENNICK'S

RESTAURANT

SODA GRILL

At the Gateway to the Campus

FAIRMONT'S

Delicia
THE BETTER

ICE CREAM

*Served
In Your Favorite Style
at Fairmont Dealers*

There's a Fairmont dealer in your neighborhood who will be pleased to serve you with your favorite flavor of Fairmont's ice cream.

All the popular flavors and a weekly special ice cream are ready in pint packages for home serving.

The
Fairmont Creamery
Company

Churners of
Fairmont's Better Butter



J. M. & W. Westwater Co.

56 East Gay Street

Dealers in China, Glass and
Silverware



Agents for

The Famous Onondaga Pottery
Syracuse China in Plain White
and Decorated



Fraternity, Club and Hotel Crest
Designs Decorated to Order

J. W. WATSON & CO.

Ford

Sales and Service

University 0831

Service Dept. Open All Night

1288 North High Street

OFFICIAL GARAGE

For

Deshler-Wallick, Neil House, and New Southern
Hotels

Washing, Polishing, and
Lubricating

Uniformed Chauffeur
Service



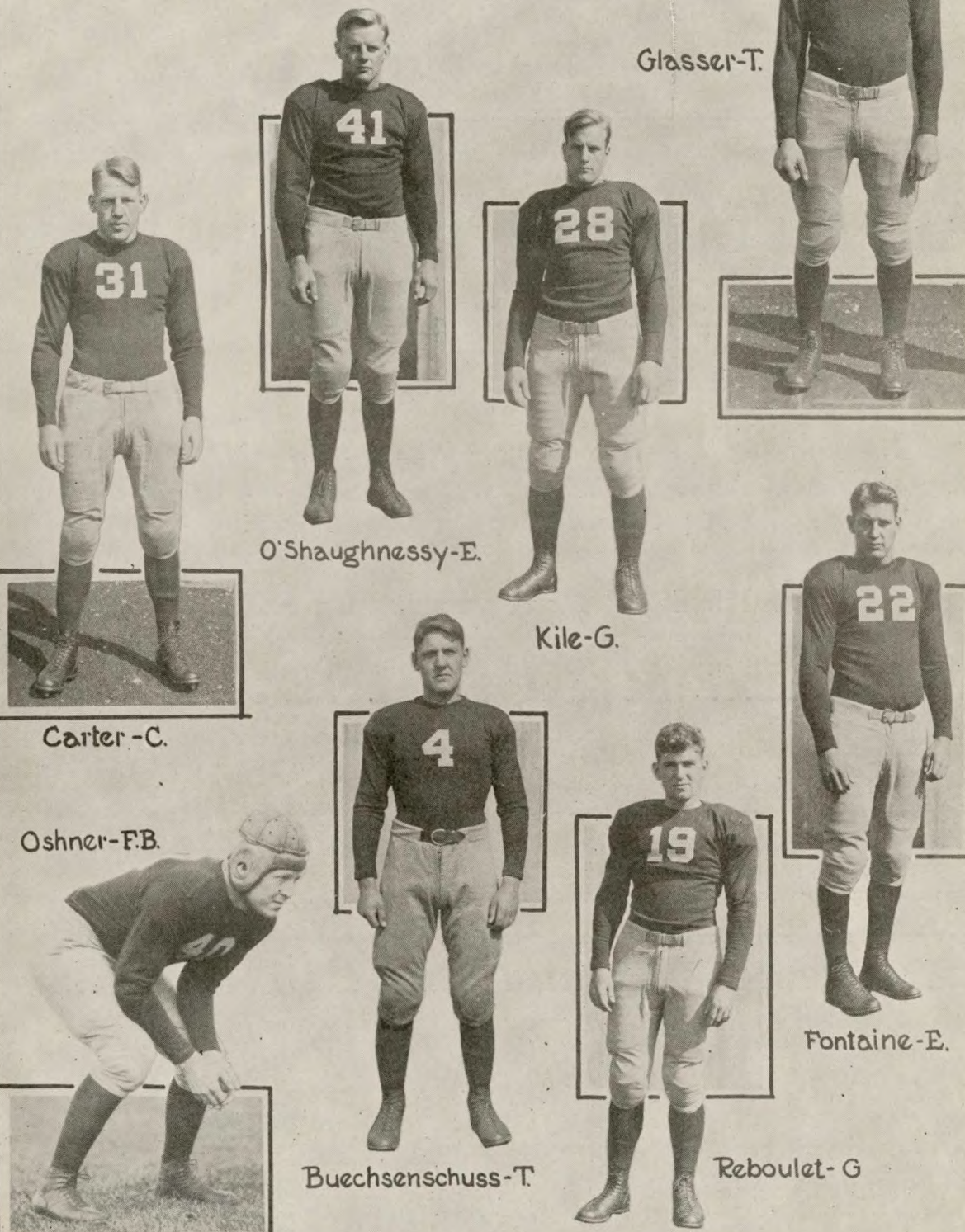
National Columbus Garages, Inc.

46 E. Town Street

ADams 4646

ADams 8929

For Ohio



Glasser-T.

O'Shaughnessy-E.

Kile-G.

Carter-C.

Oshner-F.B.

Buechsenschuss-T.

Reboulet-G

Fontaine-E.

Good Building Materials

THE COLONIAL BUILDING MATERIALS CO.

319 Dublin Avenue

Columbus, Ohio

ADams 6985

ADams 6537

TRY OUR "SUNFIRE DUSTLESS COAL"

After You've Helped the Team Play the Game

HELPED THEM PLAY BY PLAY

Now Standing Up — Now Sitting — With a Series O'hs! Ah's! and Hurrahing! Scoring that Touchdown — Kicking that Goal. The Game Ends and you are Physically and Mentally Tired — Then

HELP YOURSELF TO A GENEROUS SERVING OF
MOORES & ROSS ICE CREAM

There's Nothing So Soothing Or Refreshing

SOLD AT ALL LEADING SODA FOUNTAINS

INDIAN GAS *and* HAVOLINE OILS

We Ask You To Try It and You Be the Judge

STATIONS LOCATED

237 Cleveland Ave.
2561 Sullivant Ave.
427 N. Front St.
2904 W. Broad St.
1047 W. Rich St.
Buttles and Harrison Ave.
McKinley and Central Ave.

4415 N. High St.
Yale and Town St.
Livingston and Wall St.
1390 W. Broad St.
2780 N. High St.
2239 S. High St.

Whittier and Parsons Ave.
2636 Westerville Rd.
1851 S. High St.
Briggsdale, Ohio
Urbancrest, Ohio
3727 Broadway, Grove City
Rome, Ohio

CAPITAL CITY OIL COMPANY

RAN. 4264

164 Yale Avenue

RAN. 4264

The Coaching Staff



E.R. Godfrey

Head Coach-S.S. Willaman

D. Miller

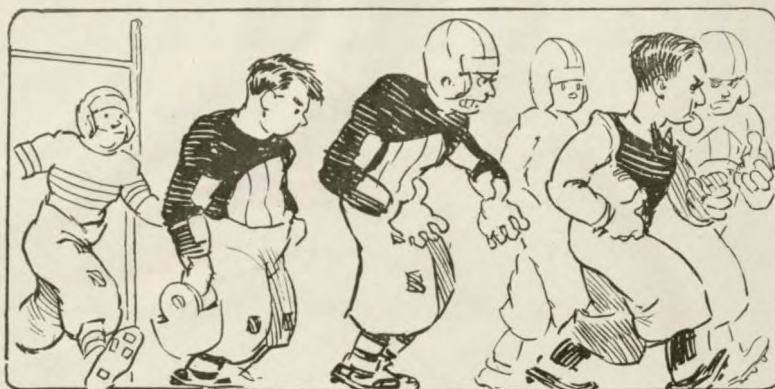
C.T. Surina

C.A. MacDonald

A.J. Oberlander

G.W. Hauser

COMMON PENALTIES



LOSS OF FIVE YARDS

1. Violation of the offside rule, which includes:
 - (a) Lineman or backs illegally in motion when the ball is snapped.
 - (b) Any player of the kicking side ahead of the ball when it is kicked at the kickoff.
 - (c) Interference with opponents before the ball is snapped.
2. Unreasonable delay by a team.
3. Running into the kicker after he has kicked the ball.
4. Failure of substitute to report to referee when entering the game.
5. Unfair play not specifically covered in the rules.
6. Time called more than three times during a half at the request of the captain of the team.
7. Defensive player holding an offensive player.
8. For each incomplete forward pass during the same series of four downs, over the first one. (Only one permitted without penalty.)
9. Crawling by the man in possession of the ball.

LOSS OF 15 YARDS

1. Substitute communicating with players before the ball is put in play.
2. Interference with a man who has signaled for a fair catch.
3. Throwing player to the ground after he has made a fair catch.
4. Offensive player pushing or pulling the man carrying the ball.
5. Offensive player holding a defensive player.
6. Players of the side making a forward pass interfering with defensive players after the ball is passed.
7. Deliberately roughing the kicker after he has kicked the ball.
8. Piling on players who are down.
9. Tackling a man after he has run out of bounds.
10. Offensive player tripping an opponent.
11. Sideline coaching.
12. Intentional throwing of forward pass to the ground.
13. For hurdling.
14. Failure to come to stop in "shift" play.

LOSS OF 25 YARDS

1. Clipping.
2. Delay start of first or third periods.

LOSS OF HALF DISTANCE TO GOAL LINE

1. Return of player to the game who has previously been in that same half.
2. Disqualification of a player for rough play.
3. Any foul occurring inside the opponents' one-yard line or behind goal line.

LOSS OF A DOWN

1. Illegal or incomplete forward pass.
2. Forward pass striking the ground.
3. Forward pass touched by two eligible players of the passing side.
4. Forward pass going out of bounds on the fly.
5. Recovery of blocked kick by kicking side, regardless of which side blocked it.
6. Interference by side making forward pass prior to fourth down.

LOSS OF BALL

1. Ball kicked out of bounds unless touched in the field of play.
2. Illegal use of hands or arms to prevent an opponent from securing loose ball.
3. Forward pass touched by ineligible player of the passer's side.
4. Interference by defensive side under a forward pass.
5. Failure to advance the ball 10 yards in four downs.
6. Kicking at or kicking a loose ball.
7. Player on the kicking side who is ahead of the ball when it is kicked and touches the ball before it touches an opponent.

FORFEITURE OF GAME

Refusal to abide by referee's decision or to play within two minutes after being ordered to do so by the referee.

IMPORTANT NOTE REGARDING TIME OUT

Time is automatically taken out during a try for point after a touchdown, after a safety or a touchback, after fair catch has been made, after an incomplete forward pass, during enforcement of all penalties, when the ball goes out of bounds, or when for any reason play is suspended by the referee. Time shall not begin again, after any of the aforesaid, until the ball is actually passed back from center.