

# Committee on Academic Misconduct (COAM) Annual Report Summer Quarter, 2003 – Spring Quarter, 2004

Prepared by:  
Dr. Phoebe Spinrad, COAM Chairperson, 2003-2004  
Dr. Peter W. Pappas, COAM Coordinator

The University's *Code of Student Conduct* defines academic misconduct as "any activity that tends to compromise the academic integrity of the university, or subvert the educational process" (Faculty Rule 3335-23-04[A]). The Committee on Academic Misconduct (COAM) is charged with maintaining the University's academic integrity by investigating and adjudicating "all reported cases of student academic misconduct, with the exception of cases in a professional college having a published honor code, and [in instances where a student has violated the University's *Code of Student Conduct*] deciding upon suitable disciplinary action" (University Rule 3335-5-487[B]).

COAM is composed of 18 faculty members, seven graduate students (appointed by CGS), and seven undergraduate students (appointed by USG). The work of COAM is facilitated by the Coordinator who (1) receives and processes allegations of academic misconduct, (2) notifies students of allegations of academic misconduct, (3) consults with students and faculty regarding allegations of academic misconduct, (4) schedules hearings to resolve allegations of academic misconduct, and (5) notifies students and faculty of the outcomes of these hearings.

Every student accused of academic misconduct has the right to a hearing before a panel of COAM. A panel consists of at least four members of COAM, and the rules require that each panel have at least two faculty representatives and one student representative. The panel serves as an impartial hearing body that hears evidence and determines (1) if a student has violated the University's *Code of Student Conduct* and (2) an appropriate sanction in cases where a student is found "in violation." If a student agrees with the allegations of academic misconduct and waives his/her right to a hearing, he/she may have the allegations resolved as an administrative decision. For an administrative decision, a member of COAM serves as a hearing officer and determines the sanctions.

## I. SUMMARY OF CASES RESOLVED

During the 2003-2004 academic year, COAM resolved 458 cases of alleged academic misconduct. This represents an increase of 87 cases (23%) over the previous year. Of the cases resolved, 180 (39%) were resolved as administrative decisions and 278 (61%) were resolved as panel hearings (**Table 1**). Females and males represented 39% and 61%, respectively, of the cases resolved (**Table 2**).

**Table 1.**  
**Committee on Academic Misconduct**  
**Summary of Total Cases Resolved and Method of Resolution**  
**2003-2004 Academic Year**

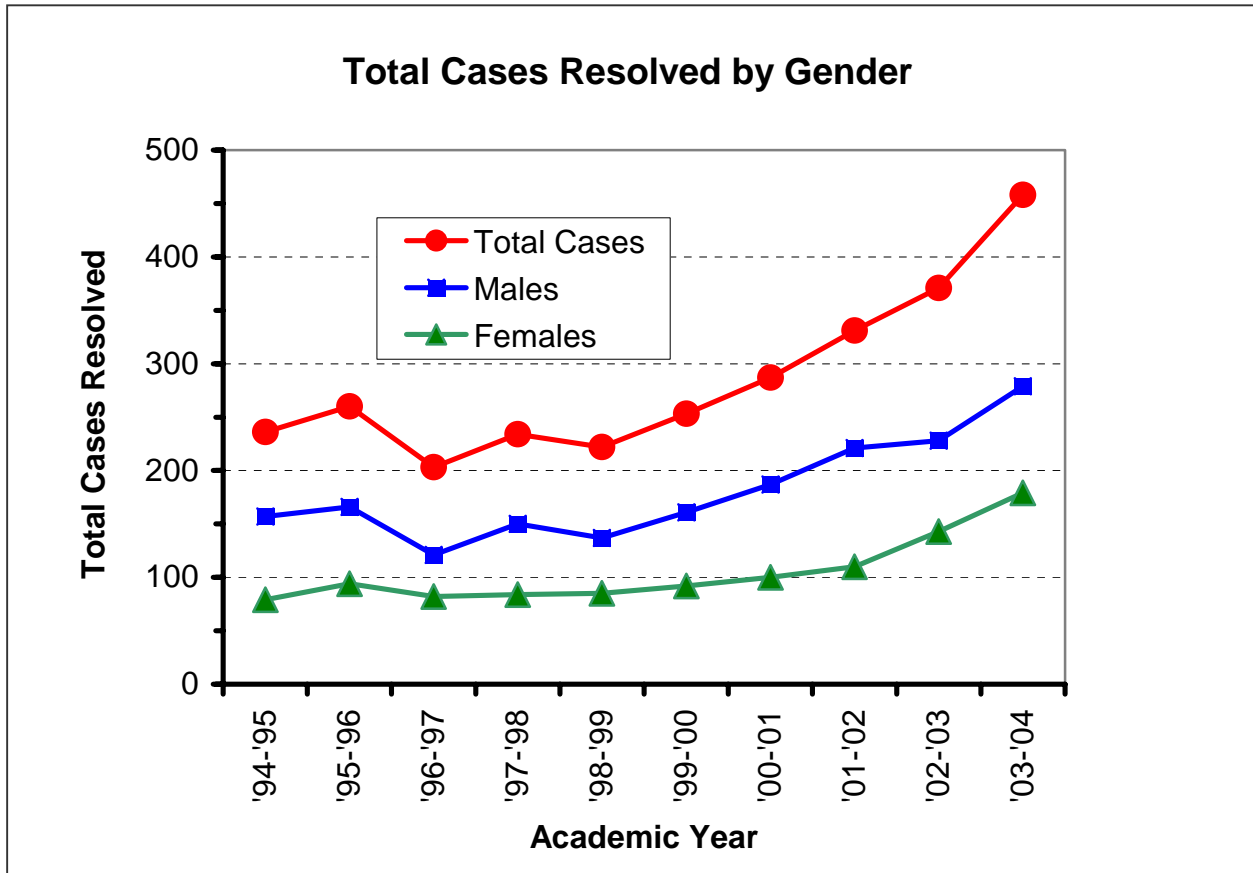
	Number of Cases	% of Total Cases
Administrative Decisions	180	39.3%
Panel Hearings	278	60.7%
<b>Totals</b>	<b>458</b>	<b>100.0%</b>

**Table 2.**  
**Committee on Academic Misconduct**  
**Summary of Total Cases Resolved and Student's Gender**  
**2003-2004 Academic Year**

Gender	Number of Cases	% of Total Cases
Female	179	39.1%
Male	279	60.9%
<b>Totals</b>	<b>458</b>	<b>100.0%</b>

**Figure 1** summarizes the total cases resolved by COAM and the distribution of these cases between males and females for the past ten academic years. During this period, the number of cases resolved by COAM each year has more than doubled. However, the distribution of cases between males and females has not changed dramatically, with males accounting routinely for approximately 60% of the cases resolved by COAM.

**Figure 1.**  
**Committee on Academic Misconduct**  
**Summary of Total Cases Resolved and Student's Gender**  
**Academic Years 1994-1995 through 2003-2004**



Of the 458 cases resolved by COAM this past year, 78 (17%) and 380 (83%) resulted in verdicts of “not in violation” and “in violation,” respectively, and the rates at which males and females were found “in violation” of the *Code of Student Conduct* were approximately equal (**Table 3**).

**Table 3.**  
**Committee on Academic Misconduct**  
**Distribution of Cases Resolved Based on Students' Gender and Verdict**  
**2003-2004 Academic Year**

Gender	Students Found "Not In Violation"	Students Found "In Violation"	Total Cases	% In Violation (% of Total for Gender)
Female	29	150	179	83.8%
Male	49	230	279	82.4%
<b>Totals</b>	<b>78</b>	<b>380</b>	<b>458</b>	<b>83.0%</b>

## II. SUMMARY OF ACADEMIC MISCONDUCT CHARGES

When allegations of academic misconduct arise, a student often does not know or understand what he/she has allegedly done wrong. Since COAM desires that the hearing process to be an educational process, the Coordinator charges the student with violating the *Code of Student Conduct* using terminology that explains the nature of the behavior that lead to the allegations. **Table 4** summarizes information on academic misconduct charges for the 2003-2004 academic year. The left column is a list of the charges used most commonly by COAM. The "Number of Students" column lists the total number of students charged with a particular violation, and the "% of Total" column lists the "Number of Students" as a percentage of the total charges (830). The last two columns list the number of students found "in violation" (Number IV) of each charge and the number of students found "in violation" of each charge as a percentage of the total number of students charged. For example, of 209 students charged with plagiarism, 190 (90.9%) were found "in violation."

Students are often charged with and found "in violation" of more than one charge. Thus, the total number of charges (830) exceeds the total cases resolved by COAM (458), and the total for "Number IV" (540) exceeds the actual number of students found "in violation" (380).

The relatively low values for the percentages of students found "in violation" of collusion and copying are misleading. They result because COAM often treats the charges of "copying" and "collusion" as mutually exclusive. In a majority of the cases where COAM receives information alleging that one student may have copied the work of another student, it's not clear which student (if any) copied and whether or not there was collusion (working together in an unauthorized manner). Thus, in many of these cases,

all of the students involved are charged with copying **and** collusion, but, if found “in violation,” they are found “in violation” of only copying **or** collusion.

**Table 4.**  
**Committee on Academic Misconduct**  
**Summary of Charges for Which Students Were Found**  
**“In Violation” of the University’s Code of Student Conduct**  
**2003-2004 Academic Year**

Charge	Number of Students	% of Total	Number IV	% IV
Plagiarism (submitting plagiarized work in fulfillment of an academic assignment)	209	25.2%	190	90.9%
Copying (attempting to copy) the work of another student in an unauthorized manner and misrepresenting (attempting to misrepresent) it as one's own work	188	22.7%	71	37.8%
Collusion (any instance where two or more students work together and/or share information in a manner that is unauthorized, deceitful, and/or fraudulent)	173	20.8%	81	46.8%
Failure to comply with course/program policies and/or guidelines	136	16.4%	112	82.4%
Submission of work not performed in a course	37	4.5%	31	83.8%
Engaging in activities that place other students at an unfair advantage.	22	2.7%	8	36.4%
Possession and/or use of unauthorized materials during an examination or other course activity	16	1.9%	12	75.0%
Forgery	15	1.8%	14	93.3%
Alteration and resubmission of course materials in an attempt to change the earned credit or grade	13	1.6%	10	76.9%

Charge	Number of Students	% of Total	Number IV	% IV
Requesting and/or receiving unauthorized assistance during an examination, course activity, and/or academic assignment	9	1.1%	8	88.9%
Acting as a substitute ("ringer") for another student during an examination or other course activity	6	0.7%	2	33.3%
Requesting that another student take your place during an examination or other course activity	6	0.7%	1	16.7%
<b>Totals</b>	<b>830</b>	<b>100.0%</b>	<b>540</b>	

### III. SUMMARY OF CASES BASED ON STUDENT'S COLLEGE OF ENROLLMENT AND REFEREEING DEPARTMENT

Over 20 enrollment units on campus were represented by the cases resolved by COAM during the past year (**Table 5**), but three enrollment units (College of Engineering [ENG], Undergraduate Student Academic Services [USAS], and College of Social and Behavioral Sciences [SBS]), when combined, accounted for nearly 50% of all cases.

**Table 5.**  
**Committee on Academic Misconduct**  
**Distribution of Cases Based on Student's Enrollment Unit**  
**2003-2004 Academic Year**

Enrollment Unit	Total for Enrollment Unit	% of All Cases
AHR (School of Architecture)	2	0.4%
AMP (School of Allied Medical Professions)	7	1.5%
ART (College of Art)	4	0.9%
ASC (Colleges of the Arts and Sciences)	8	1.7%

Enrollment Unit	Total for Enrollment Unit	% of All Cases
ATI (Agricultural Technical Institute)	19	4.1%
BIO (College of Biological Sciences)	13	2.8%
BUS (College of Business)	41	9.0%
CED (Continuing Education)	4	0.9%
EDU (College of Education)	10	2.2%
ENG (College of Engineering)	80	17.5%
FAES (College of Food, Agricultural and Environmental Sciences)	14	3.1%
GRD (Graduate School)	34	7.4%
HEC (College of Human Ecology)	46	10.0%
HUM (College of Humanities)	15	3.3%
MPS (College of Mathematical and Physical Sciences)	10	2.2%
NRE (College of Natural Resources)	2	0.4%
NUR (College of Nursing)	5	1.1%
PHR (College of Pharmacy)	2	0.4%
SBS (College of Social and Behavioral Sciences)	66	14.4%
SWK (College of Social Work)	2	0.4%
USAS (Undergraduate Student Academic Services)	74	16.2%
<b>Totals</b>	<b>458</b>	<b>100.0%</b>

The cases heard by COAM during the past year originated from 60 departments across the University (**Table 6**), with the combined cases from Chemistry (9.2% of all cases), History (9.0%), Sociology (6.1%), Computer and Information Science (5.9%), and English (4.8%) accounting for over a third of the total cases.

**Table 6.**  
**Committee on Academic Misconduct**  
**Distribution of Cases Based on Referring Department**  
**2003-2004 Academic Year**

Course (Department)	Number of Cases	% of Total
AED ECON [Agricultural, Environmental, and Developmental Economics]	7	1.5%
AFAM&AST [African American and African Studies]	4	0.9%
ANIM SCI [Animal Sciences]	2	0.4%
ANTHROP [Anthropology]	5	1.1%
ARCH [Architecture]	1	0.2%
ART EDUC [Art Education]	3	0.7%
ASTRON [Astronomy]	1	0.2%
AT TRNG [Athletic Training]	1	0.2%
BIOLOGY	8	1.7%
BUS-FIN [Business Administration: Finance]	4	0.9%
BUS-MGT [Business Administration-Management Sciences]	6	1.3%
BUS-MHR [Business Administration: Management and Human Resources]	1	0.2%
C&R PLAN [City and Regional Planning]	1	0.2%
CHEM [Chemistry]	42	9.2%
CIR TECH [Circulation Technology]	1	0.2%
CIVIL EN [Civil Engineering]	6	1.3%
CLASSICS	1	0.2%
COMP STD [Comparative Studies in the Humanities]	4	0.9%
CPTR/INF [Computer and Information Science]	27	5.9%
ECON [Economics]	4	0.9%
EDU PAES [Education: Physical Activity and Education Services]	6	1.3%



Course (Department)	Number of Cases	% of Total
EDU T&L [Education: Teaching and Learning]	10	2.2%
EEOB [Evolution, Ecology, and Organismal Biology]	2	0.4%
ELEC ENG [Electrical Engineering]	16	3.5%
ENG TECH [Engineering Technology]	15	3.3%
ENGINEER [Engineering]	9	2.0%
ENGLISH	22	4.8%
FD SC&TE [Food Science and Technology]	1	0.2%
FM RES M [Family Resource Management]	18	3.9%
FRENCH	1	0.2%
GEN HUM [General Studies: Humanities]	3	0.7%
GEOG [Geography]	5	1.1%
GERMAN	1	0.2%
HIST ART [History of Art]	3	0.7%
HISTORY	41	9.0%
HUMN NTR [Human Nutrition and Food Management]	1	0.2%
IND ENG [Industrial and Systems Engineering]	13	2.8%
JAPANESE	2	0.4%
JCOM [Journalism and Communication]	10	2.2%
LABBIOSC [Laboratory and Bioscience Technology]	1	0.2%
LINGUIST [Linguistics]	1	0.2%
MATH [Mathematics]	15	3.3%
MECH ENG [Mechanical Engineering]	6	1.3%
MUSIC	2	0.4%
NURSING	2	0.4%
OTHER	12	2.6%
PHARMACY	2	0.4%
PHILOS [Philosophy]	2	0.4%
PHYSICS	11	2.4%
PHYSTHER [Physical Therapy]	1	0.2%

Course (Department)	Number of Cases	% of Total
POLIT SC [Political Science]	11	2.4%
PSYCH [Psychology]	12	2.6%
RUSSIAN	1	0.2%
SOCIOL [Sociology]	28	6.1%
SPANISH	14	3.1%
STAT [Statistics]	3	0.7%
THEATRE	12	2.6%
USAS [Undergraduate Student Academic Services]	2	0.4%
WOM STDS [Women's Studies]	10	2.2%
YIDDISH	2	0.4%
<b>TOTALS</b>	<b>458</b>	<b>100.0%</b>

#### **IV. SUMMARY OF CASES BASED ON STUDENT'S RANK AND COURSE LEVEL**

Nearly 40% of the cases resolved by COAM during the past year were the result of allegations of misconduct in 100-level courses. Progressively fewer cases resulted from allegations in progressively higher-level courses (**Table 7**).

**Table 7.**  
**Committee on Academic Misconduct**  
**Distribution of Cases Based on Course Level (Number)**  
**2003-2004 Academic Year**

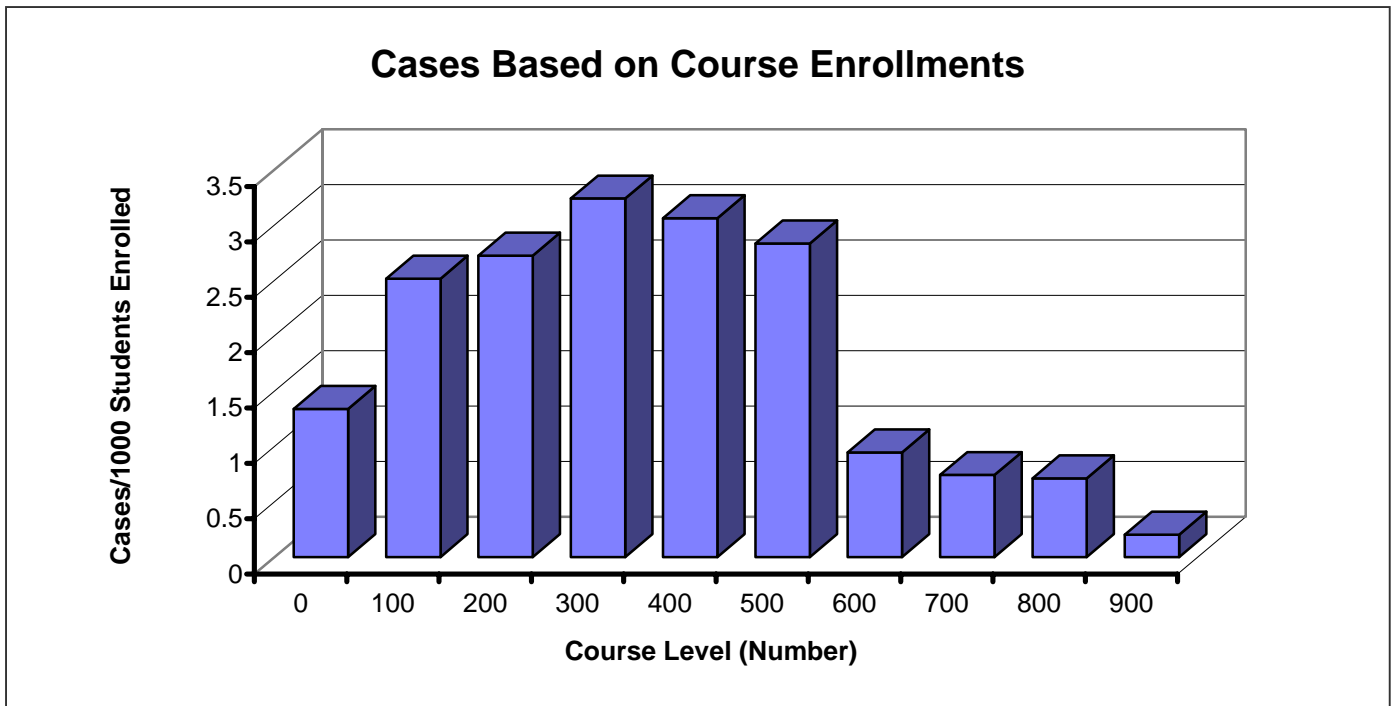
(N/A in the following table refers to those cases in which the alleged academic misconduct did not take place while the student was enrolled in a formal course.)

Course Level	Cases	% of Total
000	2	0.4%
100	180	39.3%
200	82	17.9%
300	50	10.9%
400	33	7.2%
500	57	12.4%
600	22	4.8%
700	13	2.8%
800	7	1.5%
900	1	0.2%
N/A	11	2.4%
<b>Totals</b>	<b>458</b>	<b>100.0%</b>

Although 100-level courses accounted for nearly 40% of the allegations of academic misconduct, the “rate” was actually highest in 300-level courses **(Figure 2)**.

**Figure 2.**  
**Committee on Academic Misconduct**  
**Distribution of Cases Based on Course Level and Enrollment**  
**2003-2004 Academic Year**

(For each course-level, the total number of cases for that level was divided by the total enrollment of all courses for that level, and the resulting number was multiplied by 1000. Enrollment data for Autumn Quarter, 2003, were obtained from the Registrar's Office and used for these calculations.)



**Table 8** summarizes the cases resolved for undergraduate students only (i.e., ranks 1 through 4). The data demonstrate that students in progressively higher class ranks tended to be charged with academic misconduct in progressively higher level courses. For example, almost all cases involving rank 1 students (86 of 93 = 92%) occurred in 100 and 200-level courses, while over half of the cases involving rank 4 students (78 of 131 = 60%) occurred in courses at the 400-level and above.

**Table 8.**  
**Committee on Academic Misconduct**  
**Distribution of Cases Based on Student Rank and Course Level**  
**2003-2004 Academic Year**

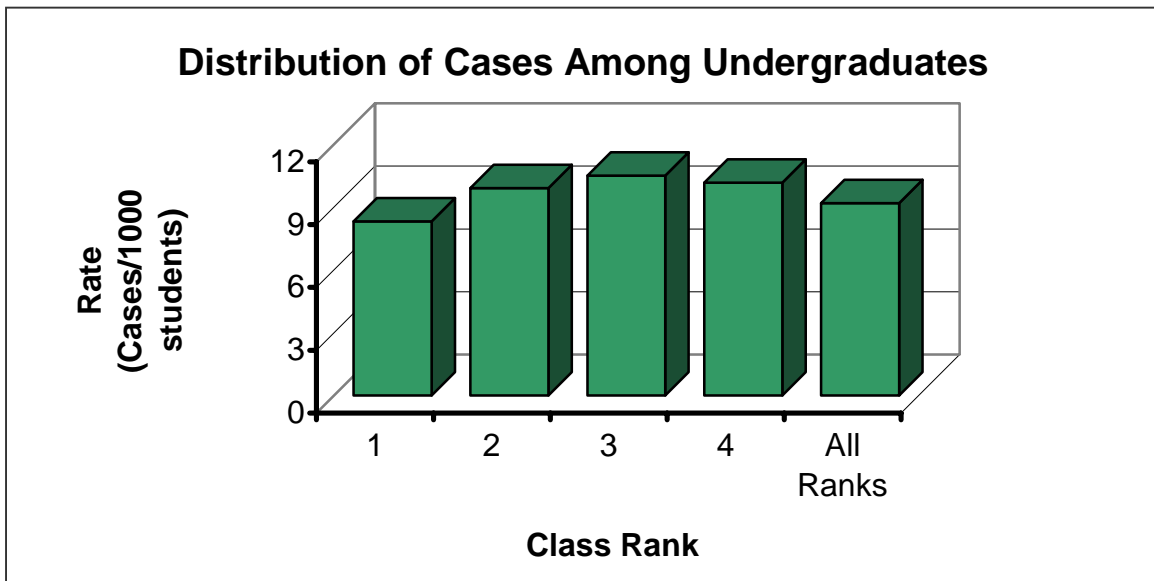
(The following table includes data for only ranks 1, 2, 3, and 4 students who were charged with academic misconduct in a formal course. Thus, the total number of cases is 411.)

Level	Class Rank				Totals
	1	2	3	4	
000	2	0	0	0	2
100	65	56	32	22	175
200	21	24	23	13	81
300	1	11	20	18	50
400	0	1	8	23	32
500	1	2	8	43	54
600	3	0	2	12	17
<b>Totals</b>	<b>93</b>	<b>94</b>	<b>93</b>	<b>131</b>	<b>411</b>

The data in **Table 8** also show that more cases involved rank 4 students (131) than any other rank. However, when these data were calculated as rates (i.e., calculated on the basis of enrollment for each class rank), a somewhat different distribution resulted. As shown in **Figure 3**, the highest rate of cases involved rank 3 students and the lowest rate of cases involved rank 1 students.

**Figure 3.**  
**Committee on Academic Misconduct**  
**Distribution of Cases for Undergraduate Students**  
**Based on Class Rank and Enrollment.**  
**2003-2004 Academic Year.**

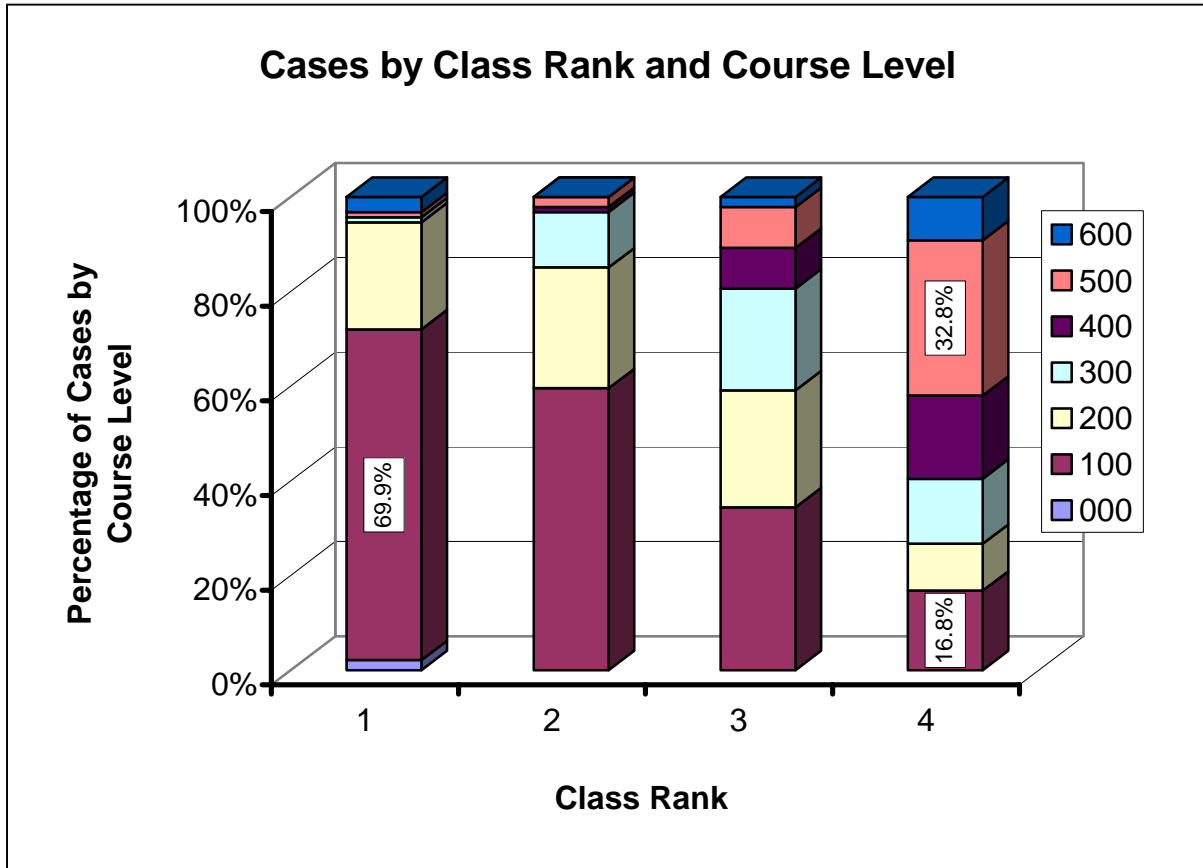
(For this Figure, the number of cases for each rank [see Table 8] was divided by the enrollment for that rank and then multiplied by 1000. The "All Ranks" bar represents the mean value for ranks 1 through 4. Enrollment figures for each rank were obtained from "Highlights of Fifteenth Day Enrollment for the Autumn Quarter, 2003," which was prepared by the Registrar's Office).



**Figure 4** summarizes the distribution of cases among different class ranks and course levels. This figure demonstrates clearly that a majority of allegations involving rank 1 and rank 4 students occurred in 100-level (69.9%) and 500-level (32.8%) courses, respectively. The data also demonstrate that 17% of rank 4 students charged with academic misconduct were charged with academic misconduct in freshman-level (100-level) courses.

**Figure 4.**  
**Distribution of Cases by Course Level and Student's Class Rank**  
**2003-2004 Academic Year**

(For this Figure, the data in **Table 8** for each course level within each class rank were calculated as a percentage of the total cases for that class rank, and the data for the course levels within each class rank were plotted as cumulative percentages.)



## VI. Summary of Disciplinary and Grade Sanctions

When COAM finds that a student has violated the University's *Code of Student Conduct*, COAM imposes sanctions. The sanction always includes a disciplinary component, and, in a majority of cases, the sanction also includes a grade-related component.

The disciplinary sanctions imposed by COAM and the numbers of cases involved are summarized in **Table 9**. As these data demonstrate, most students found in violation of the *Code of Student Conduct* received a sanction of “disciplinary probation.”

**Table 9.**  
**Committee on Academic Misconduct**  
**Summary of Disciplinary Sanctions**  
**2003-2004 Academic Year**

(Of the 458 cases heard during the 2003-2004 Academic Year, 380 resulted in a finding of “In Violation,” and only these resulted in a disciplinary sanction.)

Disciplinary Sanction	Number of Cases	% of Cases
Formal reprimand	12	3.2%
Disciplinary probation (range = 1 quarter to “until graduation”)	337	88.7%
Suspension (range = 1 to 4 quarters)	24	6.3%
Dismissal	7	1.8%
<b>Totals</b>	<b>380</b>	<b>100.0%</b>

The grade sanctions imposed by COAM and the numbers of cases involved are summarized in **Table 10**. As these data demonstrate, most students found “in violation” of the University’s *Code of Student Conduct* fail the course in which the misconduct occurred.



**Table 10.**  
**Committee on Academic Misconduct**  
**Summary of Grade Sanctions**  
**2003-2004 Academic Year**

(Of the 458 cases heard during the 2003-2004 Academic Year, 380 resulted in a finding of "In Violation." No grade sanction was authorized in 35 cases due to the following reasons: a grade sanction was not applicable [i.e., the misconduct did not occur in a formal course, 13 cases], COAM did not authorize a grade sanction [5 cases]; the student withdrew from the course prior to the resolution of the case [17 cases].)

Grade Sanction	Number of Cases	% of Cases
None	35	9.2%
Authorization for a "0" on the assignment	37	9.7%
Authorization for a reduction in the student's final grade by one full letter grade	6	1.6%
Authorization for a "0" on the assignment and then a reduction in the student's final grade by one full letter grade	47	12.4%
Authorization for a final grade of "E" in the course	247	65.0%
Other	8	2.1%
<b>Totals</b>	<b>380</b>	<b>100.0%</b>

As noted above, when a student is found "in violation" of the University's *Code of Student Conduct*, COAM imposes both disciplinary and grade-related sanctions. Thus, by using various combinations of these two sanctions, COAM can impose sanctions that are commensurate with the severity of the academic misconduct. **Table 11** contains a summary of all of the disciplinary and grade-related sanctions imposed by COAM during the previous year.

**Table 11.**  
**Committee on Academic Misconduct**  
**Disciplinary and Grade Sanctions, Combined Summary**  
**2003-2004 Academic Year**

Disciplinary Sanction	Grade Sanction	Rank 1	Rank 2	Rank 3	Rank 4	Rank M	Rank P	Other Ranks	Totals
Formal reprimand	None (no recommendation)	0	0	1	0	0	0	0	1
	None (not applicable)	0	0	0	1	0	0	0	1
	None (student withdrew)	1	0	0	1	0	0	0	2
	"O" on assignment	4	2	0	0	0	0	0	6
	"O" on assignment and a further reduction in the final grade by one full letter grade	2	0	0	0	0	0	0	2
Subtotals		7	2	1	2	0	0	0	12
Disciplinary Probation (1 Quarter)	"O" on assignment	3	0	0	1	0	0	0	4
Subtotals		3	0	0	1	0	0	0	4

Disciplinary Sanction	Grade Sanction	Rank 1	Rank 2	Rank 3	Rank 4	Rank M	Rank P	Other Ranks	Totals
Disciplinary Probation (2 Quarters)	"O" on assignment	3	0	0	0	0	0	0	3
	Reduction in the final grade by one full letter grade	0	0	0	2	0	0	0	2
	"O" on assignment and a further reduction in the final grade by one full letter grade	2	3	0	0	0	0	0	5
	"E" in course	3	2	0	0	0	0	0	5
Subtotals		8	5	0	2	0	0	0	15
Disciplinary Probation (3 Quarters)	None (no recommendation)	1	0	0	0	0	0	0	1
	None (not applicable)	0	0	0	0	0	1	0	1
	"O" on assignment	1	0	1	0	0	0	1	3
	Reduction in the final grade by one full letter grade	2	1	0	0	0	0	0	3
	"O" on assignment and a further reduction in the final grade by one full letter grade	10	10	3	0	0	0	1	24

Disciplinary Sanction	Grade Sanction	Rank 1	Rank 2	Rank 3	Rank 4	Rank M	Rank P	Other Ranks	Totals
	"E" in course	14	20	6	5	0	0	2	47
Subtotals		28	31	10	5	0	1	4	79
Disciplinary Probation (4 Quarters)	None (not applicable)	1	0	0	0	0	0	0	1
	None (student withdrew)	3	2	0	0	0	0	0	5
	"0" on assignment	0	0	3	2	0	0	1	6
	"0" on assignment and a further reduction in the final grade by one full letter grade	5	2	4	1	0	0	1	13
	"D" in course	0	1	0	0	0	0	0	1
	"E" in course	23	30	34	1	0	0	0	88
Subtotals		32	35	41	4	0	0	2	114
Disciplinary Probation (6 Quarters)	None (student withdrew)	0	1	0	0	0	0	0	1
Subtotals		0	1	0	0	0	0	0	1
Disciplinary Probation (until graduation)	None (no recommendation)	0	0	1	1	0	1	0	3

Disciplinary Sanction	Grade Sanction	Rank 1	Rank 2	Rank 3	Rank 4	Rank M	Rank P	Other Ranks	Totals
	None (not applicable)	0	0	1	0	0	2	0	3
	None (student withdrew)	0	2	1	4	0	0	0	7
	"0" on assignment	0	0	0	11	5	0	0	16
	Reduction in the final grade by one full letter grade	0	1	0	0	0	0	0	1
	"0" on assignment and a further reduction in the final grade by one full letter grade	0	0	1	2	0	0	0	3
	"C-" in course	0	0	1	1	0	0	0	2
	"D" in course	0	0	0	5	0	0	0	5
	"E" in course	1	1	15	54	7	4	2	84
Subtotals									
		1	4	20	78	12	7	2	124
Suspension (1 Quarter)									
	None (not applicable)	0	0	0	0	0	0	1	1
	"E" in the course	1	0	0	0	1	0	1	3
Subtotals									
		1	0	0	0	1	0	2	4
Suspension (2 Quarters)									
	None (not applicable)	1	0	0	0	0	0	1	2

Disciplinary Sanction	Grade Sanction	Rank 1	Rank 2	Rank 3	Rank 4	Rank M	Rank P	Other Ranks	Totals
	"E" in the course	0	4	2	5	0	0	0	11
Subtotals									
		1	4	2	5	0	0	1	13
Suspension (3 Quarters)									
	None (not applicable)	0	0	0	0	1	0	0	1
	None (student withdrew)	0	0	1	0	0	0	0	1
	"E" in the course	0	0	1	0	1	1	0	3
Subtotals									
		0	0	2	0	2	1	0	5
Suspension (4 Quarters)									
	None (student withdrew)	0	0	0	1	0	0	0	1
	"E" in the course	1	0	0	0	0	0	0	1
Subtotals									
		1	0	0	1	0	0	0	2
Dismissal									
	"E" in the course	0	0	0	3	0	0	1	4
	None (not applicable)	0	2	0	0	0	0	1	3
Subtotals									
		0	2	0	3	0	0	2	7

<b>Disciplinary Sanction</b>	<b>Grade Sanction</b>	<b>Rank 1</b>	<b>Rank 2</b>	<b>Rank 3</b>	<b>Rank 4</b>	<b>Rank M</b>	<b>Rank P</b>	<b>Other Ranks</b>	<b>Totals</b>
Total "In Violation"		82	84	76	101	15	9	13	380
Total "Not in Violation"		11	12	18	31	3	3	0	78
Total Cases		93	96	94	132	18	12	13	458