

A NEW SPECIES OF APHRICUS FROM CALIFORNIA
(COLEOPTERA: ELATERIDAE)

JOSEF N. KNULL

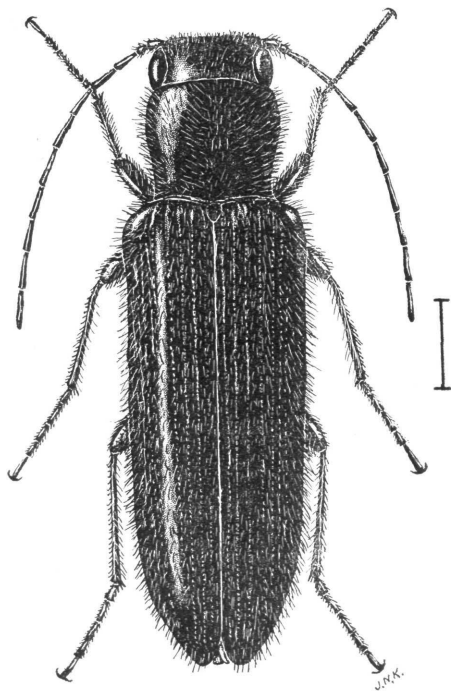
Department of Zoology and Entomology, The Ohio State University, Columbus 10

Aphricus lanei n. sp.

Male.—Narrow, elongate; dark brown, almost black; legs, antennae and mouth parts lighter; body and legs densely pubescent.

Head convex on vertex, front concave; surface densely finely punctured giving a rugose appearance; mandibles prominent; labrum connate with clypeus and in same plane; supra-antennal margin of frons continuous above labrum, finely carinate; antennae long, slender, reaching to about middle of elytra, ratio of lengths of segments 1 to 11, 8:4:6:10:11:12:12:14:13:14.

Pronotum longer than wide, widest near middle; sides converging posteriorly, sinuate near base, hind angles acute, somewhat divergent, with fine carina on side; disk convex, finely, densely punctured. Scutellum prominent, densely pubescent.



Aphricus lanei n. sp.
(Line equals 1 mm.)

Elytra at base wider than widest part of head or pronotum; sides subparallel near base then gradually converging to acutely rounded apices; surface with punctures of striae separated by less than their own diameters, punctures larger than those of pronotum, interspaces minutely punctured, pubescence dense.

Beneath with metasternum truncate anteriorly, mesocoxae separated, meso- and meta-thoracic suture distinct between mesocoxae, which are enclosed by meso- and metasternum; prothoracic sternopleural sutures not converging posteriorly. Legs slender, apex of each tibia with two spines.

Length 6.8 mm.; width 1.8 mm.

Holotype male and paratypes all collected in Lucerne Valley, San Bernardino Co., Calif. June 5, 1948 by D. J. and J. N. Knull. Holotype and paratypes in collection of author, paratypes in collection of M. C. Lane and The Ohio State University.

This species differs from *A. californicus* Lec. by being somewhat larger, darker in color and more pubescent. It lacks the apical carina on the fifth elytral interspace of *californicus*.

I take pleasure in naming this species for M. C. Lane, who has aided me greatly in my studies of the Elateridae.