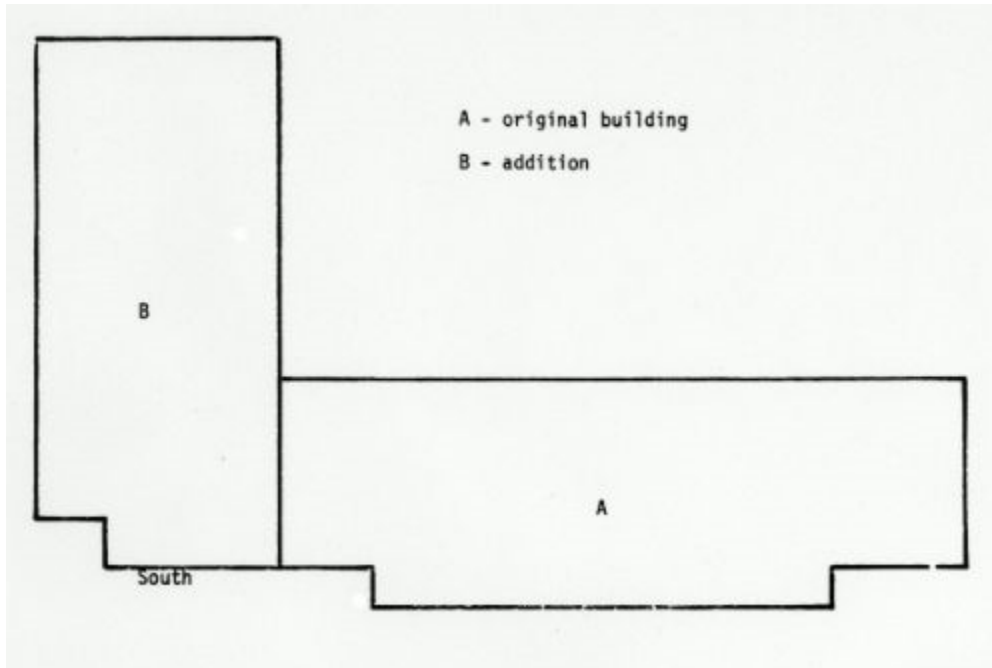




Enlarged once. See sketch



3.4 Present area of building as shown in inventory records of Division of Campus Planning:

44,926 sq. ft. gross; 29,920 sq. ft. net assignable

See Addendum No. 1

3.5 Volume of building:

601,390 cu. ft. (PP)

## B. PLANNING & CONSTRUCTION - ORIGINAL BUILDING

1. On June 10, 1949 the Board of Trustees approved the plans and related documents prepared by Sims, Cornelius and Schooley and authorized the solicitation of bids by contractors.
2. Bids were received on August 30, 1949 (A).
3. On September 7, 1949 the Board of Trustees awarded contracts to the following contractors:
  - General: Huber, Hunt and Nichols, Inc.
  - Electrical: Electrical Contractors, Inc.
  - Heating: Huffman-Wolfe Co.
  - Plumbing: National Co., Inc.
4. Completion and occupancy:
  - 4.1 The general contract was "substantially complete" on February 1, 1951 (A).
  - 4.2 Dedicated June 10, 1951 (R50-51:6)

## C. PLANNING & CONSTRUCTION - ADDITION

1. On April 10, 1959 the Board of Trustees approved the plans and related documents prepared by Potter, Tyler, Martin and Roth and authorized the solicitation of bids by contractors.
2. Bids were received on May 26, 1959 (A).
3. On June 5, 1959 the Board of Trustees awarded contracts to the following contractors:
  - General: J.I. Barnes Co.
  - Electrical: Electric Power Equipment Co.
  - Heating and ventilating: Piping Contractors Co.
  - Plumbing: Piping Contractors Co.
4. Completion and occupancy:
  - 4.1 Except for 5 rooms, this building was released for occupancy on December 29, 1960 (P).
  - 4.2 Records of the University Architect show all contracts completed December 30, 1960.

#### D. PHOTOGRAPHS

1. In Photoarchives:
  1. In Photoarchives:
    - X 7794
    - XX 7795
  2. Addition:
    - X 7947
    - X 7948

#### ADDENDUM NO. 1

Name changed to "Glenn Ansel Fry Hall" by Board of Trustees on November 4, 1983.

Campus Planning records now show the net assignable area of this building as 29,809 square feet.

John H. Herrick  
November 7, 1984