

A NEW SPECIES OF ISSIDAE FROM CALIFORNIA
(HOMOPTERA: FULGOROIDEA)

JOHN S. CALDWELL,
Circleville, Ohio,

AND

DWIGHT M. DeLONG,
The Ohio State University

In the collection and study of the Homoptera occurring on grape in California two species of Fulgoroidea have been taken by Dr. Severin. One of these belonging to the genus *Hysteropterum* is apparently new and is being named in honor of Dr. Severin. He has furnished also the food plant data and collecting dates.

***Hysteropterum severini* n. sp.**

Resembling *aurorum* (Uhler) but with flatter frons, longer elytra, and different male genitalia as noted in the description. Length, male, 4.5 mm.; female, 5.3 mm.

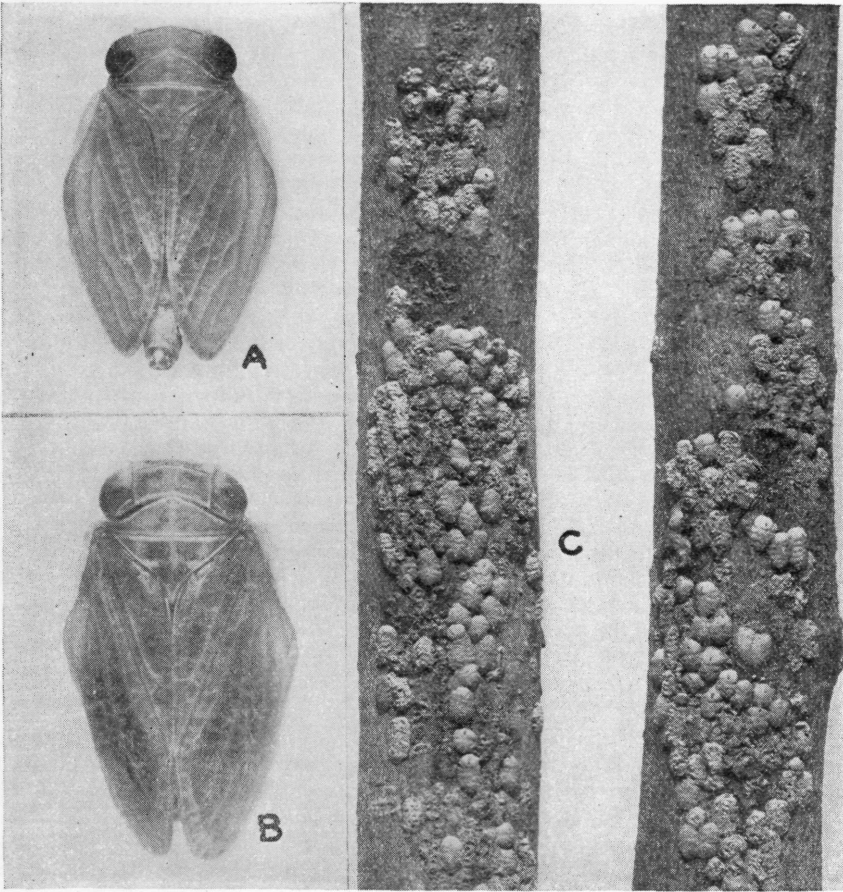
General color yellow to yellow-orange. Frons darkened between carinae. Elytra in female tending toward fuscous. Costal margin in both sexes broadly white.

Vertex three times as broad as long, quadrate, sharply carinate cephalad. Frons flat, without intermediate carinae. Clypeus scarcely protruding into frons. Elytra broadly bullate, longer than in *aurorum* (Uhler).

Anal segment of male bifid apically with lateral flaps projecting ventrad. Claspers with apical spur extremely elongate; heel narrow, half as long as apical spur. Aedeagus without apical spurs; ventral processes long, curved toward base of aedeagus with the extreme apices hooked dorsad.

Male holotype, female allotype, and paratypes of both sexes from Geyserville, Sonoma Co., California, collected on July 2, 1946, on California mugwort, *Artemisia vulgaris*, and on *Brickellia californica*. Paratypes were also common on olive trees and on coyote brush or chaparral, *Baccharis pilularis*, July 2, 17 and 25, 1946, near Cloverdale, California, collected by H. H. P. Severin.

Dr. Severin also reports that egg masses were abundant on the trunks and branches of olive trees, occasionally on apple, plum, Oregon oak trees, *Quercus garryana*, and the poison oak, *Rhus diversiloba*, and on grapevines.



A—male, *H. severini* n. sp.; B—female specimen, same; C—eggs of same on branches of olive trees.

All photography by H. H. P. Severin.