

# Agricultural Administration

Herrick Archives Number 003

## A. IDENTIFICATION & LOCATION

### 1. Name

1.1 Never officially named by Board of Trustees action.

1.2 Alternate names noted:

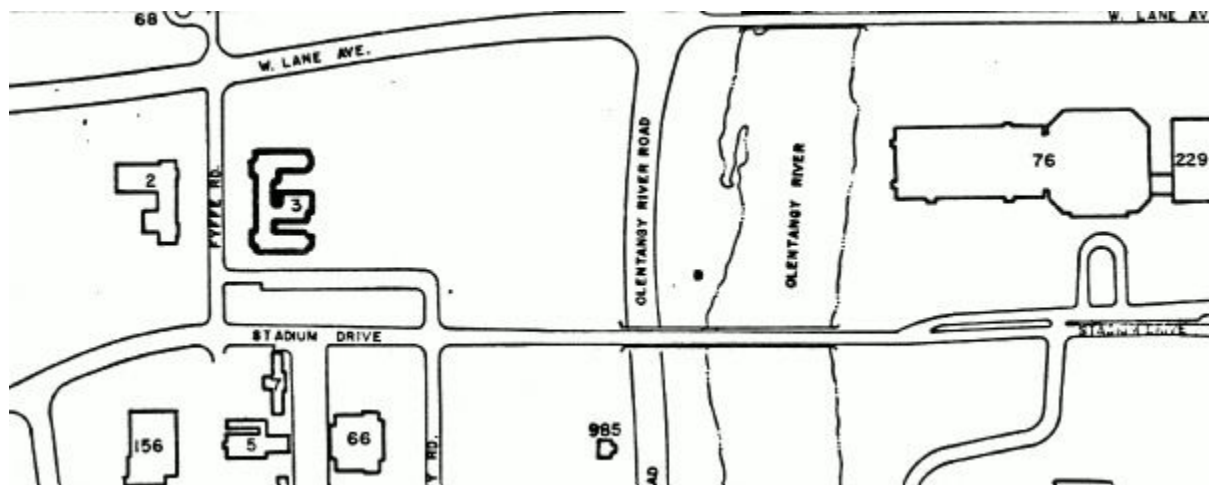
Agricultural Administration and Classroom Building  
Agriculture--Classroom--Administration Building  
Office and Classroom Building for College of Agriculture  
Addition built as "College of Agriculture-Addition to Building"

See Addendum No. 1,2

### 2. Location

2.1 Located at 2120 Fyffe Road. See map below.

2.2 For greater detail, see Sheet 67 in the book of campus maps in the University Archives.



For identification of other buildings shown, see Appendix A.

### 3. General Description

3.1 Type of construction:

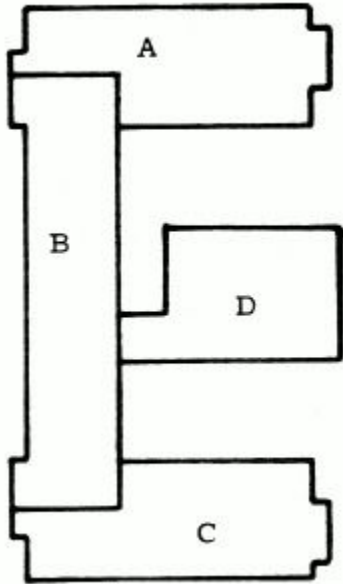
Reinforced concrete frame with brick exterior.

3.2 No. of stories:

Basement (mostly unexcavated) and four stories.

3.3 Increments of construction:

Enlarged once. See sketch.



**Original Building:** Basement,  
ground floor,  
and 1st floor  
of A and C;  
all of B

**Addition:** 2nd floor of A & C;  
all of D

3.4 Present area of building as shown in inventory records of Division of Campus Planning:

101, 313 sq. ft. gross;  
59,416 sq. ft. net assignable

3. 5 Volume of Building:

1,138,920 cubic feet (PP).

See Addendum No. 3.

## B. PLANNING & CONSTRUCTION--ORIGINAL BUILDING

1. On January 10, 1955 the Board of Trustees approved the plans and related documents prepared by Garfield, Harris, Robinson and Schafer and authorized the solicitation of bids by contractors.

2. Bids were received on February 15, 1955 (T)

3. On March 14, 1955 the Board of Trustees awarded contracts to the following contractors:

General: Robert W. Setterlin & Sons Co.

Electrical: Gustav Hirsch Organization

Heating, ventilating, & air conditioning: The National Co., Inc.

Plumbing: Huffman-Wolfe Co.

4. Completion and occupancy:

The plumbing contract was substantially completed September 5, 1956; the other three contracts December 1, 1956 (A). The College offices and library moved in during early December 1956 (L

12/10/56).

### C. PLANNING & CONSTRUCTION--ADDITION

1. On March 11, 1957 the Board of Trustees approved the plans and related documents prepared by Garfield, Harris, Robinson and Schafer and authorized the solicitation of bids by contractors.

2. Bids were received on May 3, 1957 (T).

3. On May 13, 1957 the Board of Trustees awarded contracts to the following contractors:

General: ,George W. Timmons

Electrical: Gustav Hirsch Organization

Heating & ventilating: Conditioned Air, Inc.

Plumbing: Limbach Co.

4. The site improvement contracts for this addition were awarded by Board of Trustees action on September 1, 1958 to the following contractors:

General: Trimmer Construction Co.

Electrical: Haines Electric Co.

5. Completion and occupancy:

The electrical, heating and ventilating, and general contracts were substantially completed on July 25, 1958; the date of substantial completion of the plumbing contract is not recorded, but the final estimate is dated July 30, 1958. (A)

### D. COST

Carried at \$1,984,348.35 in Business Office reports. (Note: Incorrectly listed in 1970-71 report as "Agricultural Engineering Building. ")

### E. PHOTOGRAPHS

1. In Photoarchives:

X 7601--front (west) elevation

X 7602--rear (east) elevation

John H. Herrick

August 24, 1972

### ADDENDUM NO. 1

Inspection of old campus maps reveals the following additional names for this building:

Agriculture Building

Ag Lab Building

John H. Herrick

November 12, 1979

## ADDENDUM NO. 2

The following additional name for this building has been found on old campus maps:

Agriculture Administration

John H. Herrick

September 21, 1981

## ADDENDUM NO. 3

Campus Planning records now show the following areas for this building:

101,478 sq. ft. gross

58,157 sq. ft. net assignable

John H. Herrick

November 7, 1984